



## PUBLIC NOTICE

### of Intent to Lease Multiple Parcels of University of Alaska Land

The University of Alaska Land Management Office (UALM) is seeking public comment on the attached disposal plan to lease land. Parcels will be leased at or above fair market value.

Parties interested in commenting on this proposed disposal plan must submit written comments to UALM by fax at (907) 786-7733, by email at [ua-land@alaska.edu](mailto:ua-land@alaska.edu), or at the address listed below no later than **5:00 P.M. on March 2, 2026**, to be considered.

---

Anchorage Office  
1835 Bragaw St. Ste. 490  
Anchorage, Alaska 99508

UNIVERSITY OF ALASKA  
Land Management

[www.alaska.edu/ualand](http://www.alaska.edu/ualand)  
[ua-land@alaska.edu](mailto:ua-land@alaska.edu)

Fairbanks Office  
2025 Yukon Dr. Ste. 207  
Fairbanks, Alaska 99775



## DISPOSAL PLAN

### Intent to Lease Multiple Parcels of University of Alaska Land

The University of Alaska ("University") intends to offer several parcels of land for lease at or above fair market value. The parcels are located in Southcentral Alaska near Point MacKenzie, Alaska.

This disposal plan is effective as long as the University owns the parcels.

#### PARCEL INFORMATION

<u>PARCEL #</u>	<u>LOCATION</u>	<u>MTRS &amp; LEGAL DESCRIPTION</u>	<u>ACRES</u>
<b>MS.PM.0001</b>	<b>Point MacKenzie, Alaska</b>	Township 14 North, Range 4 West, Seward Meridian, Alaska  Section 13: SWNW, Lots 2 and 3  According to the GLO Survey Plat approved by the U.S. Surveyor Generals Office in Juneau, Alaska on April 16, 1918	<b>369.34</b>
<b><u>DESCRIPTION:</u></b>		This parcel is located directly north of the intersection of West Point MacKenzie Road and the Jeep Trail.	
<b>MS.PM.0002</b>	<b>Point MacKenzie, Alaska</b>	Township 14 North, Range 4 West, Seward Meridian, Alaska  Section 14: S2NE, SWNW, SE, NWSW  According to the GLO Survey Plat approved by the U.S. Surveyor Generals Office in Juneau, Alaska on April 16, 1918	<b>80.00</b>
<b><u>DESCRIPTION:</u></b>		This parcel is located directly north of Lake Lorraine and adjacent to MS.PM.0001.	

UNIVERSITY OF ALASKA  
Land Management

Anchorage Office  
1835 Bragaw St. Ste. 490  
Anchorage, Alaska 99508

[www.alaska.edu/ualand](http://www.alaska.edu/ualand)  
[ua-land@alaska.edu](mailto:ua-land@alaska.edu)

Fairbanks Office  
2025 Yukon Dr. Ste. 207  
Fairbanks, Alaska 99775

<b>MS.PM.0003</b>	<b>Point MacKenzie, Alaska</b>	<p>Township 14 North, Range 4 West, Seward Meridian, Alaska</p> <p>Section 23: S2NWSE, SWSE</p> <p>According to the GLO Survey Plat approved by the U.S. Surveyor Generals Office in Juneau, Alaska on April 16, 1918</p>	<b>60.00</b>
<b><u>DESCRIPTION:</u></b>		This parcel is located directly west of the intersection of West Point MacKenzie Road and the Jeep Trail on the southern side of West Point MacKenzie Road.	
<b>MS.PM.0004</b>	<b>Point MacKenzie, Alaska</b>	<p>Township 14 North, Range 4 West, Seward Meridian, Alaska</p> <p>Section 26: W2</p> <p>According to the GLO Survey Plat approved by the U.S. Surveyor Generals Office in Juneau, Alaska on April 16, 1918</p>	<b>320.00</b>
<b><u>DESCRIPTION:</u></b>		This parcel is located west of Port MacKenzie just north of the Jeep Trail.	

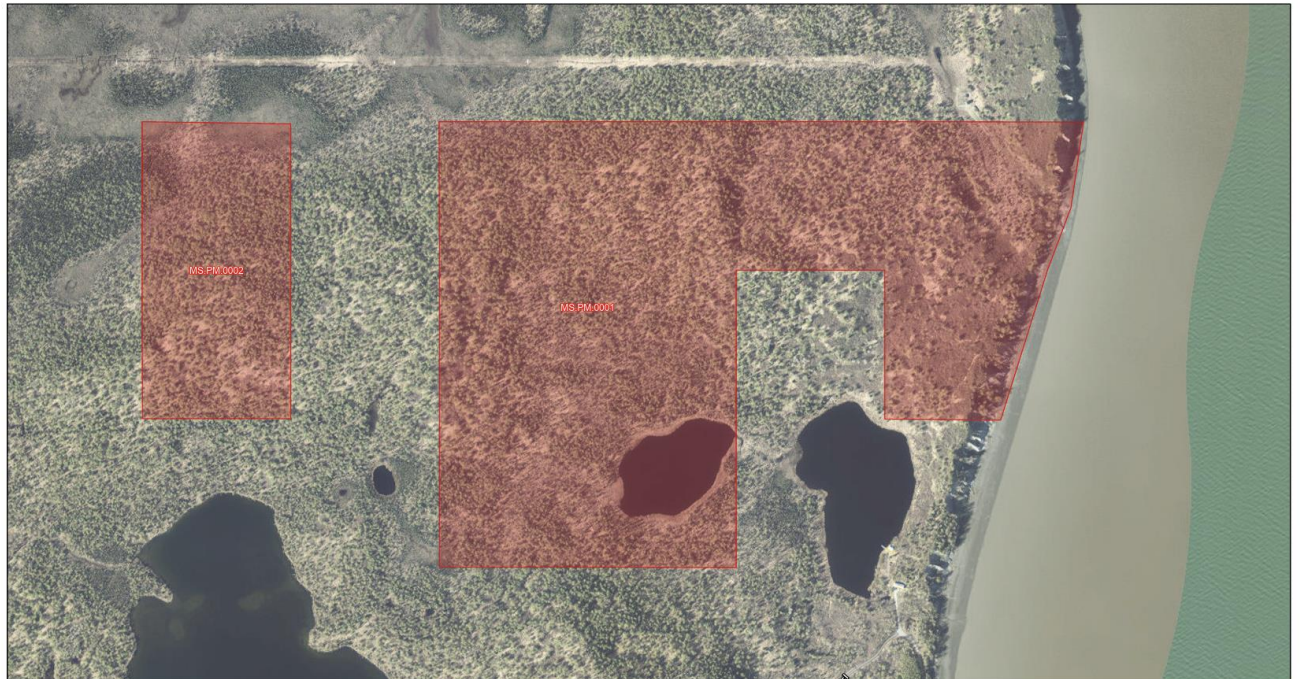
Anchorage Office  
1835 Bragaw St. Ste. 490  
Anchorage, Alaska 99508

UNIVERSITY OF ALASKA  
Land Management

[www.alaska.edu/ualand](http://www.alaska.edu/ualand)  
[ua-land@alaska.edu](mailto:ua-land@alaska.edu)

Fairbanks Office  
2025 Yukon Dr. Ste. 207  
Fairbanks, Alaska 99775

## Map of UALM Parcels MS.PM.0001 & MS.PM.0002



12/2/2025, 3:05:42 PM

UA Parcels

Investment

1:18,056  
0 0.1 0.2 0.4 mi  
0 0.17 0.35 0.7 km

Microsoft, Vantor, Sources: Esri, TomTom, Garmin, FAO, NOAA, USGS, © OpenStreetMap contributors, and the GIS User Community

University of Alaska Land Management  
Microsoft, Vantor | Bureau of Land Management (BLM), Alaska | Kenai Peninsula Borough, Matanuska-Susitna Borough GIS, Municipality of Anchorage, State of Alaska, © OpenStreetMap, Microsoft, Esri, TomTom, Garmin, SafeGraph, MET/NASA, USGS, EPA, NPS, US Census Bureau, USDA, USFWS |

UNIVERSITY OF ALASKA  
Land Management

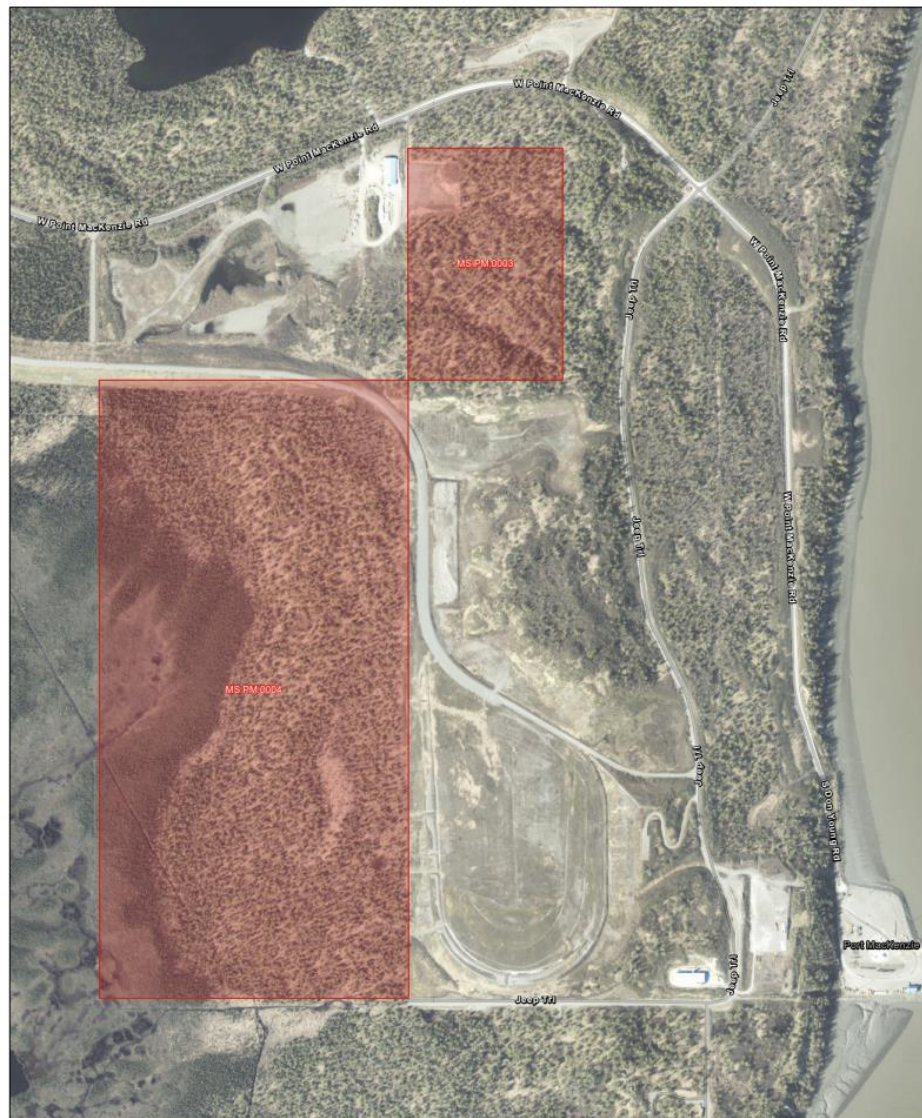
Anchorage Office  
1835 Bragaw St. Ste. 490  
Anchorage, Alaska 99508

[www.alaska.edu/ualand](http://www.alaska.edu/ualand)  
[ua-land@alaska.edu](mailto:ua-land@alaska.edu)

Fairbanks Office  
2025 Yukon Dr. Ste. 207  
Fairbanks, Alaska 99775



## Map of UALM Parcels MS.PM.0003 & MS.PM.0004



12/2/2025, 3:07:47 PM

UA Parcels

Investment

1:18,056

0 0.1 0.2 0.4 mi  
0 0.15 0.3 0.6 km

Microsoft, Vantor, Sources: Esri, TomTom, Garmin, FAO, NOAA, USGS, © OpenStreetMap contributors, and the GIS User Community

University of Alaska Land Management  
Microsoft, Vantor | Bureau of Land Management (BLM), Alaska | Kenai Peninsula Borough, Matanuska-Susitna Borough GIS, Municipality of Anchorage, State of Alaska, © OpenStreetMap, Microsoft, Esri, TomTom,

UNIVERSITY OF ALASKA  
Land Management

Anchorage Office  
1835 Bragaw St. Ste. 490  
Anchorage, Alaska 99508

[www.alaska.edu/ualand](http://www.alaska.edu/ualand)  
[ua-land@alaska.edu](mailto:ua-land@alaska.edu)

Fairbanks Office  
2025 Yukon Dr. Ste. 207  
Fairbanks, Alaska 99775