



PUBLIC NOTICE

Natural Gas Line Construction Temporary Construction Permit Parks Highway, Alaska

The University of Alaska Land Management Office (UALM) is seeking public comment on the attached disposal plan to issue a temporary construction permit impacting University of Alaska lands.

Parties interested in commenting on this disposal plan must submit written comments to UALM by fax at (907)786-7733, by email at ua-land@alaska.edu, or at the address listed below by no later than **5:00 P.M. on Thursday, March 12, 2026**, to be considered.

UNIVERSITY OF ALASKA
Land Management

Anchorage Office
1835 Bragaw St., Ste. 490
Anchorage, Alaska 99508

www.alaska.edu/ualand
ua-land@alaska.edu

Fairbanks Office
2025 Yukon Dr., Ste. 207
Fairbanks, Alaska 99775



DISPOSAL PLAN

Natural Gas Line Construction Temporary Construction Permit Parks Highway, Alaska

**Township 10 South, Range 8 West, Section 33, Fairbanks Meridian
Nenana Recording District
Township 24 North, Range 4 West, Section 18, Seward Meridian
Talkeetna Recording District**

The University of Alaska ("University") intends to issue a temporary construction permit authorizing new construction activity for the installation of a liquified natural gas line and related equipment north of Healy, and south of Talkeetna, Alaska. Both locations are adjacent to the Parks Highway. The permit term is through December 31, 2028.

This disposal plan is effective as long as the University owns the parcels.

PARCEL INFORMATION

<u>PARCEL #</u>	<u>LOCATION</u>	<u>LEGAL DESCRIPTION</u>	<u>ACRES & SIZE</u>
NE.FR.0004	Ferry, Alaska	A portion of the W2E2 and W2 of Sec. 33, T10S, R8W, F.M., according to the GLO survey plat of Township No. 10 South, Range No. 8 West, of the Fairbanks Meridian, Alaska, approved by the U.S Surveyor General's Office in Juneau, Alaska on January 18, 1919.	15*
US.SN.0003	Talkeetna, Alaska	A portion of Lot 14 and the E2W2SW4 of Sec. 18, T24N, R4W, S.M., according to the BLM survey plat of Township 24 North, Range 4 West, of the Seward Meridian, Alaska, Supplemental Plat accepted by the United State Department of the Interior, Bureau of Land Management in Washington, D.C., on June 6, 1955.	5*

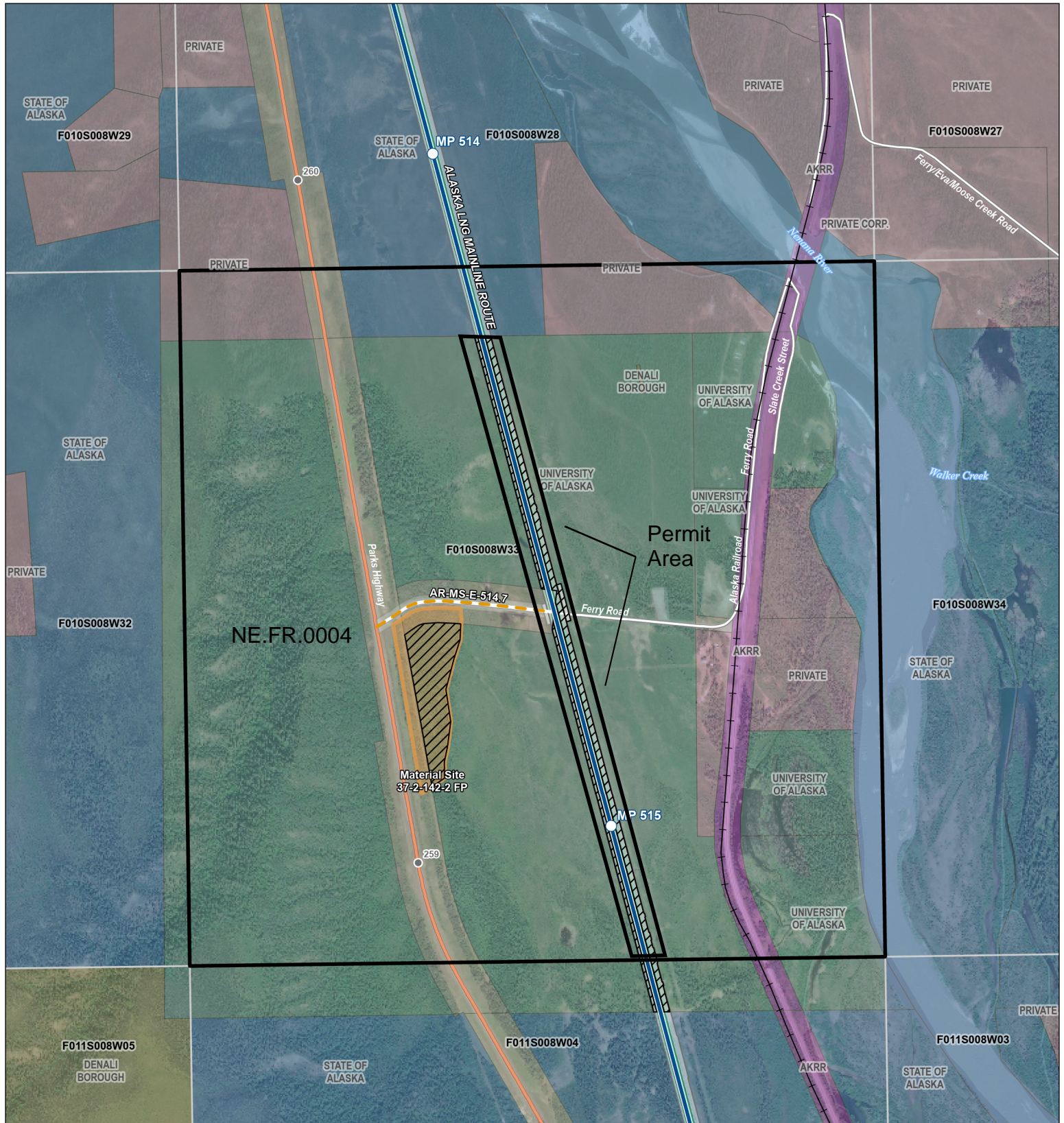
***approximate**

UNIVERSITY OF ALASKA
Land Management

Anchorage Office
1835 Bragaw St., Ste. 490
Anchorage, Alaska 99508

www.alaska.edu/ualand
ua-land@alaska.edu

Fairbanks Office
2025 Yukon Dr., Ste. 207
Fairbanks, Alaska 99775



Alaska LNG Project

University of Alaska - F010S008W33

PROJECT FEATURES

- Alaska LNG Project on University of Alaska Land
- Alaska LNG Mainline Milepost
- Alaska LNG Mainline Route
- Gravel Access Road
- Operations ROW
- Construction ROW
- Add. Temp. Work Space

EXISTING FEATURES

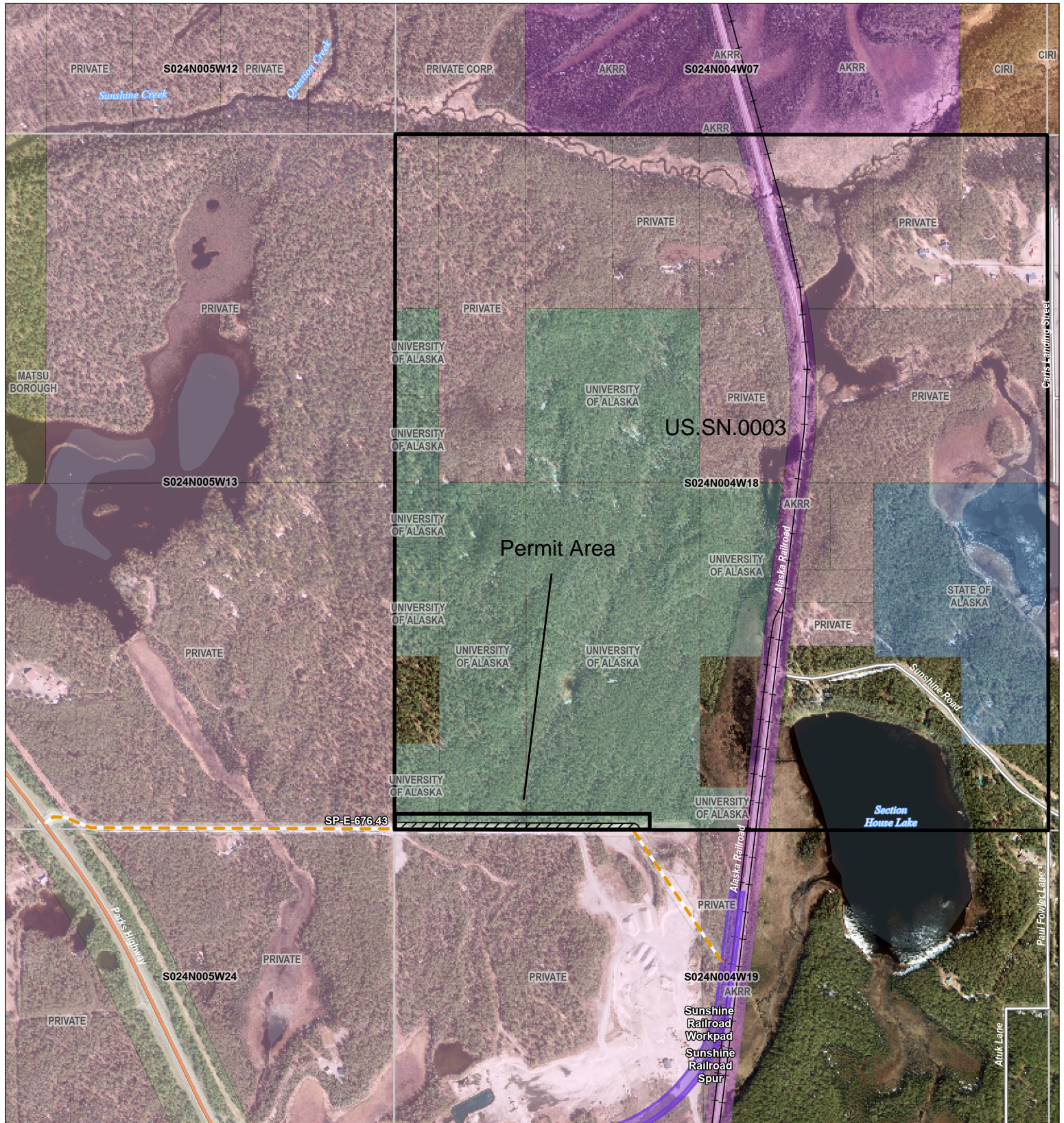
- Material Site
- Highway
- Roads
- Railroad

LAND OWNERSHIP

- University of Alaska
- State of Alaska
- Municipal/Borough
- Alaska Railroad Corp.
- Private/Private Corp.



This information has been prepared on behalf of and for the exclusive use of Alaska LNG, and is subject to and issued in accordance with the agreement between Glenframe and Worley. Worley accepts no liability or responsibility whatsoever for it in respect of any use of or reliance upon this information by any third party.

DOCUMENT ID:	University of Alaska Land Use
DATE:	10/15/2025
SCALE:	1:12,000
SHEET:	1 of 3







Alaska LNG Project
University of Alaska - S024N004W18

PROJECT FEATURES

-  Alaska LNG Project on University of Alaska Land
-  Gravel Access Road

EXISTING FEATURES

-  Railroad Spur/Workpad
-  Highway
-  Roads
-  Railroad

LAND OWNERSHIP

-  University of Alaska
-  State of Alaska
-  Municipal/Borough
-  Native Corp./Village Corp.
-  Alaska Railroad Corp.
-  Private/Private Corp.



ALASKA LNG



This information has been prepared on behalf of and for the exclusive use of Alaska LNG, and is subject to and issued in accordance with the agreement between Glenflame and Worley. Worley accepts no liability or responsibility whatsoever for it in respect of any use of or reliance upon this information by any third party.

DOCUMENT ID:	University of Alaska Land Use
DATE:	10/15/2025
SCALE:	1:12,000
SHEET:	3 of 3

