



PUBLIC NOTICE
FOREST FUEL REDUCTION
LAND USE PERMIT
HARDING LAKE, ALASKA

The University of Alaska Land Management Office (UALM) is seeking public comment on the attached disposal plan to issue a land use permit impacting University of Alaska land.

Parties interested in commenting on this disposal plan must submit written comments to UALM by fax at (907)786-7733, by email at ua-land@alaska.edu, or at the address listed below by no later than **5:00 P.M. on Thursday, October 23, 2025**, to be considered.

Anchorage Office
1835 Bragaw St., Ste. 490
Anchorage, Alaska 99508

UNIVERSITY OF ALASKA
Land Management

www.alaska.edu/ualand
ua-land@alaska.edu

Fairbanks Office
2025 Yukon Dr., Ste. 211
Fairbanks, Alaska 99775



DISPOSAL PLAN

FOREST FUEL REDUCTION LAND USE PERMIT HARDING LAKE, ALASKA

The University of Alaska ("University") intends to issue a land use permit authorizing the reduction of forest fuels near Harding Lake, Alaska. The permit term is through December 31, 2030.

This disposal plan is effective as long as the University owns the parcel.

PARCEL INFORMATION

<u>PARCEL #</u>	<u>LOCATION</u>	<u>MTRS & LEGAL DESCRIPTION</u>	<u>ACRES</u>
HD.DL.0026	Harding Lake, Alaska	T5S, R4E, Fairbanks Meridian, Sec. 25, a portion of the southern boundary of the SW4, and Sec. 26, a portion of the western boundary of the E2SW4 and S2NE4. According to the GLO survey plat of Township 5 South, Range 4 East, of the Fairbanks Meridian, Alaska, approved by the U.S. Surveyor General's Office in Juneau, Alaska on May 24, 1922.	*20

***approximate acres**

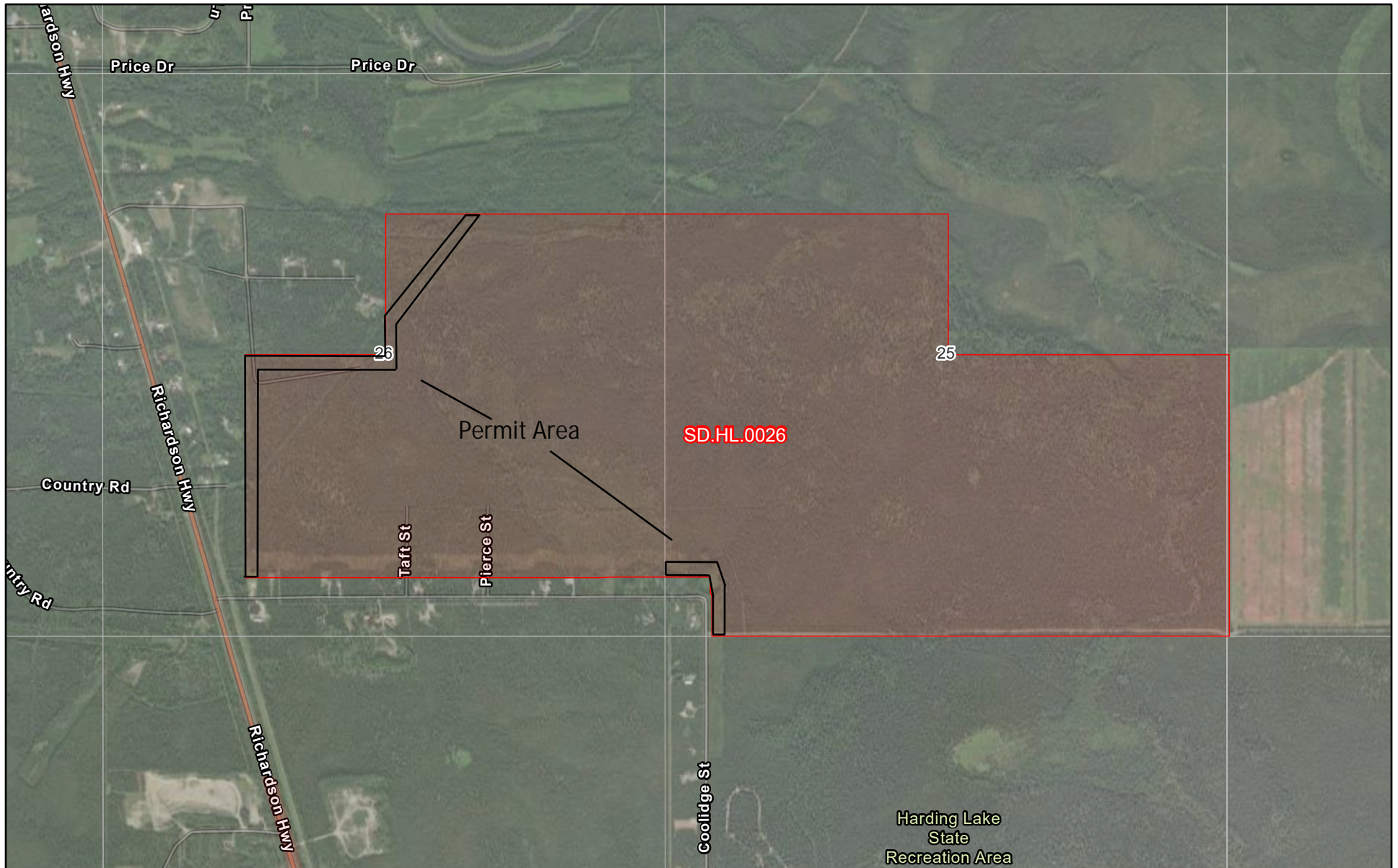
Anchorage Office
1835 Bragaw St., Ste. 490
Anchorage, Alaska 99508

UNIVERSITY OF ALASKA
Land Management

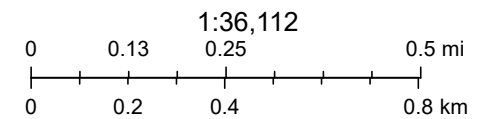
www.alaska.edu/ualand
ua-land@alaska.edu

Fairbanks Office
2025 Yukon Dr., Ste. 211
Fairbanks, Alaska 99775

Public Notice



 Permit Area



Maxar, Microsoft, Sources: Esri, TomTom, Garmin, FAO, NOAA, USGS, © OpenStreetMap contributors, and the GIS User Community

University of Alaska Land Management

Maxar, Microsoft | Bureau of Land Management (BLM), Alaska | State of Alaska, Esri, TomTom, Garmin, SafeGraph, METI/NASA, USGS, EPA, NPS, US Census Bureau, USDA, USFWS |