



PUBLIC NOTICE of Intent to Sell Multiple Parcels of University of Alaska Land

The University of Alaska Land Management Office (UALM) is seeking public comment on the attached disposal plan to sell land. All parcels will be sold at or above fair market value.

Parties interested in commenting on this proposed disposal plan must submit written comments to UALM by fax at (907) 786-7733, by email at ua-land@alaska.edu, or at the address listed below no later than **5:00 P.M. on Friday, August 22, 2025**, to be considered.

Anchorage Office
1835 Bragaw St. Ste. 490
Anchorage, Alaska 99508

UNIVERSITY OF ALASKA
Land Management

www.alaska.edu/ualand
ua-land@alaska.edu

Fairbanks Office
2025 Yukon Dr. Ste. 211
Fairbanks, Alaska 99775



DISPOSAL PLAN

Intent to Sell Multiple Parcels of University of Alaska Land

The University of Alaska ("University") intends to offer several parcels of land for sale at or above fair market value. The parcels are located in northern and southeast Alaska and include parcels with constructed and unconstructed road access.

The standard documents that will be used to close University land sales in this offering will be available for review on the UA Land Management website when the parcels are listed.

This disposal plan is effective as long as the University owns the parcels.

PARCEL INFORMATION

<u>PARCEL #</u>	<u>LOCATION</u>	<u>MTRS & LEGAL DESCRIPTION</u>	<u>ACRES</u>
GU.CV.0007	Cordova, Alaska	Copper River Meridian T. 15 S., R. 3 W., Sec. 33, Tract 4, containing 189.5 acres more or less, according to the survey plat of Alaska State Land Survey No. 88-51 filed in the Cordova Recording District on January 31, 1991, as Plat 91-2.	189.5
<u>DESCRIPTION:</u>		This parcel is located approximately 1.17 miles down Whitshed Road and runs parallel for approximately 1.47 miles, with portions of the parcel directly adjacent to Whitshed Road.	
GU.CV.0008	Cordova, Alaska	Copper River Meridian T. 15 S., R. 3 W., Sec. 33, Tract 5, containing 39.88 acres more or less, according to the survey plat of Alaska State Land Survey No. 88-51 filed in the Cordova Recording District on January 31, 1991, as Plat 91-2.	39.88
<u>DESCRIPTION:</u>		This parcel is located on Whitshed Road, behind and adjacent to UA Parcel GU.CV.0007.	
AN.BG.0004	Anchorage, Alaska	Seward Meridian, T. 13 N., R. 3 W., Sec. 21, Tract 4B, according to the official plat thereof, filed in	2.11

UNIVERSITY OF ALASKA
Land Management

Anchorage Office
1835 Bragaw St. Ste. 490
Anchorage, Alaska 99508

www.alaska.edu/ualand
ua-land@alaska.edu

Fairbanks Office
2025 Yukon Dr. Ste. 211
Fairbanks, Alaska 99775

		the Anchorage Recording District on April 20, 1984, as Plat 84-111.	
	<u>DESCRIPTION:</u>	This parcel is located west of Bragaw St. at the intersection of Bragaw St. and Reka Dr.	
FA.GR.0003	Fairbanks, Alaska	Fairbanks Meridian T. 1 S., R. 1 W., Sec. 7, Lot 3, Otto Geist Subdivision, containing 8.862 acres more or less, according to Plat 87-67 filed in the Fairbanks Recording District on August 12, 1987.	8.862
	<u>DESCRIPTION:</u>	This parcel is located on the east side of Loftus Road south of the Loftus Road and Geist Road intersection.	
FA.GR.0004	Fairbanks, Alaska	Fairbanks Meridian T. 1 S., R. 2 W., Sec. 12, Portion No. 3 and Portion No. 4, Bunnell Park Subdivision, containing 21.935 acres more or less, according to Plat 84-179 filed in the Fairbanks Recording District on August 21, 1984.	21.935
	<u>DESCRIPTION:</u>	This parcel is located at the southeast corner of Geist Road and the Parks Highway.	
FA.CO.0001	Fairbanks, Alaska	Fairbanks Meridian T. 1 N., R. 1 W., Sec. 33, Lots 1, 2, 3, and Tract C, Otto Geist Subdivision, containing 61.697 acres more or less, according to the GLO Survey Plat approved by the U.S. Surveyor General's Office in Juneau, Alaska on October 9, 1913.	61.697
	<u>DESCRIPTION:</u>	This parcel is located north of College Road and includes the property north of Old College Road and the property between Old College Road and College Road.	
FA.YE.0006	Fairbanks, Alaska	Fairbanks Meridian T. 1 S., R. 2 W., Sec. 11, Tract B, Yak Subdivision, containing 62.875 acres more or less, according to Plat 93-141 filed in the Fairbanks Recording District on April 23, 1993. Fairbanks Meridian T. 1 S., R. 2 W., Sec. 2, SE1/4SW1/4; less that entire portion of Mineral Survey 1661, approved by the Public Survey Office in Juneau, Alaska on November 6, 1935; containing 20 acres more or less, according to the Supplemental Plat accepted by the U.S. D.O.I. Bureau of Land Management in	126.875

UNIVERSITY OF ALASKA
Land Management

Anchorage Office
1835 Bragaw St. Ste. 490
Anchorage, Alaska 99508

www.alaska.edu/ualand
ua-land@alaska.edu

Fairbanks Office
2025 Yukon Dr. Ste. 211
Fairbanks, Alaska 99775

		<p>Washington, D.C. on July 29, 1970.</p> <p>Fairbanks Meridian T. 1 S., R. 2 W., Sec. 2, SW1/4SE1/4, containing 40.0 acres more or less, according to the Supplemental Plat accepted by the U.S. D.O.I. Bureau of Land Management in Washington, D.C. on July 29, 1970.</p> <p>Fairbanks Meridian T. 1 S., R. 2 W., Sec. 2, SW1/4SW1/4; less that entire portion of Mineral Survey 1661, approved by the Public Survey Office in Juneau, Alaska on November 6, 1935; containing 4 acres more or less, according to the Supplemental Plat accepted by the U.S. D.O.I. Bureau of Land Management in Washington, D.C. on July 29, 1970.</p>	
<u>DESCRIPTION:</u>		This parcel is located north of the Yak Subdivision, northwest of Crestmont Dr., and north of Lingonberry Lane.	
MS.WS.0001	Wasilla, Alaska	Seward Meridian T. 17 N., R. 1 W., Sec. 6, Lots 4 and 5, containing 74.11 acres more or less, according to GLO Survey Plat approved by the U.S. Surveyor General's Office in Juneau, Alaska on February 19, 1915.	74.11
<u>DESCRIPTION:</u>		This parcel is located at the end of N. Stanley Drive, which is accessed from the George Parks Highway.	
MS.WS.0005	Wasilla, Alaska	Seward Meridian T. 17 N., R. 2 W., Sec. 8, W1/2NW1/4NW1/4, NE1/4NW1/4SW1/4, containing 30.0 acres more or less, according to the Supplemental Plat of Section 8, accepted by the United States Department of the Interior, BLM in Washington, D.C. on February 3, 1953.	30.0
<u>DESCRIPTION:</u>		This parcel is bisected by S. Ridgecrest Road, which is accessed from the George Parks Highway.	
MS.WS.0006	Wasilla, Alaska	Seward Meridian T. 17 N., R. 1 W., Sec. 17, NE1/4SW1/4, containing 40.0 acres more or less, according to GLO Survey Plat approved by the U.S. Surveyor General's Office in Juneau, Alaska on February 19, 1915.	40.0

UNIVERSITY OF ALASKA
Land Management

Anchorage Office
1835 Bragaw St. Ste. 490
Anchorage, Alaska 99508

www.alaska.edu/ualand
ua-land@alaska.edu

Fairbanks Office
2025 Yukon Dr. Ste. 211
Fairbanks, Alaska 99775

<u>DESCRIPTION:</u>		This parcel is located adjacent to Lakewood Drive, which is accessed from S. Knik Goose Bay Road.	
MS.SR.0006	Wasilla, Alaska	Seward Meridian T. 18 N., R. 1 W., Sec. 19, E1/2SE1/4; less Lot 1, Arend's Place, according to Plat 98-88, recorded in the Palmer Recording District on July 31, 1998 and less Tract A, Safety Subdivision, according to Plat 2002-85, recorded in the Palmer Recording District on August 8, 2002; containing 75.419 acres more or less, according to GLO Survey Plat approved by the U.S. Surveyor General's Office in Juneau, Alaska on May 3, 1915.	75.419
<u>DESCRIPTION:</u>		This parcel is located on N. Church Road and N. Pittman Road.	
MS.SR.0008	Wasilla, Alaska	Seward Meridian T. 18 N., R. 1 W., Sec. 21, SE1/4NW1/4, containing 40.0 acres more or less, according to GLO Survey Plat approved by the U.S. Surveyor General's Office in Juneau, Alaska on May 3, 1915.	40.0
<u>DESCRIPTION:</u>		This parcel is located on the south side of the intersection of N. Suslositna Street and W. Birdnest Drive.	
MS.SR.0009	Wasilla, Alaska	Seward Meridian T. 18 N., R. 1 W., Sec. 21, S1/2SE1/4, containing 80.0 acres more or less, according to GLO Survey Plat approved by the U.S. Surveyor General's Office in Juneau, Alaska on May 3, 1915.	80.0
<u>DESCRIPTION:</u>		This parcel is located on the west side of Dartmoor Street between W. Faith Road and W. Wilmington Drive.	
MS.SR.0010	Wasilla, Alaska	Seward Meridian T. 18 N., R. 1 W., Sec. 28, NW1/4, containing 160.0 acres more or less, according to GLO Survey Plat approved by the U.S. Surveyor General's Office in Juneau, Alaska on May 3, 1915.	160.0
<u>DESCRIPTION:</u>		This parcel is located at the west end of W. Canterbury Drive and W. Wilmington Drive.	

UNIVERSITY OF ALASKA
Land Management

Anchorage Office
1835 Bragaw St. Ste. 490
Anchorage, Alaska 99508

www.alaska.edu/ualand
ua-land@alaska.edu

Fairbanks Office
2025 Yukon Dr. Ste. 211
Fairbanks, Alaska 99775

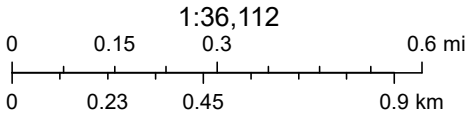
Map of UALM Parcels GU.CV.0007 and GU.CV.0008



7/17/2025, 12:03:59 PM

Investment & Educational Properties - All Regions - Public View

- Investment
- PLSS Sections - Source: AK DNR
- PLSS Townships - Source: AK DNR



Sources: Esri, TomTom, Garmin, FAO, NOAA, USGS, © OpenStreetMap contributors, and the GIS User Community, Maxar

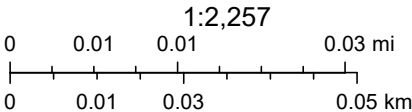
Map of UALM Parcels AN.BG.0004



7/17/2025, 12:05:49 PM

Investment & Educational Properties - All Regions - Public View

- Investment
- PLSS Sections - Source: AK DNR
- PLSS Townships - Source: AK DNR



Microsoft, Sources: Esri, TomTom, Garmin, FAO, NOAA, USGS, © OpenStreetMap contributors, and the GIS User Community

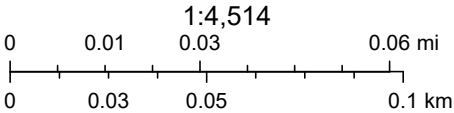
Map of UALM Parcels FA.GR.0003



7/17/2025, 12:07:48 PM

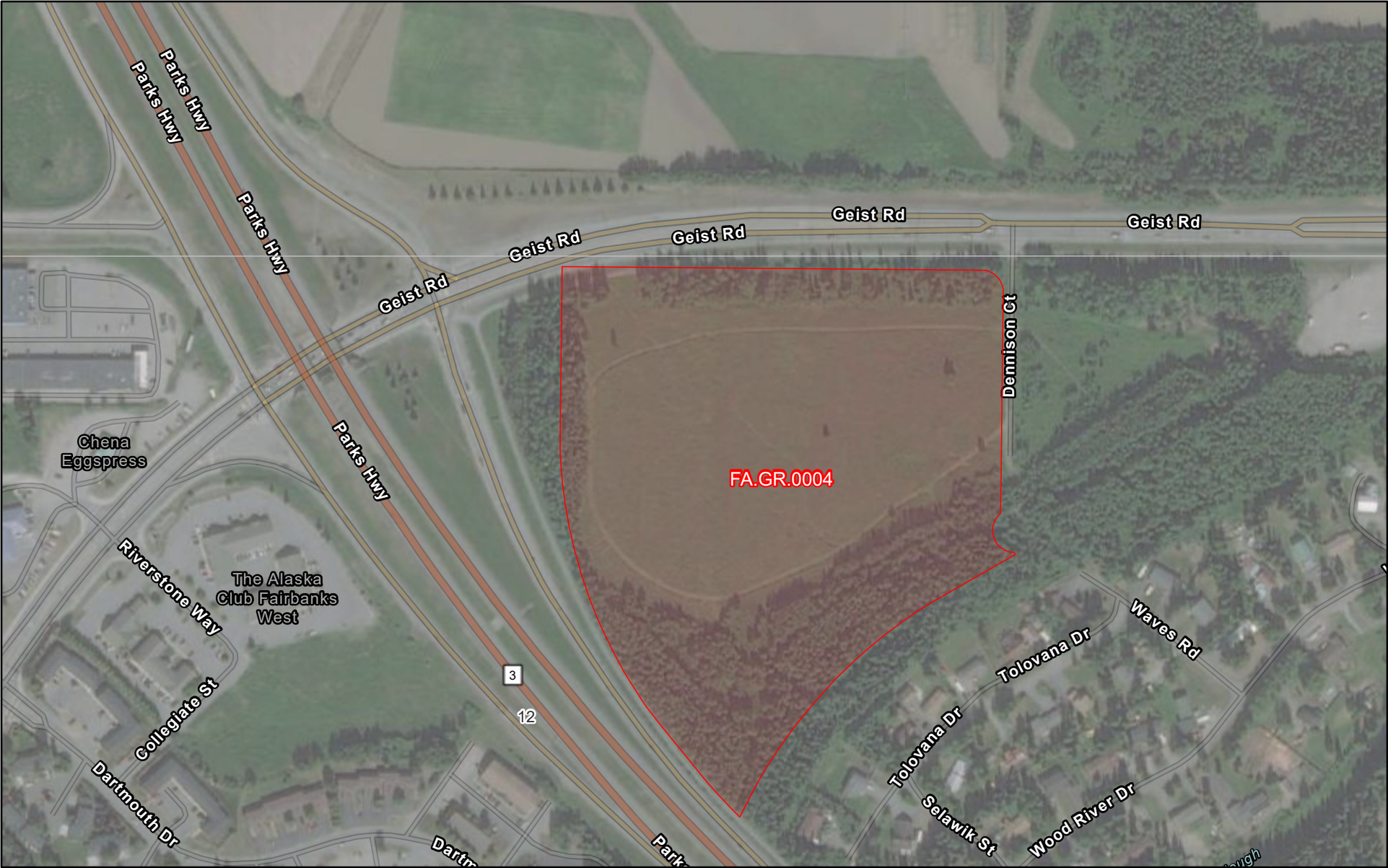
Investment & Educational Properties - All Regions - Public View

- Investment
- PLSS Sections - Source: AK DNR
- PLSS Townships - Source: AK DNR



Maxar, Microsoft, Sources: Esri, TomTom, Garmin, FAO, NOAA, USGS, © OpenStreetMap contributors, and the GIS User Community

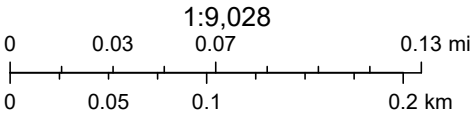
Map of UALM Parcels FA.GR.0004



7/17/2025, 12:08:50 PM

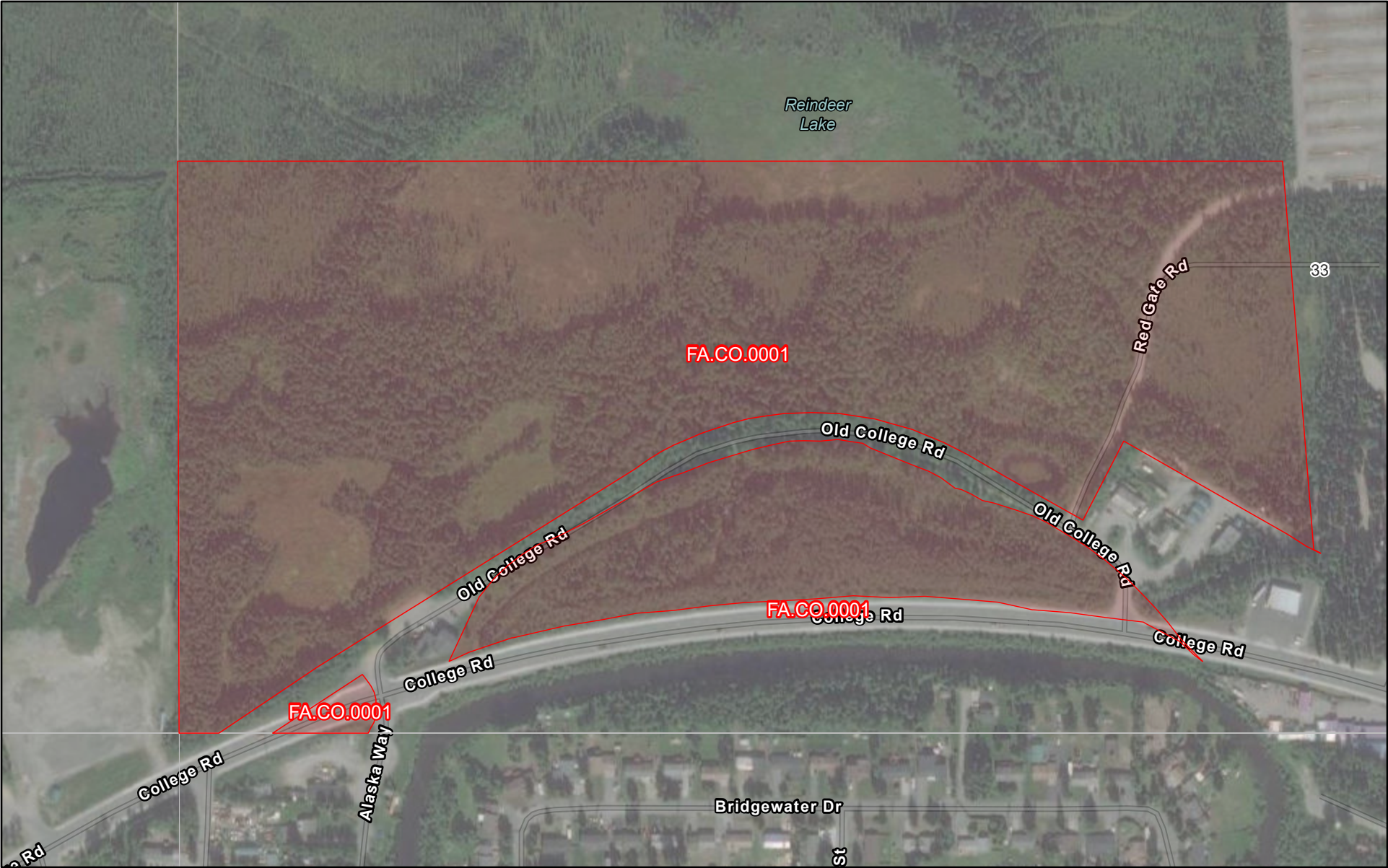
Investment & Educational Properties - All Regions - Public View

- Investment
- PLSS Sections - Source: AK DNR
- PLSS Townships - Source: AK DNR



Maxar, Microsoft, Sources: Esri, TomTom, Garmin, FAO, NOAA, USGS, © OpenStreetMap contributors, and the GIS User Community

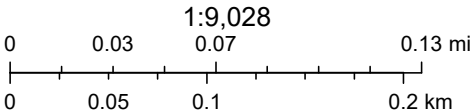
Map of UALM Parcels FA.CO.0001



7/17/2025, 12:11:00 PM

Investment & Educational Properties - All Regions - Public View

- Investment
- PLSS Sections - Source: AK DNR
- PLSS Townships - Source: AK DNR



Maxar, Microsoft, Sources: Esri, TomTom, Garmin, FAO, NOAA, USGS, © OpenStreetMap contributors, and the GIS User Community

Map of UALM Parcels FA.YE.0003 and FA.YE.0006



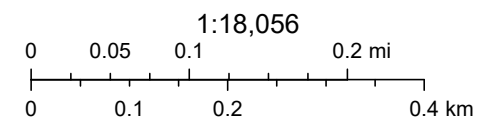
7/17/2025, 12:01:52 PM

Investment & Educational Properties - All Regions - Public View

Investment

PLSS Sections - Source: AK DNR

PLSS Townships - Source: AK DNR



Maxar, Microsoft, Sources: Esri, TomTom, Garmin, FAO, NOAA, USGS, © OpenStreetMap contributors, and the GIS User Community

University of Alaska Land Management

Maxar, Microsoft | State of Alaska, © OpenStreetMap, Microsoft, Esri, TomTom, Garmin, SafeGraph, METI/NASA, USGS, EPA, NPS, US Census Bureau, USDA, USFWS |

Map of UALM Parcels MS.WS.0001



7/17/2025, 12:12:01 PM

Investment & Educational Properties - All Regions - Public View



Investment

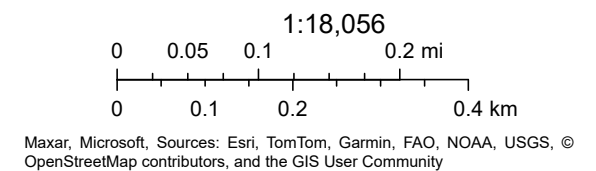


PLSS Sections - Source: AK DNR



PLSS Townships - Source: AK DNR

Maxar, Microsoft | Matanuska-Susitna Borough GIS, State of Alaska, © OpenStreetMap, Microsoft, Esri, TomTom, Garmin, SafeGraph, METI/NASA, USGS, EPA, NPS, US Census Bureau, USDA, USFWS |



University of Alaska Land Management

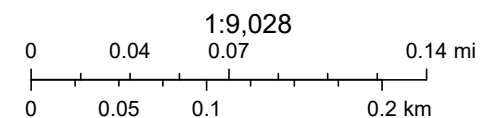
Map of UALM Parcels MS.WS.0005



7/17/2025, 12:13:07 PM

Investment & Educational Properties - All Regions - Public View

- Investment
- PLSS Sections - Source: AK DNR
- PLSS Townships - Source: AK DNR



Maxar, Microsoft, Sources: Esri, TomTom, Garmin, FAO, NOAA, USGS, © OpenStreetMap contributors, and the GIS User Community

University of Alaska Land Management

Maxar, Microsoft | Matanuska-Susitna Borough GIS, State of Alaska, © OpenStreetMap, Microsoft, Esri, TomTom, Garmin, SafeGraph, METI/NASA, USGS, EPA, NPS, US Census Bureau, USDA, USFWS |

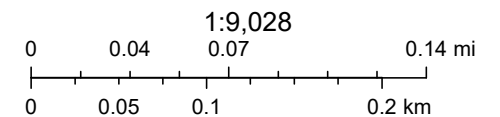
Map of UALM Parcels MS.WS.0006



7/17/2025, 12:13:59 PM

Investment & Educational Properties - All Regions - Public View

- Investment
- PLSS Sections - Source: AK DNR
- PLSS Townships - Source: AK DNR



Maxar, Microsoft, Sources: Esri, TomTom, Garmin, FAO, NOAA, USGS, © OpenStreetMap contributors, and the GIS User Community

University of Alaska Land Management

Maxar, Microsoft | Matanuska-Susitna Borough GIS, State of Alaska, © OpenStreetMap, Microsoft, Esri, TomTom, Garmin, SafeGraph, METI/NASA, USGS, EPA, NPS, US Census Bureau, USDA, USFWS |

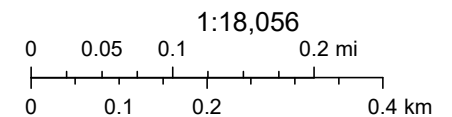
Map of UALM Parcels MS.SR.0006



7/17/2025, 12:15:09 PM

Investment & Educational Properties - All Regions - Public View

- Investment
- PLSS Sections - Source: AK DNR
- PLSS Townships - Source: AK DNR



Maxar, Microsoft, Sources: Esri, TomTom, Garmin, FAO, NOAA, USGS, © OpenStreetMap contributors, and the GIS User Community

University of Alaska Land Management

Maxar, Microsoft | Matanuska-Susitna Borough GIS, State of Alaska, © OpenStreetMap, Microsoft, Esri, TomTom, Garmin, SafeGraph, METI/NASA, USGS, EPA, NPS, US Census Bureau, USDA, USFWS |

Map of UALM Parcels MS.SR.0008



7/17/2025, 12:16:20 PM

Investment & Educational Properties - All Regions - Public View



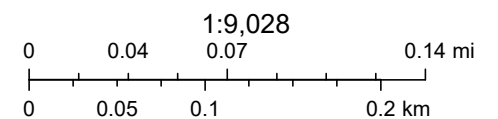
Investment



PLSS Sections - Source: AK DNR



PLSS Townships - Source: AK DNR



Maxar, Microsoft, Sources: Esri, TomTom, Garmin, FAO, NOAA, USGS, © OpenStreetMap contributors, and the GIS User Community

University of Alaska Land Management

Maxar, Microsoft | Matanuska-Susitna Borough GIS, State of Alaska, © OpenStreetMap, Microsoft, Esri, TomTom, Garmin, SafeGraph, METI/NASA, USGS, EPA, NPS, US Census Bureau, USDA, USFWS |

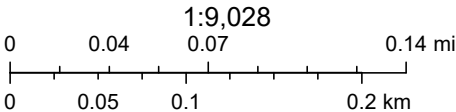
Map of UALM Parcels MS.SR.0009



7/17/2025, 12:17:54 PM

Investment & Educational Properties - All Regions - Public View

- Investment
- PLSS Sections - Source: AK DNR
- PLSS Townships - Source: AK DNR



Maxar, Microsoft, Sources: Esri, TomTom, Garmin, FAO, NOAA, USGS, © OpenStreetMap contributors, and the GIS User Community

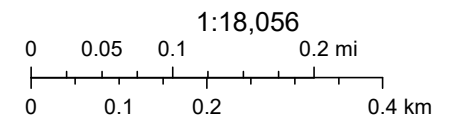
Map of UALM Parcels MS.SR.0010



7/17/2025, 12:18:49 PM

Investment & Educational Properties - All Regions - Public View

- Investment
- PLSS Sections - Source: AK DNR
- PLSS Townships - Source: AK DNR



Maxar, Microsoft, Sources: Esri, TomTom, Garmin, FAO, NOAA, USGS, © OpenStreetMap contributors, and the GIS User Community

University of Alaska Land Management

Maxar, Microsoft | Matanuska-Susitna Borough GIS, State of Alaska, © OpenStreetMap, Microsoft, Esri, TomTom, Garmin, SafeGraph, METI/NASA, USGS, EPA, NPS, US Census Bureau, USDA, USFWS |