



PUBLIC NOTICE of Intent to Sell Multiple Parcels of University of Alaska Land

The University of Alaska Land Management Office (UALM) is seeking public comment on the attached disposal plan to sell land. All parcels will be sold at or above fair market value.

Parties interested in commenting on this proposed disposal plan must submit written comments to UALM by fax at (907) 786-7733, by email at ua-land@alaska.edu, or at the address listed below no later than **5:00 P.M. on Thursday, June 12, 2025**, to be considered.

Anchorage Office
1835 Bragaw St. Ste. 490
Anchorage, Alaska 99508

UNIVERSITY OF ALASKA
Land Management

www.alaska.edu/ualand
ua-land@alaska.edu

Fairbanks Office
2025 Yukon Dr. Ste. 211
Fairbanks, Alaska 99775



DISPOSAL PLAN

Intent to Sell Multiple Parcels of University of Alaska Land

The University of Alaska ("University") intends to offer several parcels of land for sale at or above the fair market value. The parcels are located throughout the state of Alaska. The parcels are rural and may include parcels with unconstructed road access.

The standard documents that will be used to close University land sales in this offering will be available for review on the UA Land Management website when the parcels are listed.

This disposal plan is effective as long as the University owns the parcels.

PARCEL INFORMATION

| <u>PARCEL #</u> | <u>LOCATION</u> | <u>MTRS & LEGAL DESCRIPTION</u> | <u>ACRES</u> |
|----------------------------|------------------------------|---------------------------------------------------------------------------------------------------------------------------------------------------------------------------------------------------------------------------------------------------|---------------------|
| WR.MC.0073 | McCarthy, Alaska | Copper River Meridian T. 5 S., R. 13 E., Sec: 25. Tract A-2, McCarthy Creek Subdivision Phase II, recorded in the Chitina Recording District on April 21, 1997, as Plat No. 97-8, containing 11.73 acres more or less. | 11.73 |
| <u>DESCRIPTION:</u> | | This parcel is located in McCarthy off Nazina Road on Malachite Trail and Pyrite Ave. | |
| WR.BB.0003 | McCarthy, Alaska | Copper River Meridian T. 5 S., R. 14 E., Sec. 17. Tract C, Blackburn Subdivision, containing 2.007 acres more or less, according to Plat 96-10 filed in the Chitina Recording District on June 6th, 1996. | 2.007 |
| <u>DESCRIPTION:</u> | | This parcel is located past milepost 60 on McCarthy Road, across from the McCarthy Airport. | |
| FA.BV.0002 | Fairbanks, Alaska | Fairbanks Meridian T. 1 S., R. 2 W., Sec. 16, Tract B, Bog View Subdivision, containing 122.5 acres more or less, according to Plat 2005-9 filed in the Fairbanks Recording District on January 13, 2009. | 122.5 |

UNIVERSITY OF ALASKA
Land Management

Anchorage Office
1835 Bragaw St. Ste. 490
Anchorage, Alaska 99508

www.alaska.edu/ualand
ua-land@alaska.edu

Fairbanks Office
2025 Yukon Dr. Ste. 211
Fairbanks, Alaska 99775

| | | | |
|----------------------------|--------------------------------------------|-------------------------------------------------------------------------------------------------------------------------------------------------------------------------------------------------------------------------------------------|--------------|
| <u>DESCRIPTION:</u> | | This parcel is located on the north/northeast side of Chena Ridge Road across from Canterbury Dr., Ridgepointe Dr., and Ellesmere Dr. | |
| KN.SW.0019 | <u>Seward,</u> <u>Alaska</u> | Seward Meridian T. 1 S., R. 1 W., Sec. 10, Lot 29A, Block 8, ORIGINAL TOWNSITE OF SEWARD, NORMAN REPLAT, containing 0.344 acres more or less, according to Plat 97-23 filed in the Seward Recording District on December 19, 1997. | 0.344 |
| <u>DESCRIPTION:</u> | | This parcel is located in Seward, Alaska on the east side of 5 th Ave. between Adam St. and Railway Ave. | |
| FA.CH.0012 | <u>Fairbanks,</u> <u>Alaska</u> | Lot 3, Sec. 7, T. 1 S., R. 2 E., Fairbanks Meridian, according to the plat approved by the U.S. Surveyor General's Office in Juneau, Alaska, on July 13, 1921, containing 46.01, acres more or less. | 46.01 |
| <u>DESCRIPTION:</u> | | This parcel is located along the Chena River approximately 1.25 miles down river from the Chena River Boat Launch off Nordale Road. | |
| FA.CH.0013 | <u>Fairbanks,</u> <u>Alaska</u> | Lot 4, Sec. 7, T. 1 S., R. 2 E., Fairbanks Meridian, according to plat approved by the U.S. Surveyor General's Office in Juneau, Alaska, on July 13, 1921, containing 44.99 acres more or less. | 44.99 |
| <u>DESCRIPTION:</u> | | This parcel is located along the Chena River approximately 1.7 miles down river from the Chena River Boat Launch off Nordale Road. | |

UNIVERSITY OF ALASKA
Land Management

Anchorage Office
1835 Bragaw St. Ste. 490
Anchorage, Alaska 99508

www.alaska.edu/ualand
ua-land@alaska.edu

Fairbanks Office
2025 Yukon Dr. Ste. 211
Fairbanks, Alaska 99775

Map of UALM Parcel WR.MC.0073



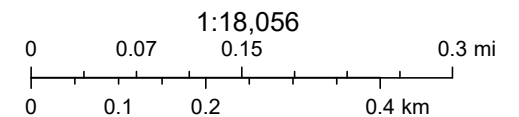
4/30/2025, 4:44:37 PM

Investment & Educational Properties - All Regions - Public View

Investment

PLSS Sections - Source: AK DNR

PLSS Townships - Source: AK DNR



Source: Esri, Maxar, Earthstar Geographics, and the GIS User Community,
Sources: Esri, TomTom, Garmin, FAO, NOAA, USGS, © OpenStreetMap

University of Alaska Land Management

State of Alaska, © OpenStreetMap, Microsoft, Esri, TomTom, Garmin, SafeGraph, METI/NASA, USGS, EPA, NPS, US Census Bureau, USDA, USFWS |

Map of UALM Parcel WR.BB.0003



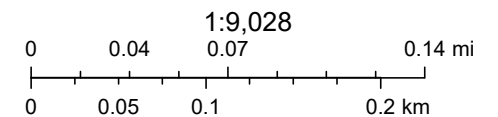
4/30/2025, 4:45:32 PM

Investment & Educational Properties - All Regions - Public View

Investment

PLSS Sections - Source: AK DNR

PLSS Townships - Source: AK DNR

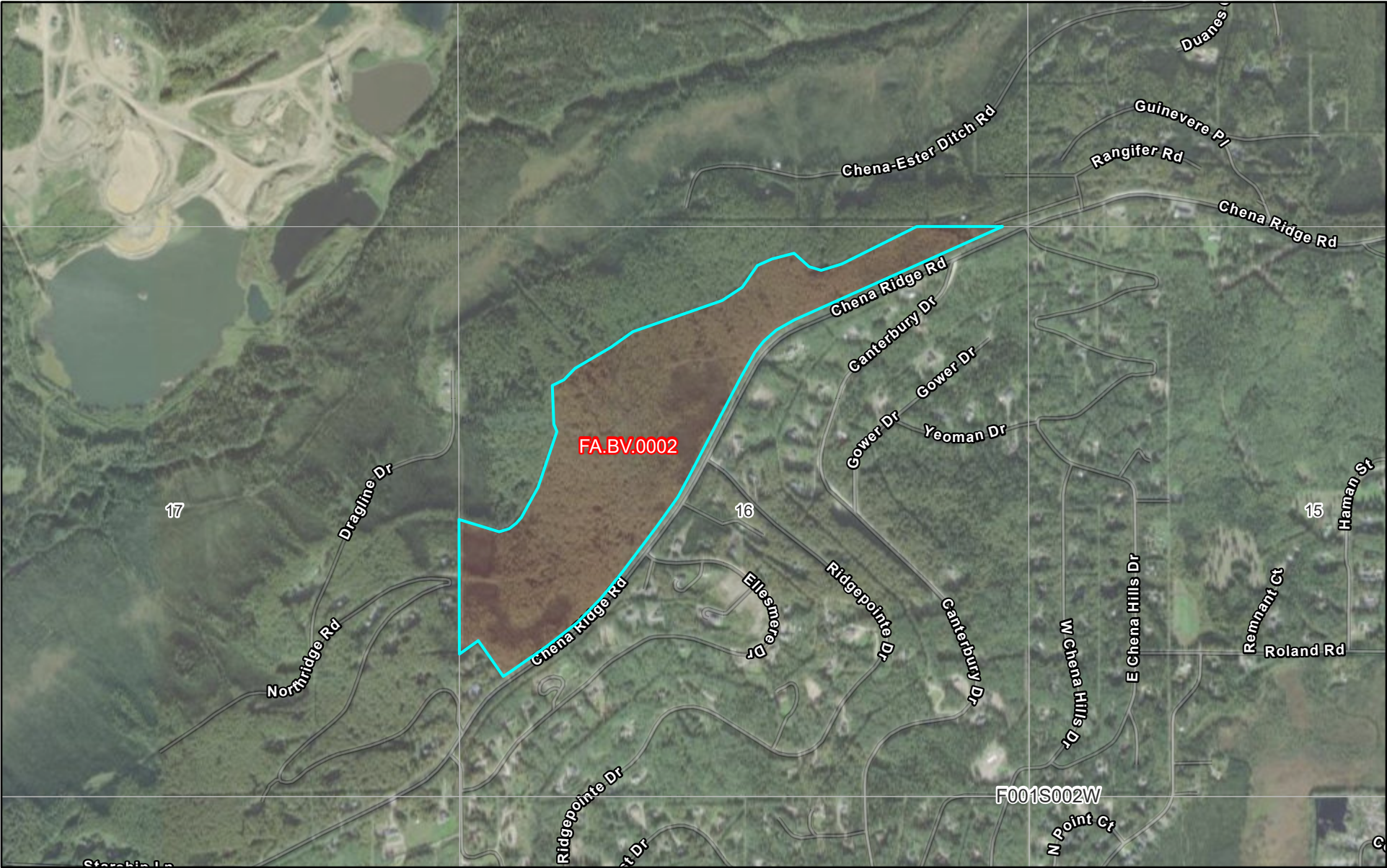


Source: Esri, Maxar, Earthstar Geographics, and the GIS User Community,
Sources: Esri, TomTom, Garmin, FAO, NOAA, USGS, © OpenStreetMap

University of Alaska Land Management

State of Alaska, © OpenStreetMap, Microsoft, Esri, TomTom, Garmin, SafeGraph, METI/NASA, USGS, EPA, NPS, US Census Bureau, USDA, USFWS |

Map of UALM Parcel FA.BV.0002



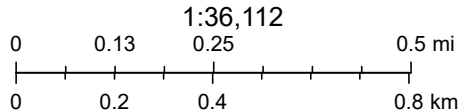
4/30/2025, 4:47:34 PM

Investment & Educational Properties - All Regions - Public View

Investment

PLSS Sections - Source: AK DNR

PLSS Townships - Source: AK DNR



Microsoft, Sources: Esri, TomTom, Garmin, FAO, NOAA, USGS, © OpenStreetMap contributors, and the GIS User Community

University of Alaska Land Management

Microsoft | State of Alaska, Esri, TomTom, Garmin, SafeGraph, METI/NASA, USGS, EPA, NPS, US Census Bureau, USDA, USFWS |

Map of UALM Parcel KN.SW.0019



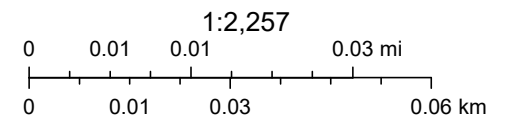
4/30/2025, 4:50:11 PM

Investment & Educational Properties - All Regions - Public View

Investment

PLSS Sections - Source: AK DNR

PLSS Townships - Source: AK DNR



Source: Esri, Maxar, Earthstar Geographics, and the GIS User Community, Sources: Esri, TomTom, Garmin, FAO, NOAA, USGS, © OpenStreetMap

University of Alaska Land Management

Kenai Peninsula Borough, State of Alaska, © OpenStreetMap, Microsoft, Esri, TomTom, Garmin, SafeGraph, METI/NASA, USGS, EPA, NPS, US Census Bureau, USDA, USFWS |

Map of UALM Parcel FA.CH.0012 and FA.CH.0013



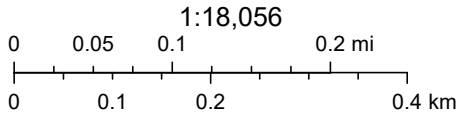
4/30/2025, 4:51:53 PM

Investment & Educational Properties - All Regions - Public View

Investment

PLSS Sections - Source: AK DNR

PLSS Townships - Source: AK DNR



Microsoft, Sources: Esri, TomTom, Garmin, FAO, NOAA, USGS, © OpenStreetMap contributors, and the GIS User Community

University of Alaska Land Management

Microsoft | State of Alaska, © OpenStreetMap, Microsoft, Esri, TomTom, Garmin, SafeGraph, METI/NASA, USGS, EPA, NPS, US Census Bureau, USDA, USFWS |