

These floor plans and other information may not be accurate as to the final home construction and do not reflect changes or later modifications. All dimensions and square footage numbers shown are approximate and reflect unverified information from third parties. The University of Alaska does not guarantee the accuracy or warranty any information in these plans.

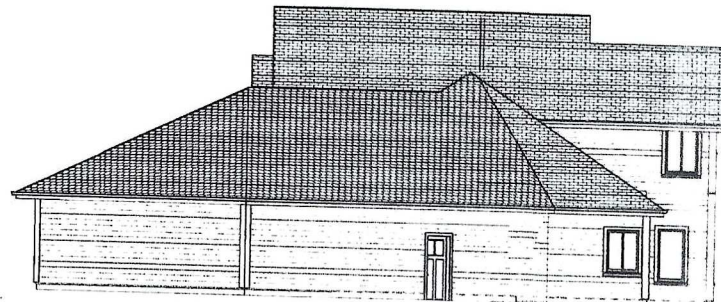
*we*

DATE: 10/26/2007	
PROJECT HISTORY	
SCALE: SEE DRAWING	CDG
DRAWN BY: CDO	SO FT.
LIVING AREA:	SUBDIVISION: RIVERBEND
BLUEPRINTS	
THE FUTURE STARTS WITH YOUR DREAMS	
PROJECT OWNER: MARY CROXTON RIVERBEND SUBDIVISION LOT 14 PALMER, AK 99664	
SHEET NO. 1	





FRONT EXTERIOR ELEVATION  
SCALE 1/8" = 1'-0"

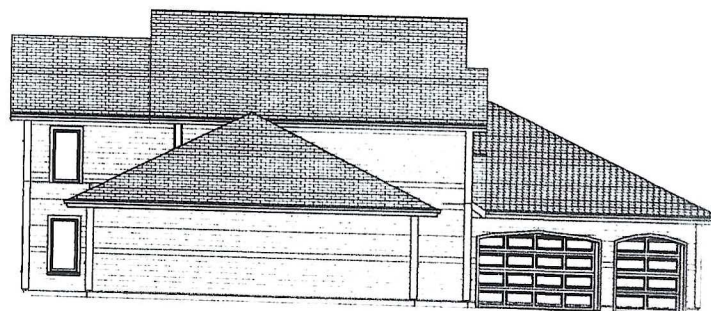


RIGHT EXTERIOR ELEVATION  
SCALE 1/8" = 1'-0"

These floor plans and other information may not be accurate as to the final home construction and do not reflect changes or later modifications. All dimensions and square footage numbers shown are approximate and reflect unverified information from third parties. The University of Alaska does not guarantee the accuracy or warranty any information in these plans.



REAR EXTERIOR ELEVATION  
SCALE 1/8" = 1'-0"



LEFT EXTERIOR ELEVATION  
SCALE 1/8" = 1'-0"

*[Handwritten signature]*

DATE:  
06/2007

PROJECT:  
MARY CROXTON  
RIVERBEND SUBDIVISION LOT 14  
PALMER, AK 99664

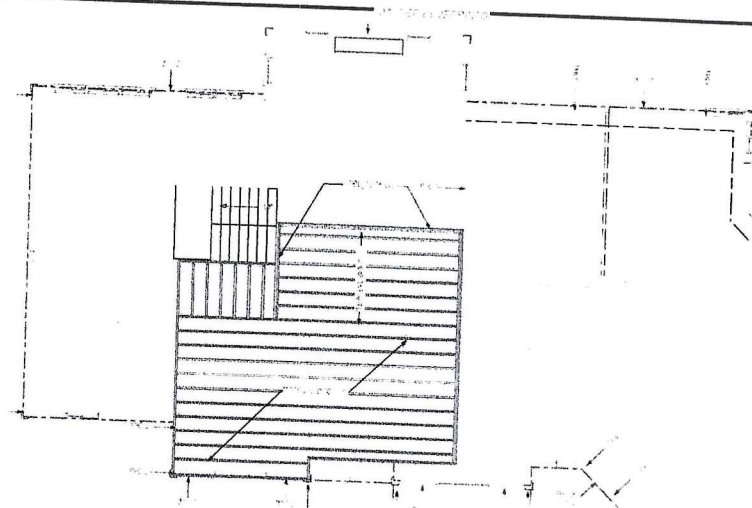
DESIGNER:  
UNIVERSITY OF ALASKA  
SCHOOL OF ARCHITECTURE  
660 EAST 10TH AVENUE  
ANCHORAGE, AK 99503

BY: JETHIN  
JETHIN ARCHITECTS, LLC  
1000 10TH AVENUE, SUITE 100  
ANCHORAGE, AK 99503

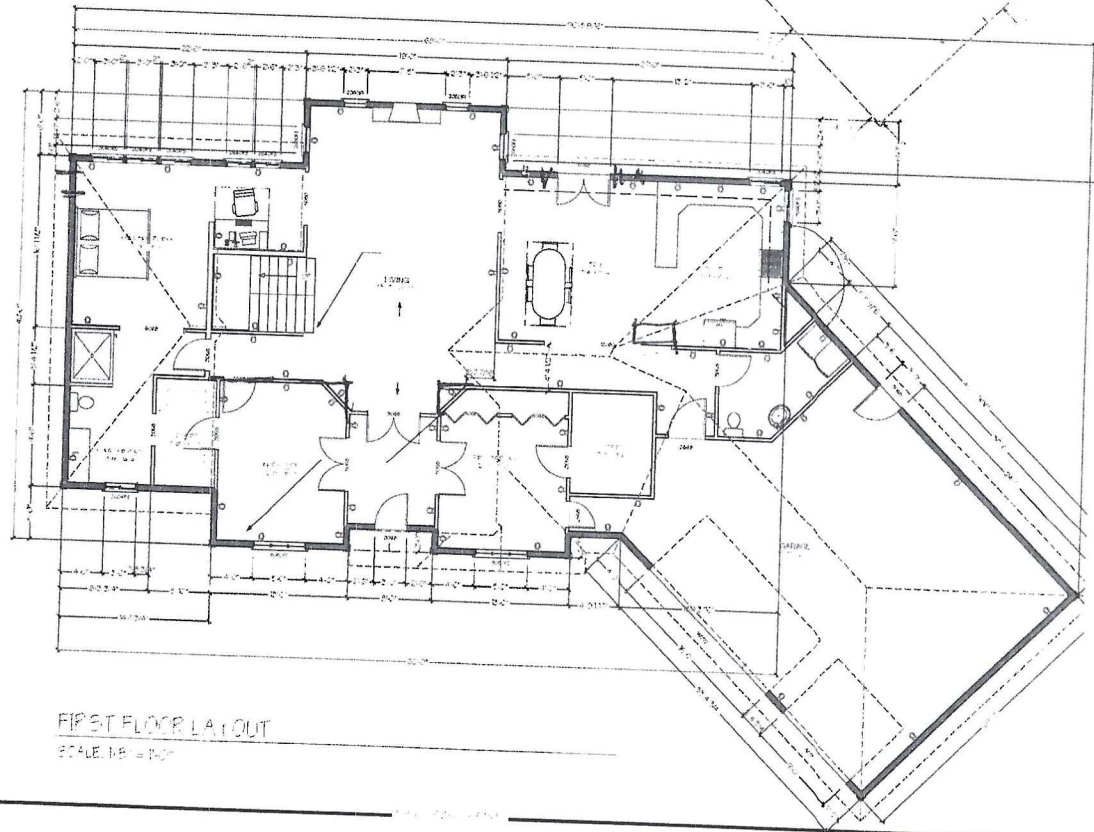
MARY CROXTON  
RIVERBEND SUBDIVISION LOT 14  
PALMER, AK 99664







BELOW SECOND FLOOR FRAMING  
SCALE: 1/8" = 1'-0"



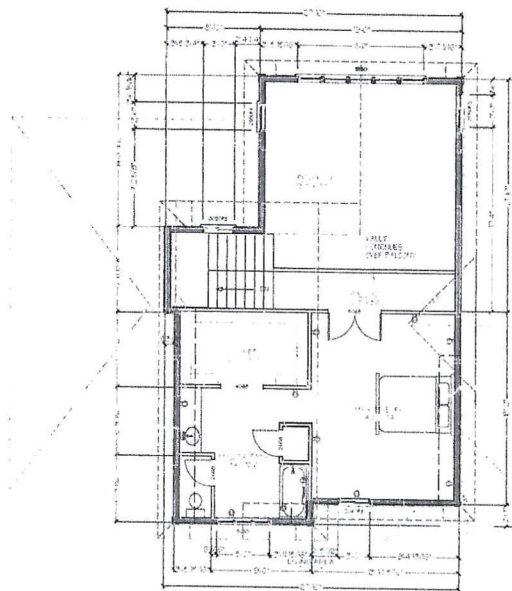
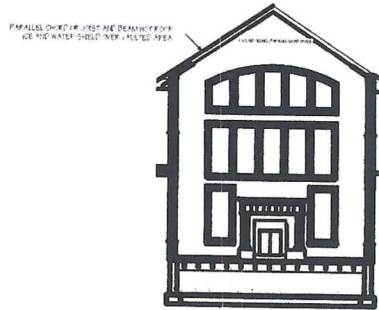
FIRST FLOOR LAYOUT  
SCALE: 1/8" = 1'-0"

These floor plans and other information may not be accurate as to the final home construction and do not reflect changes or later modifications. All dimensions and square footage numbers shown are approximate and reflect unverified information from third parties. The University of Alaska does not guarantee the accuracy or warranty any information in these plans.

*Handwritten signature/initials*

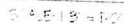
*Handwritten initials 'MC'*

These floor plans and other information may not be accurate as to the final home construction and do not reflect changes or later modifications. All dimensions and square footage numbers shown are approximate and reflect unverified information from third parties. The University of Alaska does not guarantee the accuracy or warranty any information in these plans.



SECOND FLOOR LAYOUT  
SCALE: 1/8" = 1'-0"

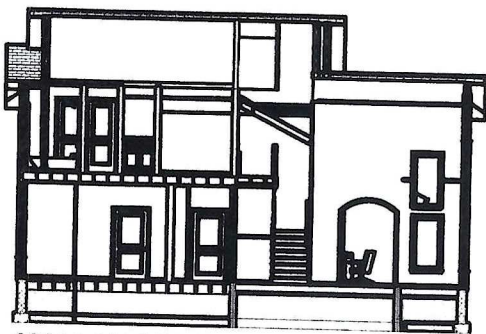
*Handwritten signature/initials*



These floor plans and other information may not be accurate as to the final home construction and do not reflect changes or later modifications. All dimensions and square footage numbers shown are approximate and reflect unverified information from third parties. The University of Alaska does not guarantee the accuracy or warranty any information in these plans.

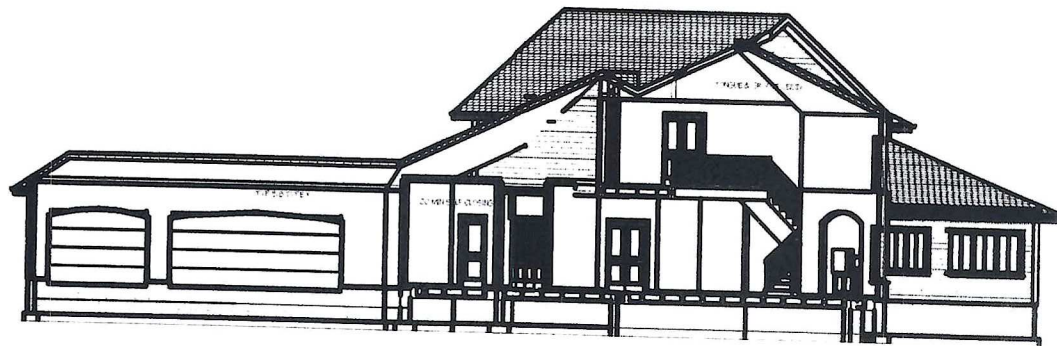
MARY CROXTON  
RIVERBEND SUBDIVISION LOT 14  
PALMER, AK 99654





CROSS SECTION A'

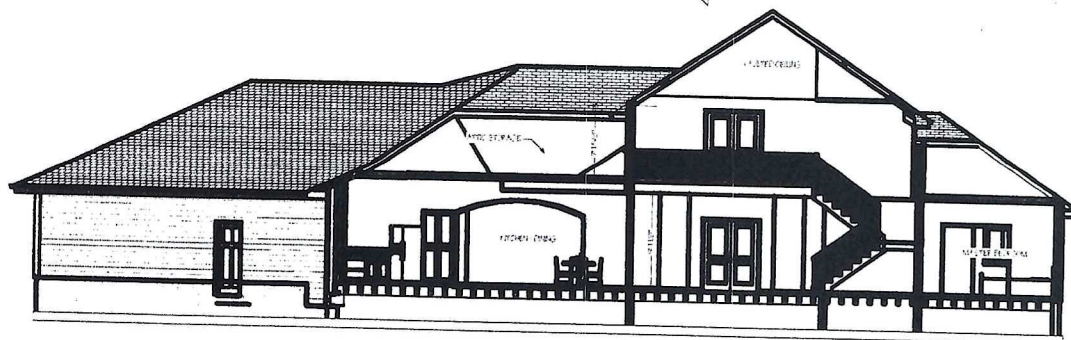
SCALE: 1/8" = 1'-0"



CROSS SECTION B'

SCALE: 1/8" = 1'-0"

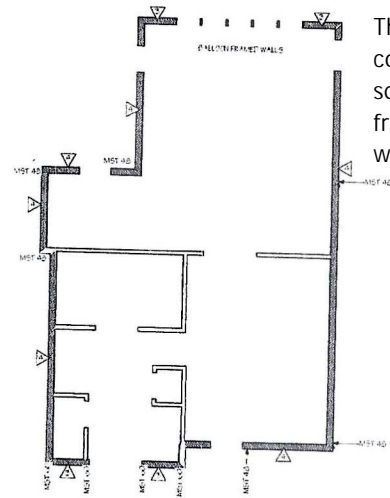
These floor plans and other information may not be accurate as to the final home construction and do not reflect changes or later modifications. All dimensions and square footage numbers shown are approximate and reflect unverified information from third parties. The University of Alaska does not guarantee the accuracy or warranty any information in these plans.



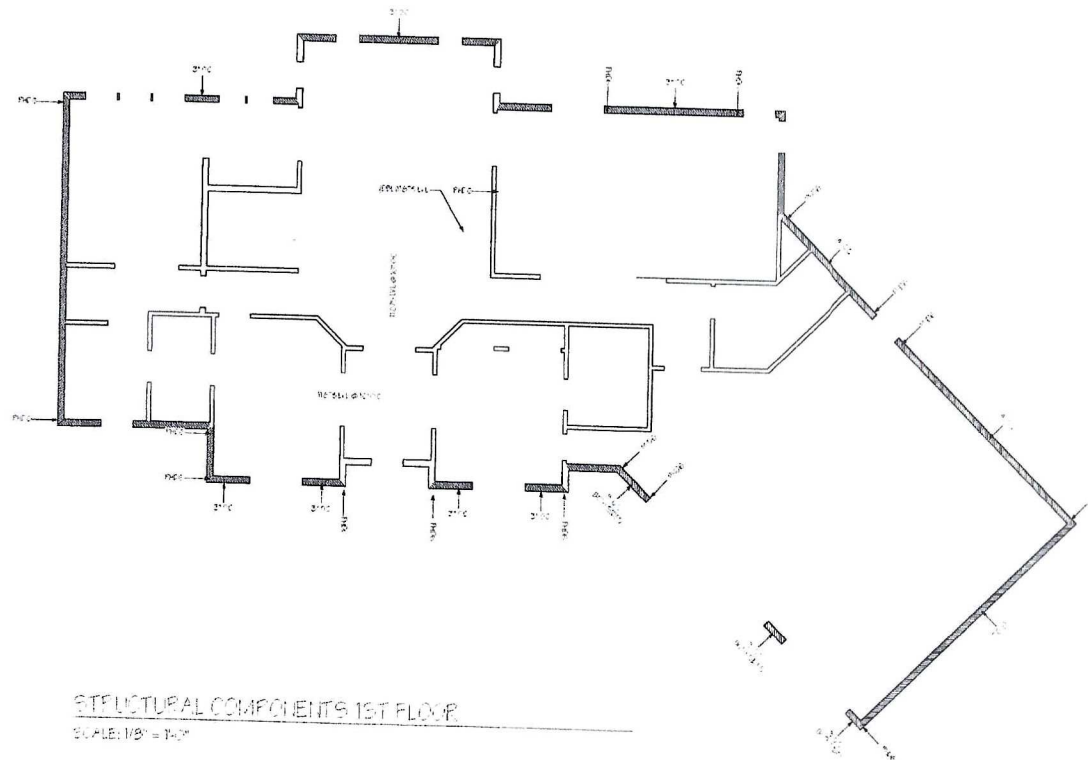
CROSS SECTION C'

SCALE: 1/8" = 1'-0"

*mc*



STRUCTURAL COMPONENTS 2ND FLOOR  
SCALE: 1/8" = 1'-0"



STRUCTURAL COMPONENTS 1ST FLOOR  
SCALE: 1/8" = 1'-0"

These floor plans and other information may not be accurate as to the final home construction and do not reflect changes or later modifications. All dimensions and square footage numbers shown are approximate and reflect unverified information from third parties. The University of Alaska does not guarantee the accuracy or warranty any information in these plans.

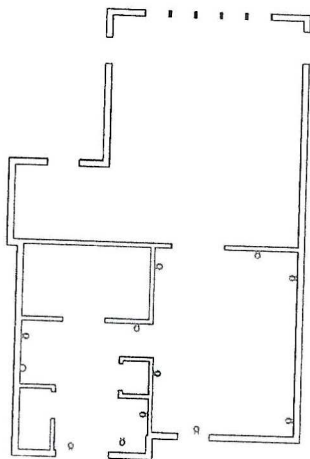
ALL  
2-2-2007

UNIVERSITY OF ALASKA  
SCHOOL OF ARCHITECTURE  
1000 UNIVERSITY AVENUE  
FAIRBANKS, ALASKA 99775-8100  
TEL: 907-475-1500  
FAX: 907-475-1501  
WWW.UAF.EDU

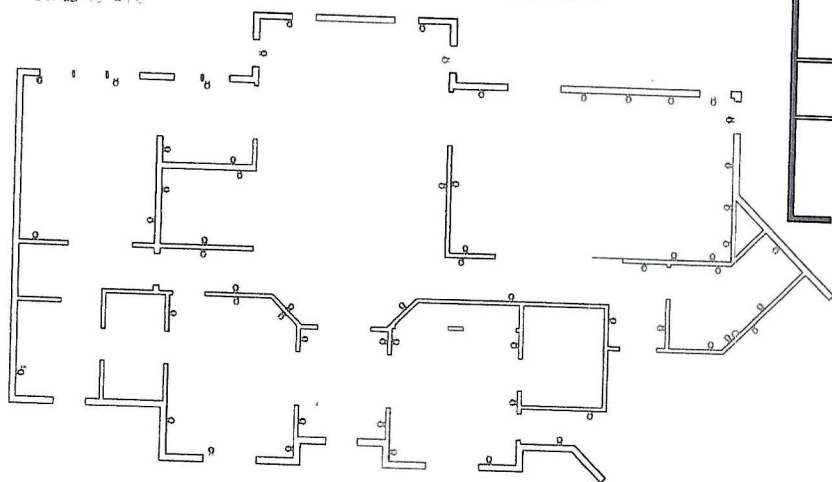
UNIVERSITY OF ALASKA  
SCHOOL OF ARCHITECTURE  
1000 UNIVERSITY AVENUE  
FAIRBANKS, ALASKA 99775-8100  
TEL: 907-475-1500  
FAX: 907-475-1501  
WWW.UAF.EDU

MARY CROXTON  
RIVERBEND SUBDIVISION LOT 14  
PALMER, AK 99654

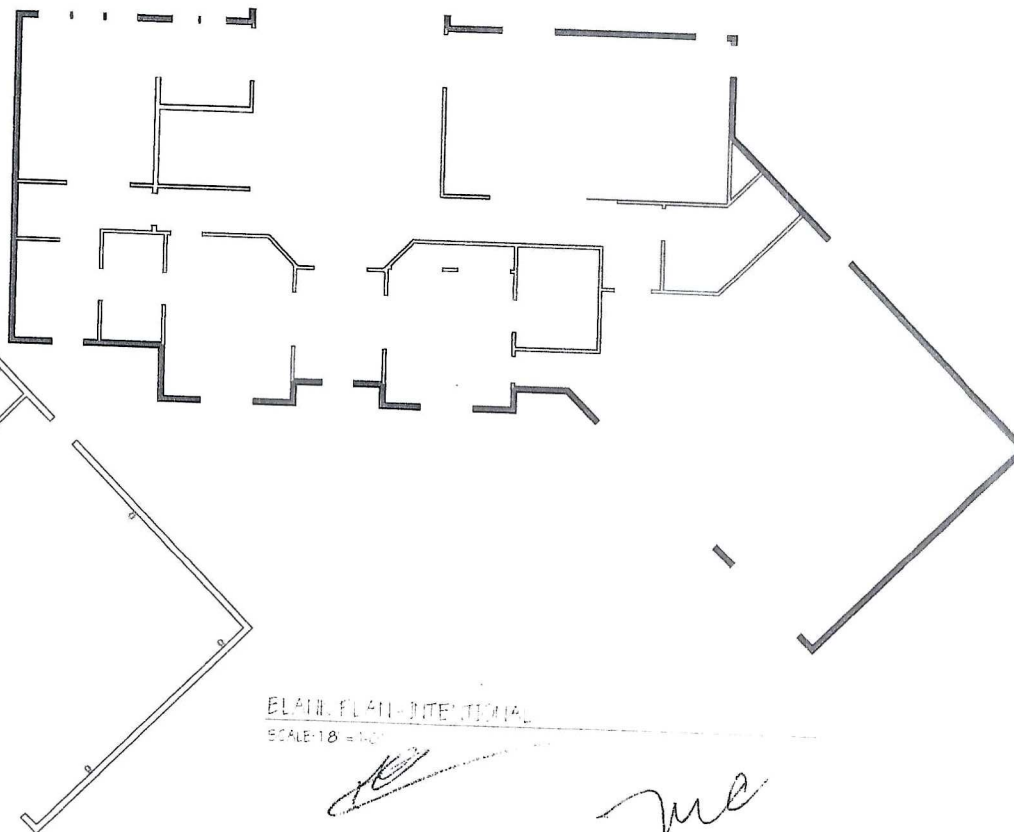




ELECTRICAL SECOND FLOOR  
SCALE: 1/8" = 1'-0"



ELECTRICAL FIRST FLOOR  
SCALE: 1/8" = 1'-0"



MAIN FLOOR - INTENTIONAL  
SCALE: 1/8" = 1'-0"

These floor plans and other information may not be accurate as to the final home construction and do not reflect changes or later modifications. All dimensions and square footage numbers shown are approximate and reflect unverified information from third parties. The University of Alaska does not guarantee the accuracy or warranty any information in these plans.

DATE: 02/20/2007

UNIVERSITY OF ALASKA  
SCHOOL OF ARCHITECTURE  
1000 UNIVERSITY AVENUE  
FAIRBANKS, ALASKA 99775-8000  
TEL: 907-475-1500  
FAX: 907-475-1501  
WWW.UA.ARCHITECTURE.EDU

UNIVERSITY OF ALASKA  
SCHOOL OF ARCHITECTURE  
1000 UNIVERSITY AVENUE  
FAIRBANKS, ALASKA 99775-8000  
TEL: 907-475-1500  
FAX: 907-475-1501  
WWW.UA.ARCHITECTURE.EDU

UNIVERSITY OF ALASKA  
SCHOOL OF ARCHITECTURE  
1000 UNIVERSITY AVENUE  
FAIRBANKS, ALASKA 99775-8000  
TEL: 907-475-1500  
FAX: 907-475-1501  
WWW.UA.ARCHITECTURE.EDU

MARY CROXTON  
RIVERBEND SUBDIVISION LOT 14  
PALMER, AK 99654