

Future Back Leadership



Presented by **Beena Sukumaran**
Candidate for the Chancellor, University of Alaska Fairbanks

A Vision for Global Leadership in Arctic Research and Student Success

ACADEMIC BACKGROUND



**Doctor of
Philosophy**

Civil Engineering
Purdue University



**Master of
Science**

Civil Engineering
Auburn University



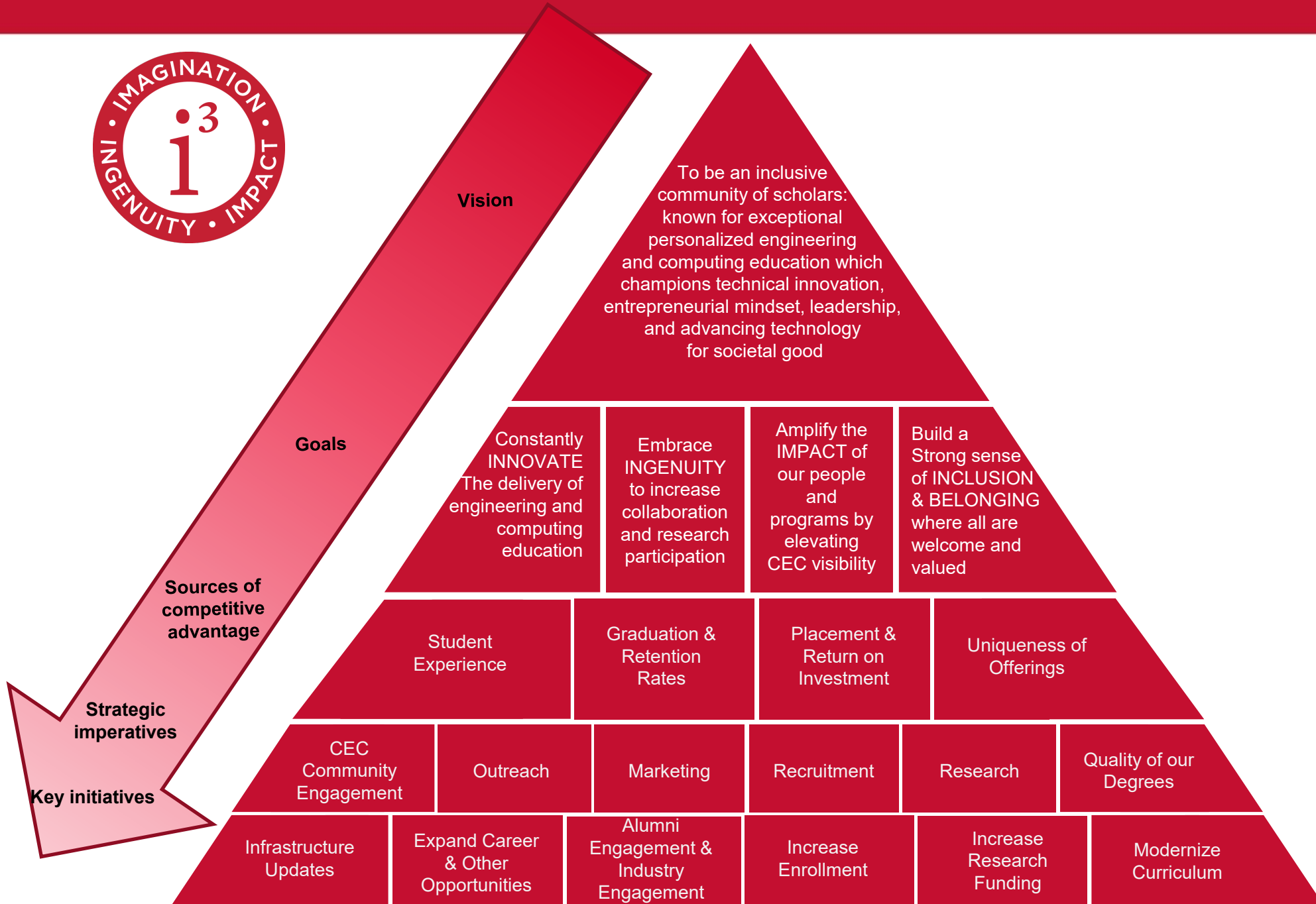
**Bachelor of
Technology**

Civil Engineering
Trivandrum, India

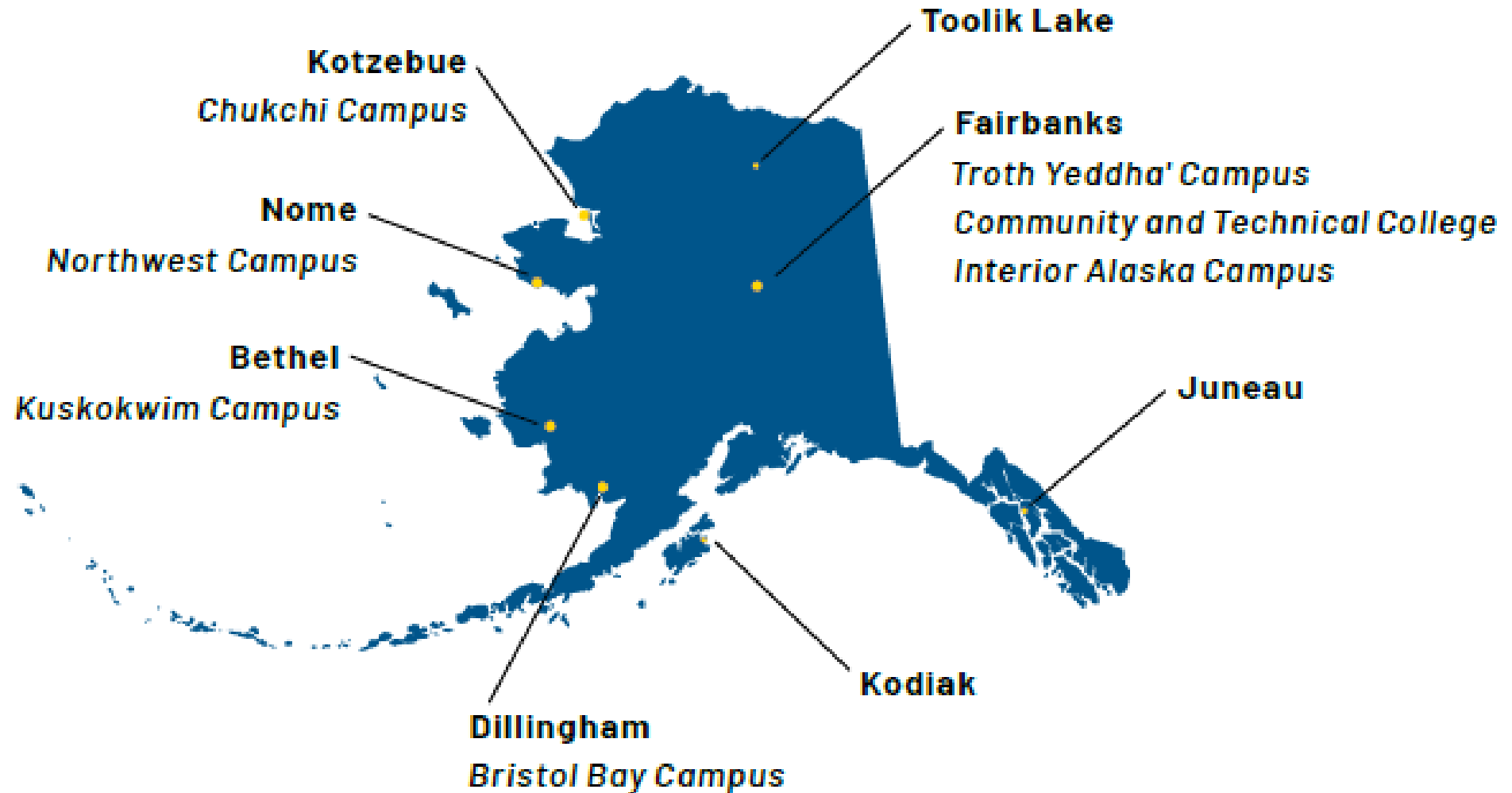
CAREER AT A GLANCE

-  **Dean (Current), College of Engineering and Computing,** Miami University.
-  **VP for Research:** Rowan University
-  **President's Fellow of DEIB:** Rowan University
-  **Department Chair/Head of Civil & Environmental Engineering:** Rowan University
-  **Industry Experience:** Professional practice at Amoco and Norwegian Geotechnical Institute.





Vision: Leaping Forward



PREMIER STUDENT DESTINATION

Land, Sea, and Space Grant Institution

Marketing the unique value of America's only Arctic Research University.

- ❄️ Study climate change where it happens.
- 👥 Strengthen the Alaska Nanooks brand and nurture athletic talent.
- 👥 Highlight rich traditions of Indigenous people.
- 🌍 Grow domestic and international student body.
- 📊 Premier research institution, where you have the opportunity to study/work with world class researchers



FUTURE PROOF CURRICULUM



AI Integration

Infusing Artificial Intelligence across all degree offerings to prepare students for the future workforce.



Holistic Success

Ensuring every student thrives through experiential learning, wellness support, and mentorship.



Workforce Alignment

Developing degree programs specifically aligned with Alaska's critical workforce needs.

UAF: RESEARCH POWERHOUSE



\$220M+ Funding

Record-breaking annual research funding driven by elite research institutes that cross all academic units.



Global Leader

Premier destination for Arctic systems, defense, and climate change research.



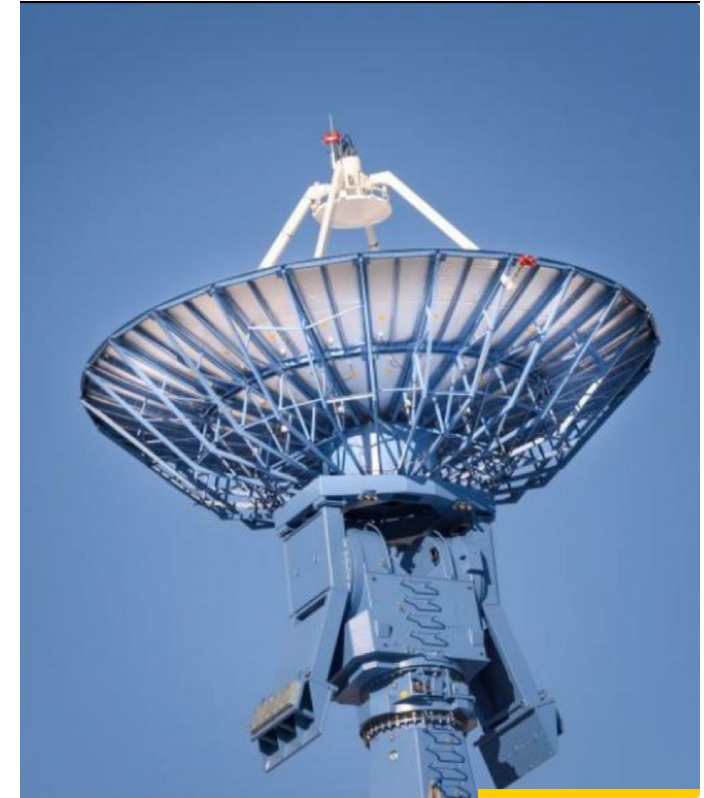
Collaboration

Fostering interdisciplinary work across colleges and federal/state agencies.

ACHIEVING R1 STATUS

Research Excellence

- ✓ **Invest in strategic clusters:** Recruit and retain top-tier research talent.
- ✓ **Accelerate PhD Pathways:** Explore models like Purdue's B2D7 (Bachelor to Doctorate in 7 years).
- ✓ **Innovation Center:** Accelerate research to market pathways.



ENSURING FINANCIAL HEALTH



Diversify Revenue

Reduce reliance on traditional funding by expanding fundraising from alumni and corporate partners, foundation grants, and innovative revenue streams.



Digital Transformation

Improve efficiencies through data-driven operations, and constant feedback.

CULTURE OF CARE

UAF will be a hub for community partnership and shared spaces.

 Highlight creative works and Indigenous art.

 Partner with communities for research.

 Host regional K12 community events.



Questions & Discussion

Thank you for the opportunity to share this vision for UAF.

Beena Sukumaran | Candidate for Chancellor