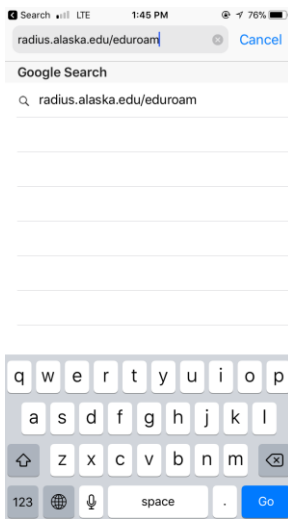




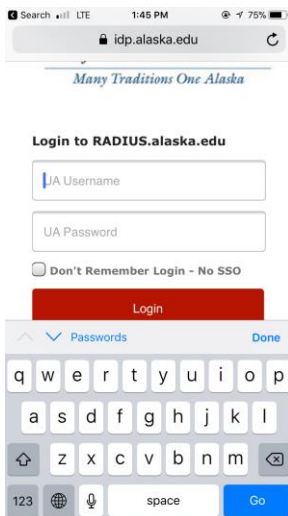
## Connecting to Eduroam (iOS)

This guide will help you connect to the eduroam Wi-Fi network.

### Use Safari to go to [radius.alaska.edu/eduroam](https://radius.alaska.edu/eduroam)

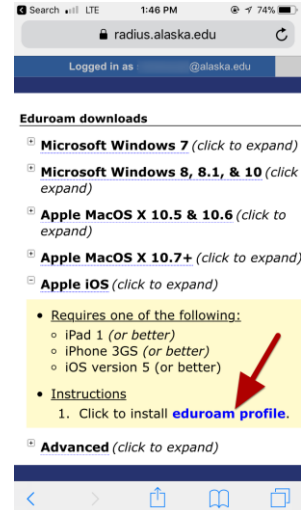


### Login using your UA Username and password

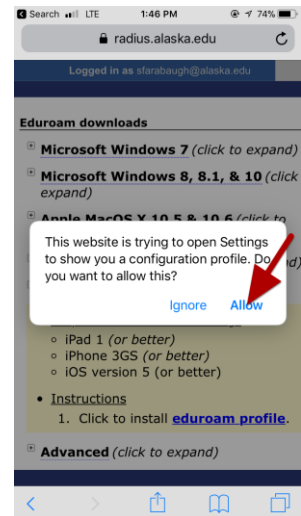


Your **UA Username** is your email without the "@alaska.edu".

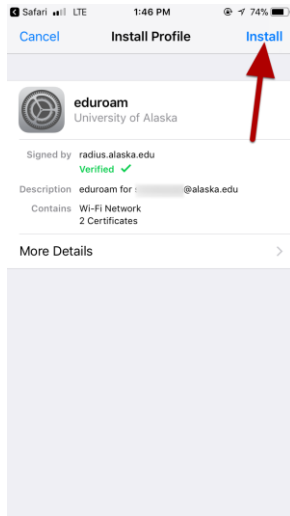
### Tap the "eduroam profile" link



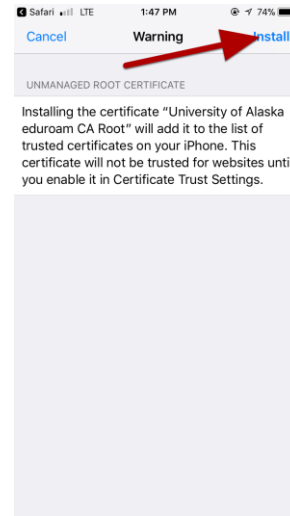
### Select "Allow" to continue configuring eduroam



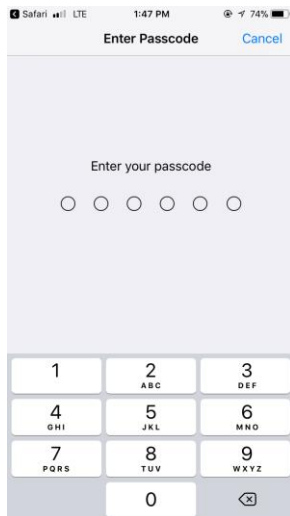
### Select "Install" in the top right



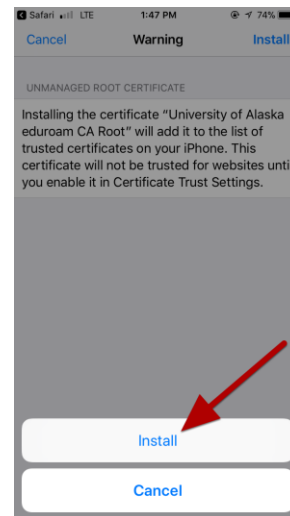
### Tap "Install"



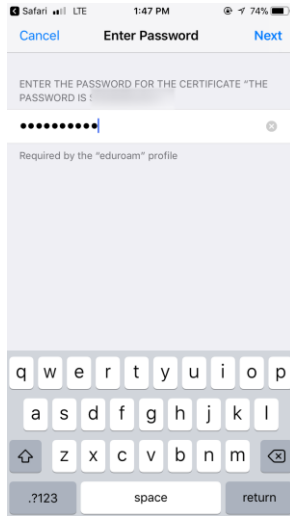
### Enter your device's passcode



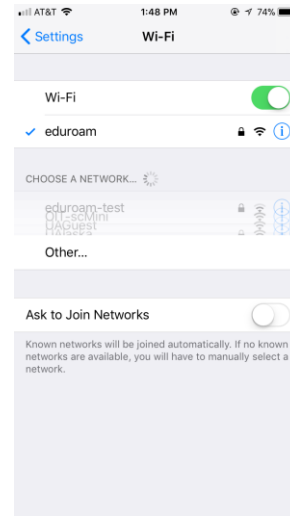
### Tap "Install"



**The password for the certificate is your UA Username**



**Go to the Wi-Fi menu in the Settings app to make sure that you are connected to eduroam**



Your UA Username is your email without the "@alaska.edu".

**You have now configured the eduroam Wi-Fi network, select "Done" to exit the installer**

