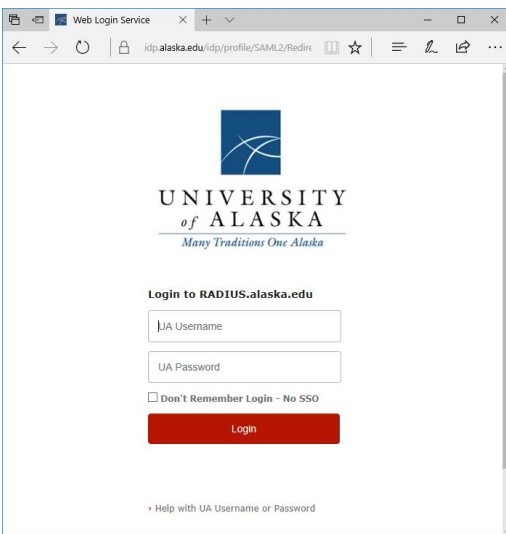




Connecting to Eduroam (Windows 10)

This guide will help you connect to the **Eduroam** Wi-Fi network.

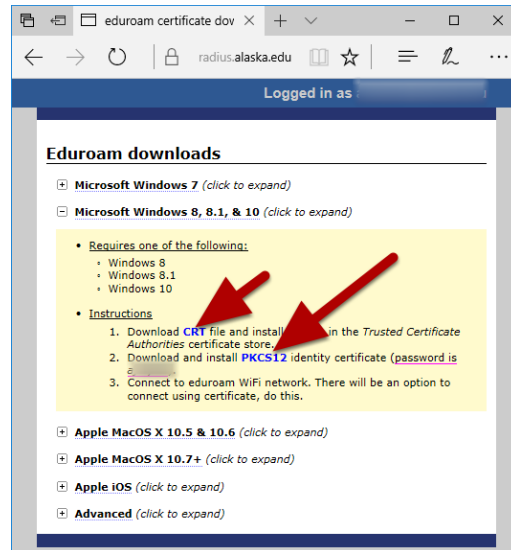
Use a browser to go to radius.alaska.edu/eduroam



This will present a login screen, you can login using your UA username and password.

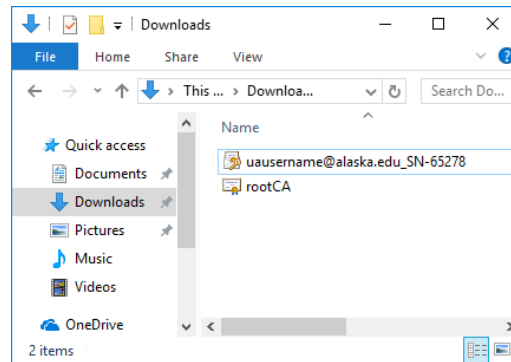
Download the **CRT** and **PKCS12**

certificates



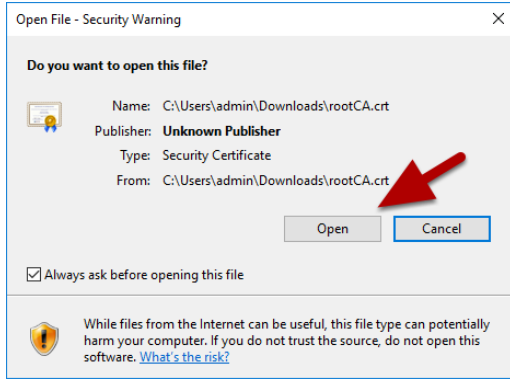
These are the two certificates that your computer will use to connect to the **Eduroam** Wi-Fi network.

Install the certificates

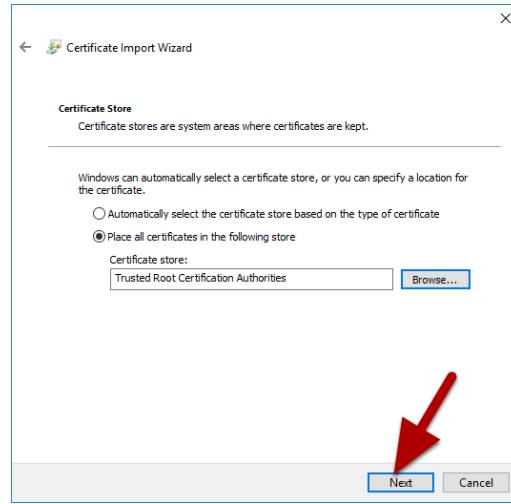
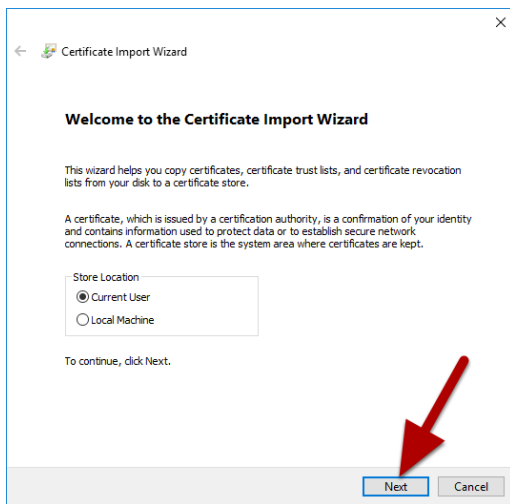
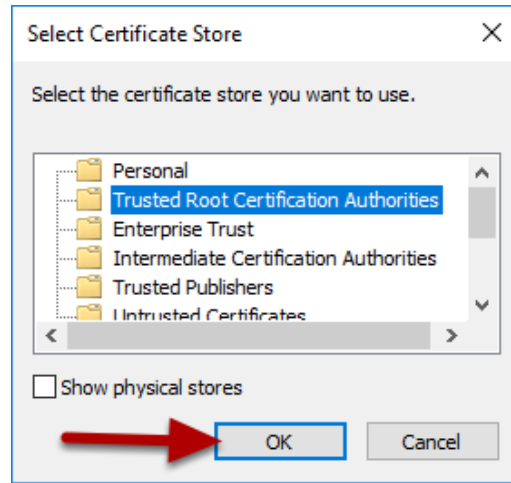


You can install the certificates by double clicking the certificates in your downloads folder.

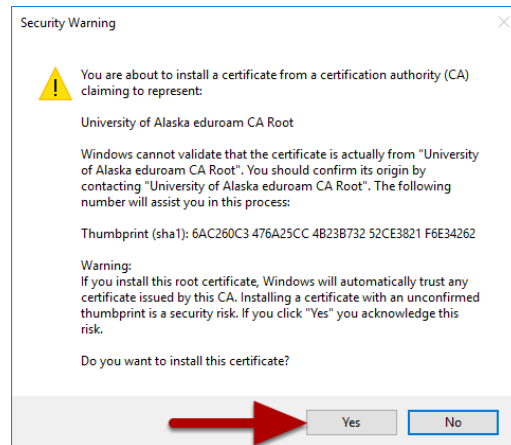
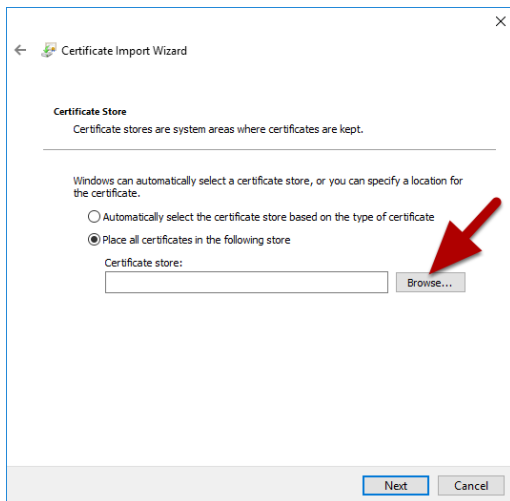
CRT certificate information



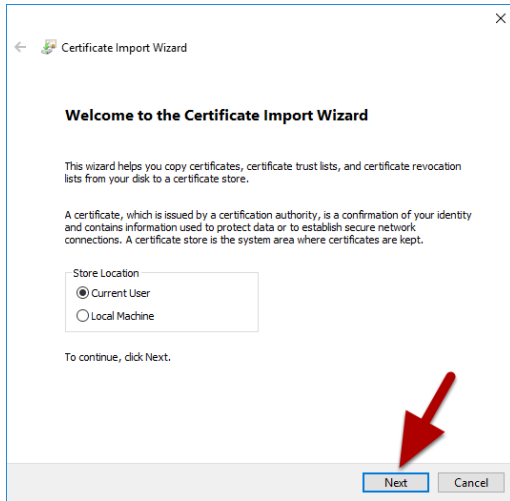
The CRT certificate downloads as rootCA.



The certificate needs to be placed in the "Trusted Root Certification Authorities" folder.

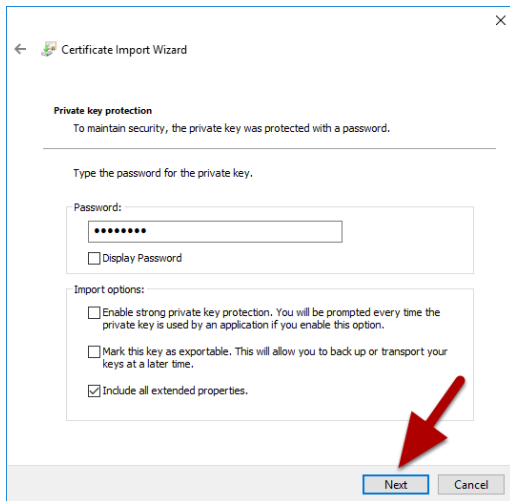


PKCS12 certificate information

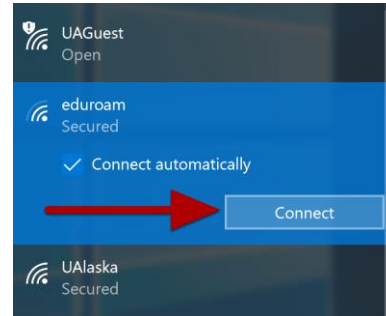


The PKCS12 certificate downloads with your username in the title and can be installed using the automatic settings. The password to the certificate is your **UA username**

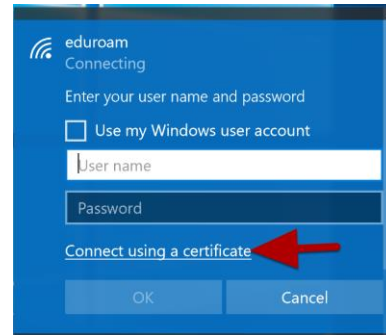
The password is your UA username



Now that we have the certificates in place, select the Wi-Fi icon in your taskbar and select the eduroam network, Click "Connect".



Select "Connect using a certificate" instead of providing a User Name and Password



You are now connected to the **Eduroam** Wi-Fi network