

Nuiqsut – Univ. of AK Workshop

The Alaska Adapting to Environmental Change Project

April 9 & 10, 2018



Your visitors



Gary Kofinas
(Project Leader)
Research Scientist
UAF - Institute of Arctic Biology
gary.kofinas@alaska.edu



Todd Brinkman
Assist. Prof of
Wildlife Management
UAF – Biology
tjbrinkman@alaska.edu



Eugenie Euskirchen
Research Asso. Professor
Ecology
UAF Biology
seeuskirchen@alaska.edu



Jiake Zhou
PhD student
UAF Biology and Wildlife
jzhou2@alaska.edu>



Barbara Johnson
PhD student
UAF – Natural Resources
bajohnson20@alaska.edu

U of Alaska Researchers

Faculty & Research Professionals

- Chris Arp
- Matthew Berman
- Todd Brinkman
- Toby Carman
- Eugenie Euskirchen
- Anna Liljedahl
- Mark Lindberg
- Gary Kofinas
- Naomi O'Neal
- Jennifer Schmidt
- Ken Tape
- Sarah Trainor
- Lisa Wirth
- Mark Wifli

Graduate Students

- Berill Blair
- Jiake Zhou
- Matt Spru
- Jason Leppi
- Taylor Stinchcomb
- Tracie Curry

Others

- Vladimir Alexeev
- John Walsh
- Santosh Panda
- Nathan Kettle
- Nicole Misarti
- Skip Walker
- and. . .

Objectives of this workshop:

- Report on the activities and findings of the study
- Hear your thoughts on the findings
- Explore how the University of Alaska can be helpful to Nuiqsut in the future
- Identify what studies you feel are needed in the future
- Talk about how studies should be conducted

Before we start, we want to recognize that:

- Nuiqsut is unique among AK communities
 - On the frontlines of oil & gas development AND climate change
 - Experiencing a parade of researchers doing many studies
 - Great demands – interviews and meetings
- Researchers need to report back to communities and get your thoughts on our work
- Communication between community residents and scientists is not easy.

Funding for project from

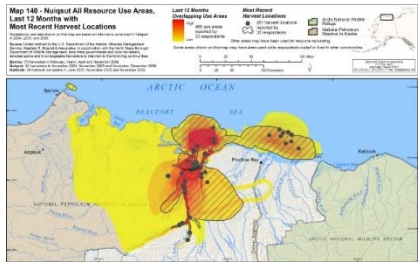
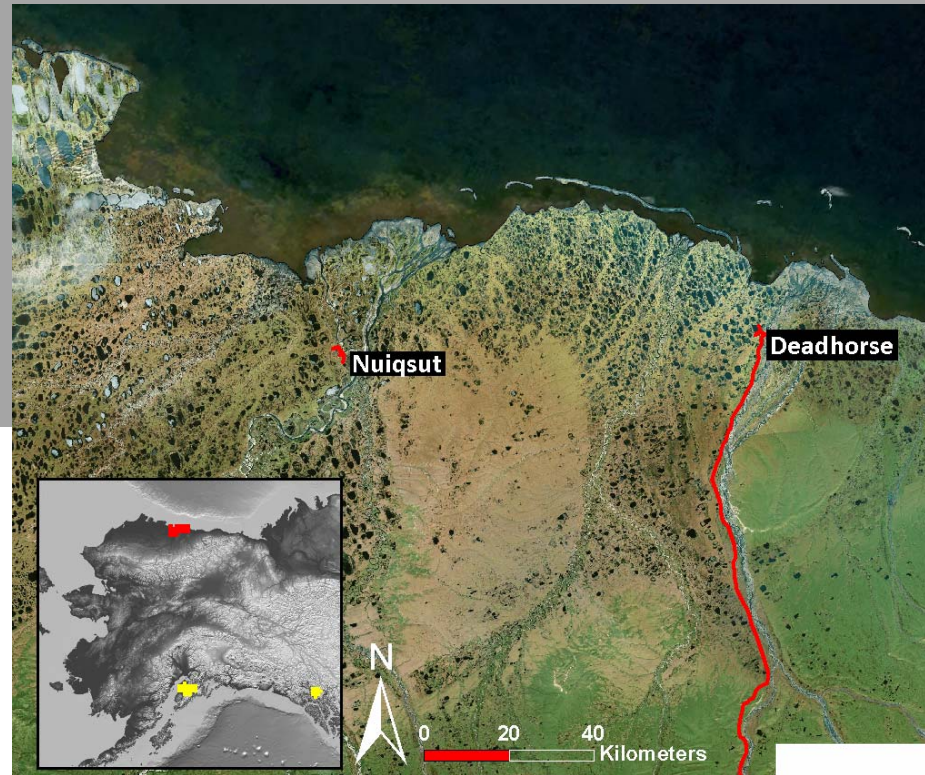


National Science Foundation

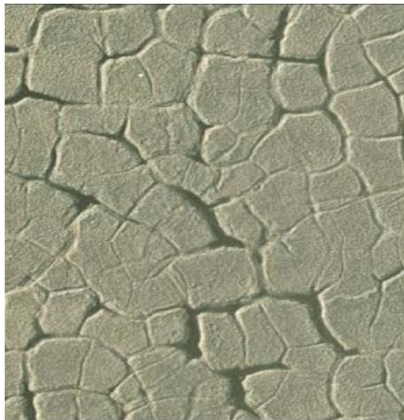
**Match funding
from State of
Alaska**



Northern Test Case: Study Area



Northern Test Case Questions



1) How is the landscape changing?



2) How are changes affecting ecosystems?



3) What do communities need to adapt?

Parts of the study

- Climate
 - Permafrost and Hydrology (lakes, rivers)
 - Plants
 - Fish and Wildlife
 - Humans
-
- Research - Science & Local knowledge
 - Education – Trapper School and UA undergrad and graduate students