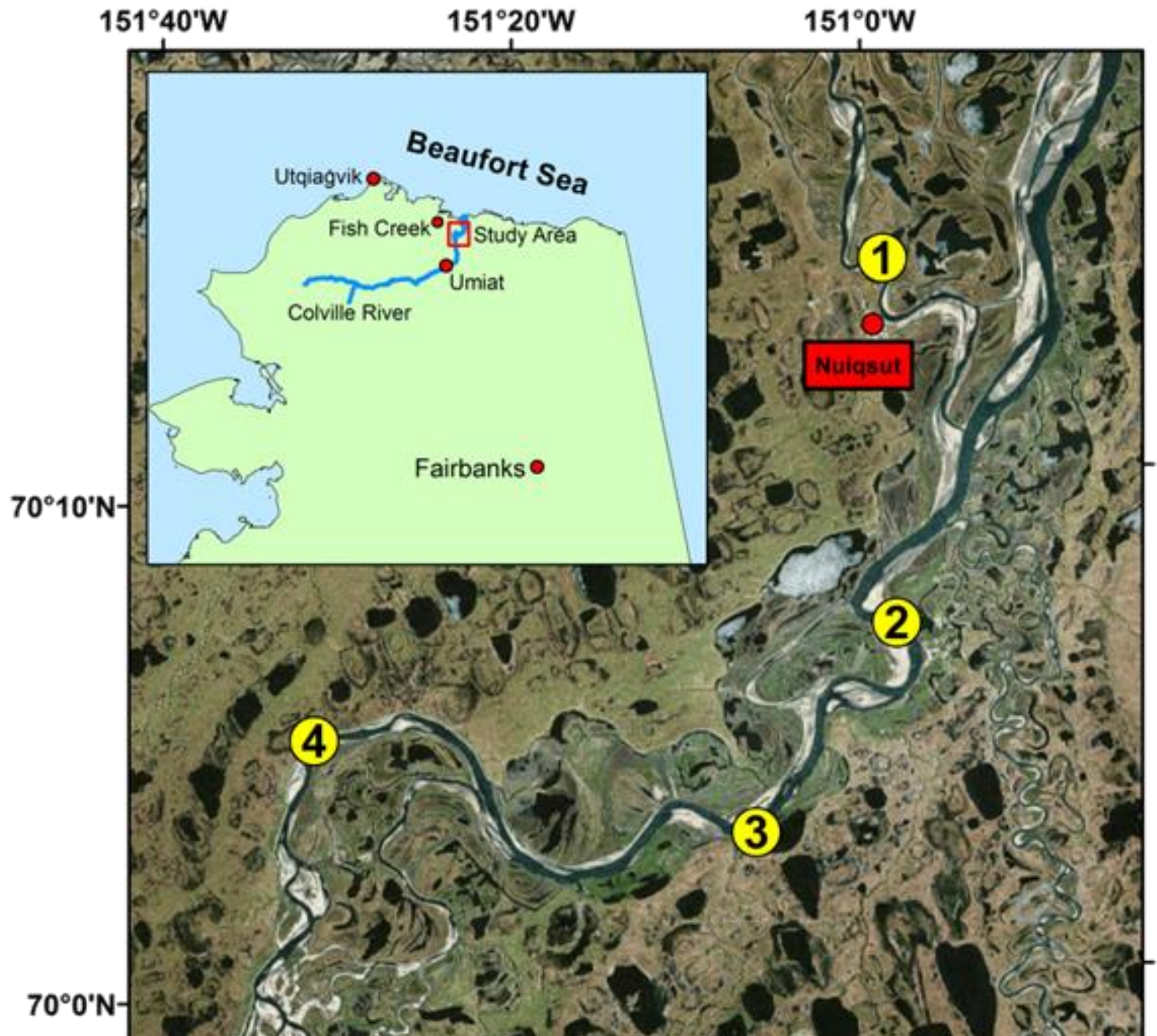


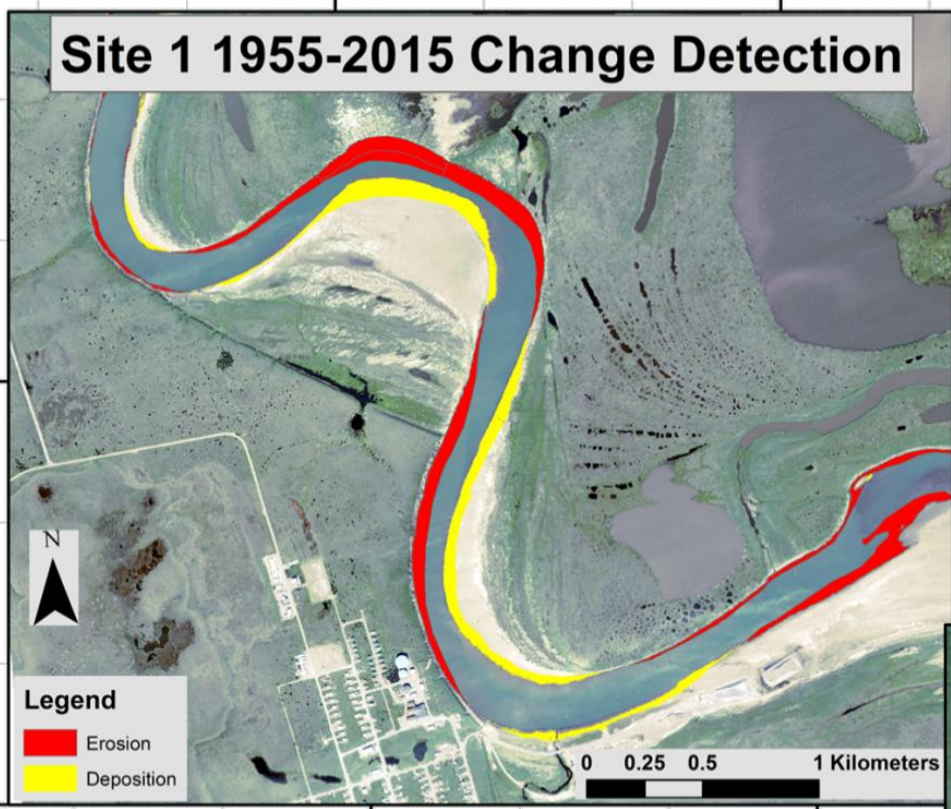
# **Colville River Erosion**

**How might it impact Nuiqsut?**

# Colville River Study Area

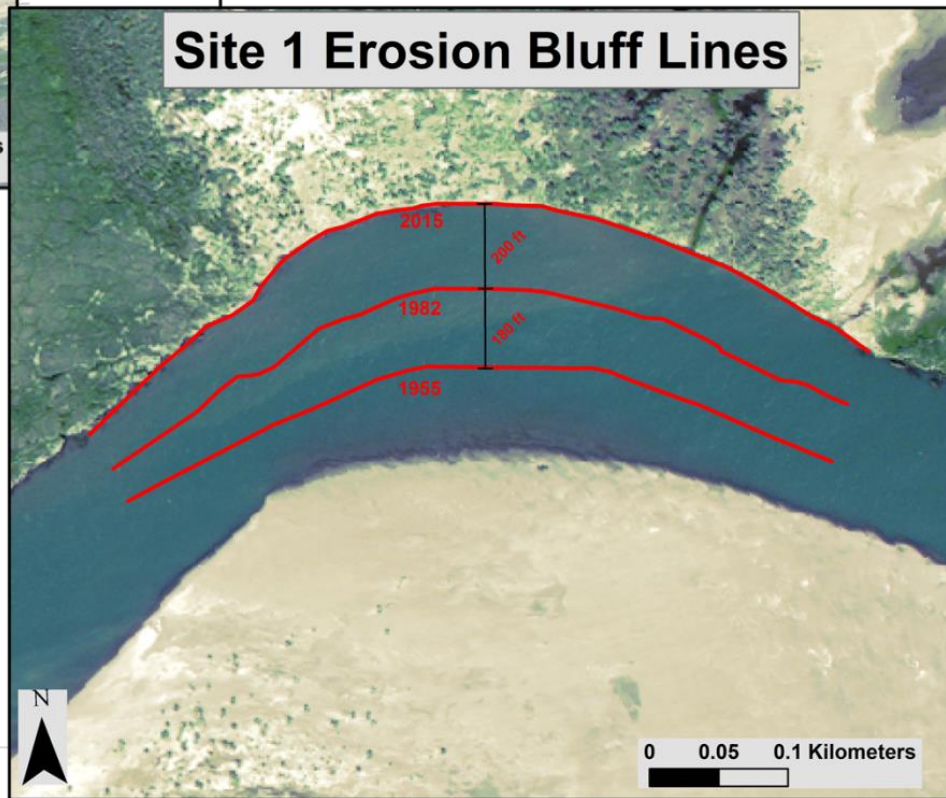


# Site 1 1955-2015 Change Detection



151°0'0"W

# Site 1 Erosion Bluff Lines





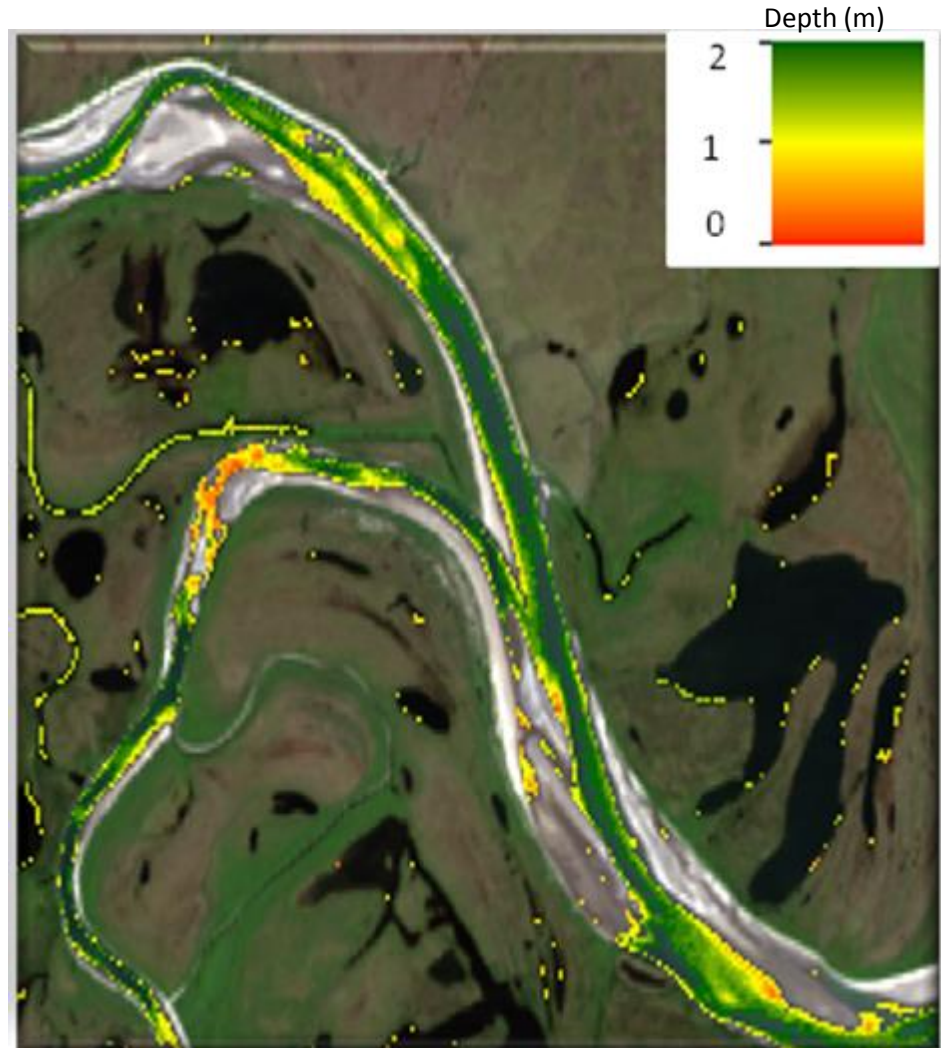
# River Erosion Rates

- Erosion is speeding up in recent in recent decades
- Erosion rates averaged between 3 and 11 feet per year
- Site 4 eroded 88 million cubic feet of land between 1955 and 2015. Equivalent to the size of the Great Pyramid in Egypt.
- Warming of arctic seems to be the cause
- Erosion is likely to increase into the future

# Shallow Water on the Colville

**What we are doing about it:**

- We are working on creating maps that show areas of shallow water
- Help Nuiqsut residents navigate a rapidly changing river



# Questions for you

- Is any of this useful?
- What water depth causes problems for you?
- Would you be interested in telling us where you consistently see problems?
- What other river information would be useful?