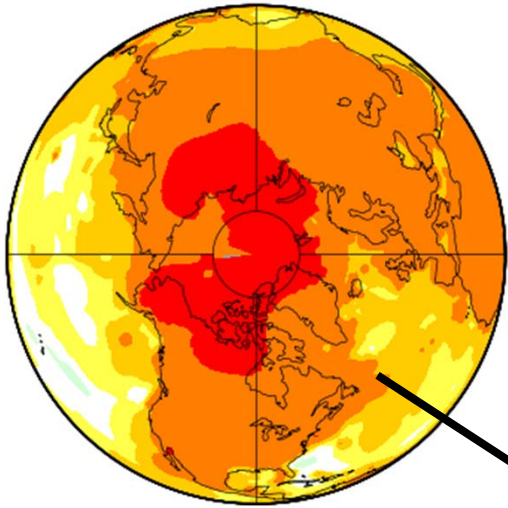


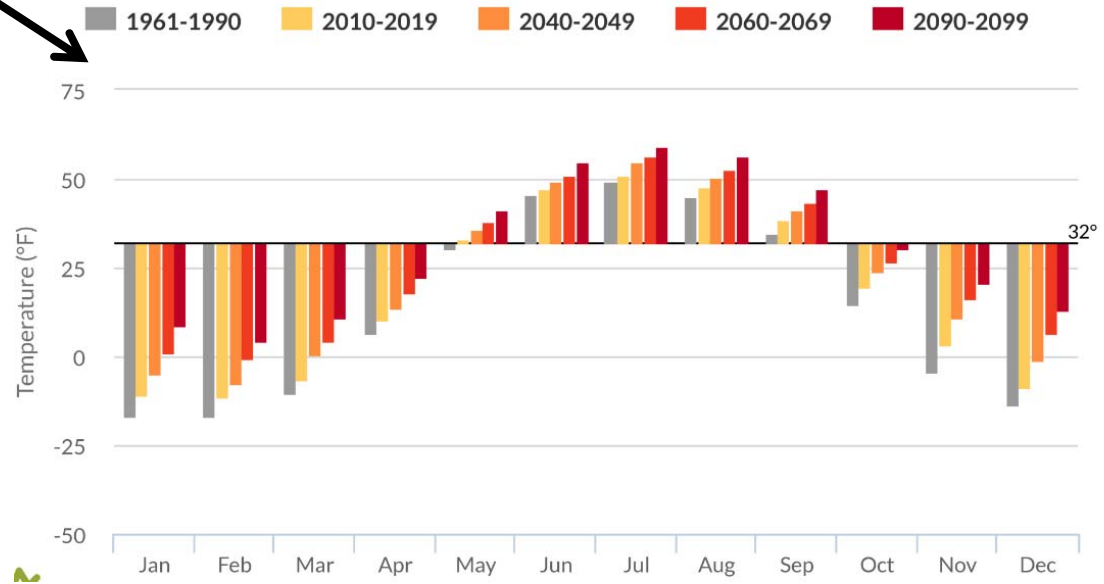
Study of Climate, hydrology, and fish



Nuiqsut

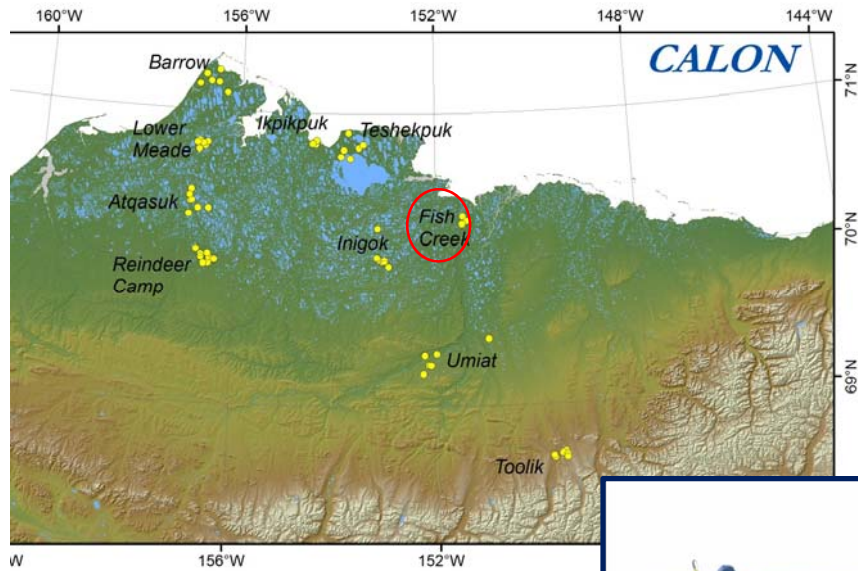
Average Monthly Temperature for Nuiqsut, Alaska

Historical CRU 3.2 and 5-Model Projected Average at 10min resolution, High-Range Emissions (RCP 8.5)



Crea Creek Monitoring Program

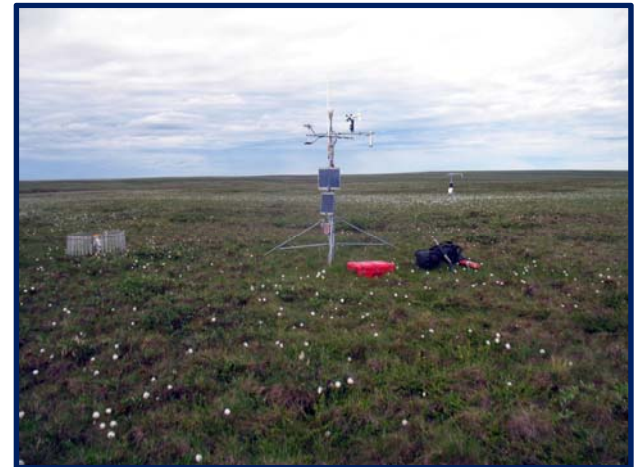
part of the [Circumarctic Lake Observation Network](#)



River gauging
BLM, USGS, UAF



Fish sampling and
tagging studies
BLM, UAF, ADFG



Climate & permafrost
USGS

And ...



Lake hydrology & quality
BLM, UAF

Snow surveys & ice thickness
BLM, UAF, GW Scientific



Beaded stream discharge &
water quality
BLM, UAF



We produced LIDAR data which will help to study past and future changes in the landscape around Nuiqsut

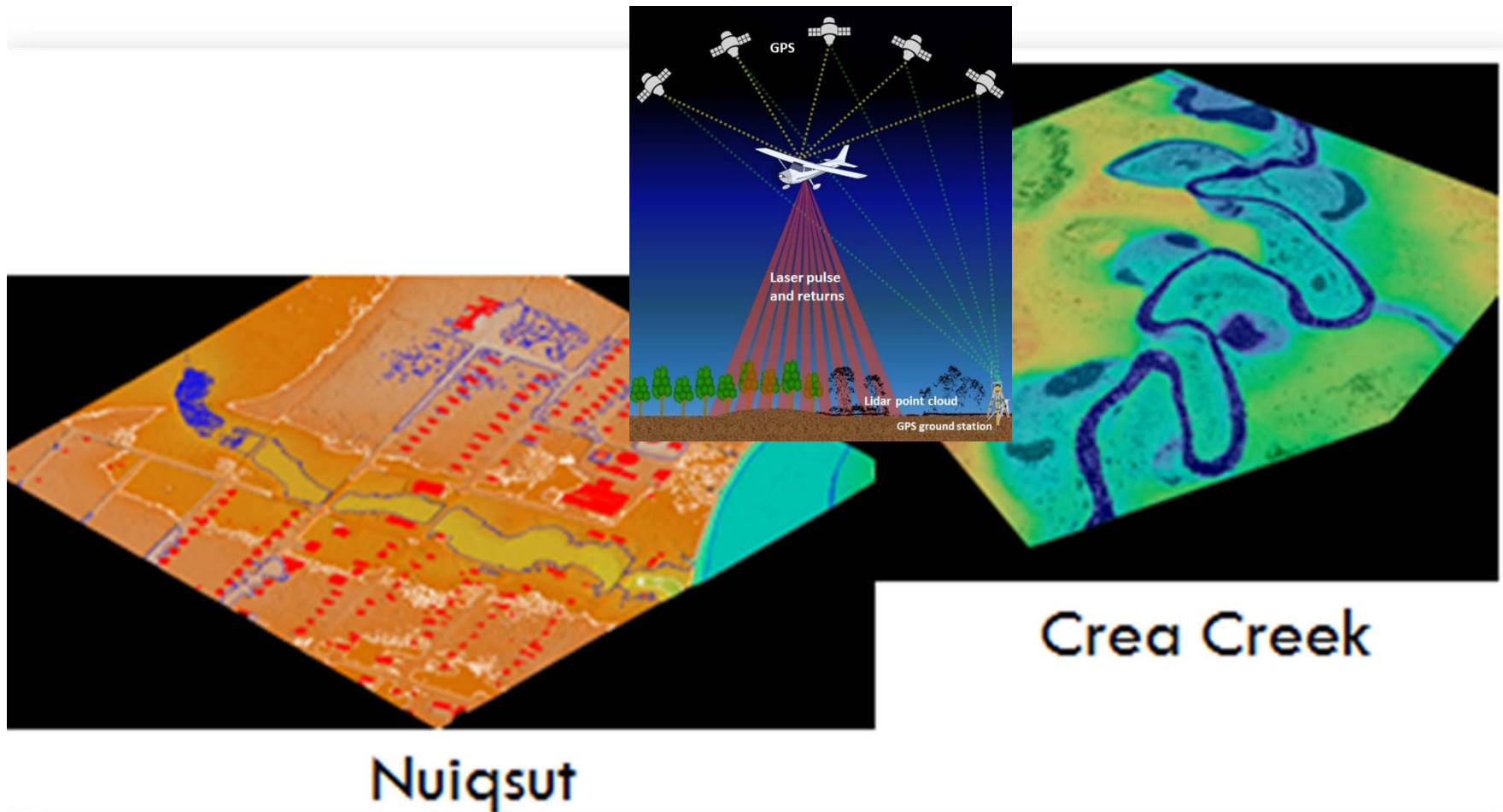
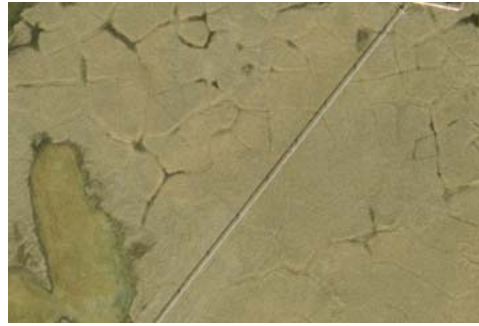


Photo Analysis

1990



2001

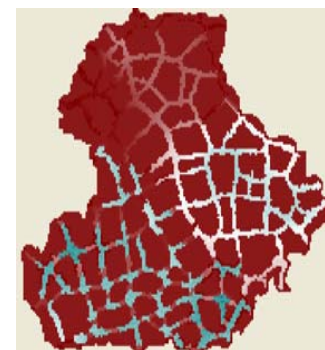
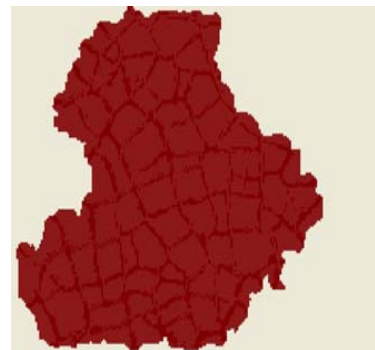


2010



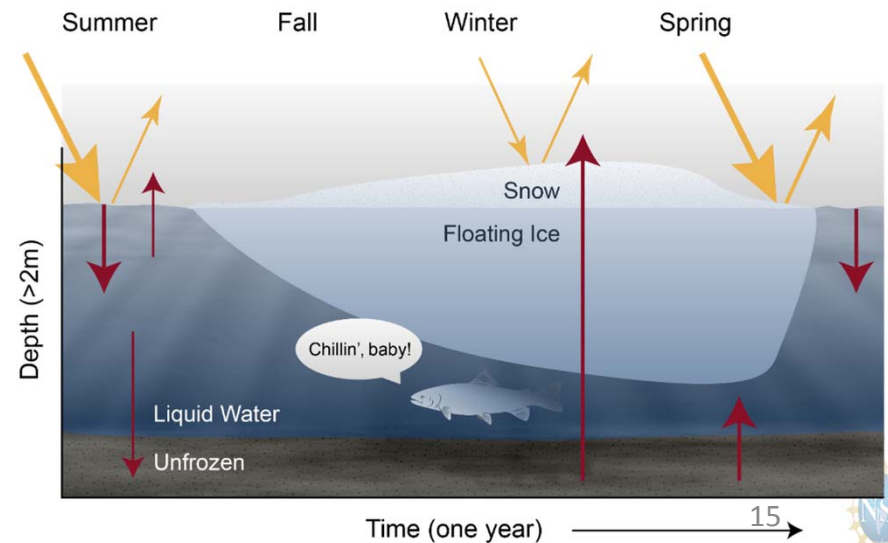
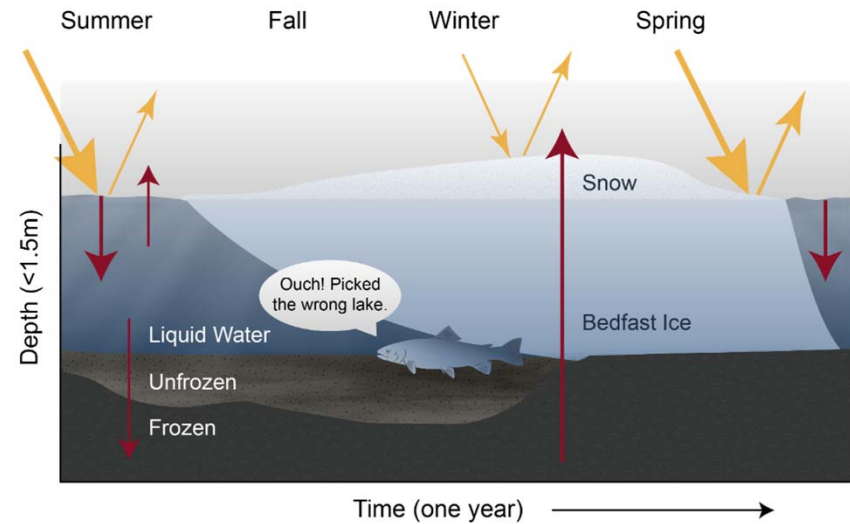
Area in Prudhoe Bay Fields

Computer Modeling



Connected and disconnected troughs

Study of Lakes and Overwintering Fish



Hydro-Fish Studies

Arctic Grayling, Fish Cr



Broad Whitefish, Colville River

