

UAA Master Plan Update

Draft Master Plan

June 2013

ECI/Hyer Architecture

ZGF Architects

CRW Engineering

Corvus Design Landscape Architecture

Kittelson & Associates

Ira Fink & Associates

Key Themes

Consolidation & Density

Renewal & Rejuvenation

Research & Innovation

Collaboration

Alaskan Native Identity

Vehicular & Pedestrian Circulation

International Emphasis

Student Life

Community Connections

Alumni Engagement

Academic Pedagogy

E-Learning

Sustainability

Intercultural

UAA Properties - Overview

UAA Chugiak Eagle River
Campus Not Shown

UAA 7th & A

UAA Aviation Technology

Bragaw Office Buildings :: Leased

UAA Main Campus

UAA University Center

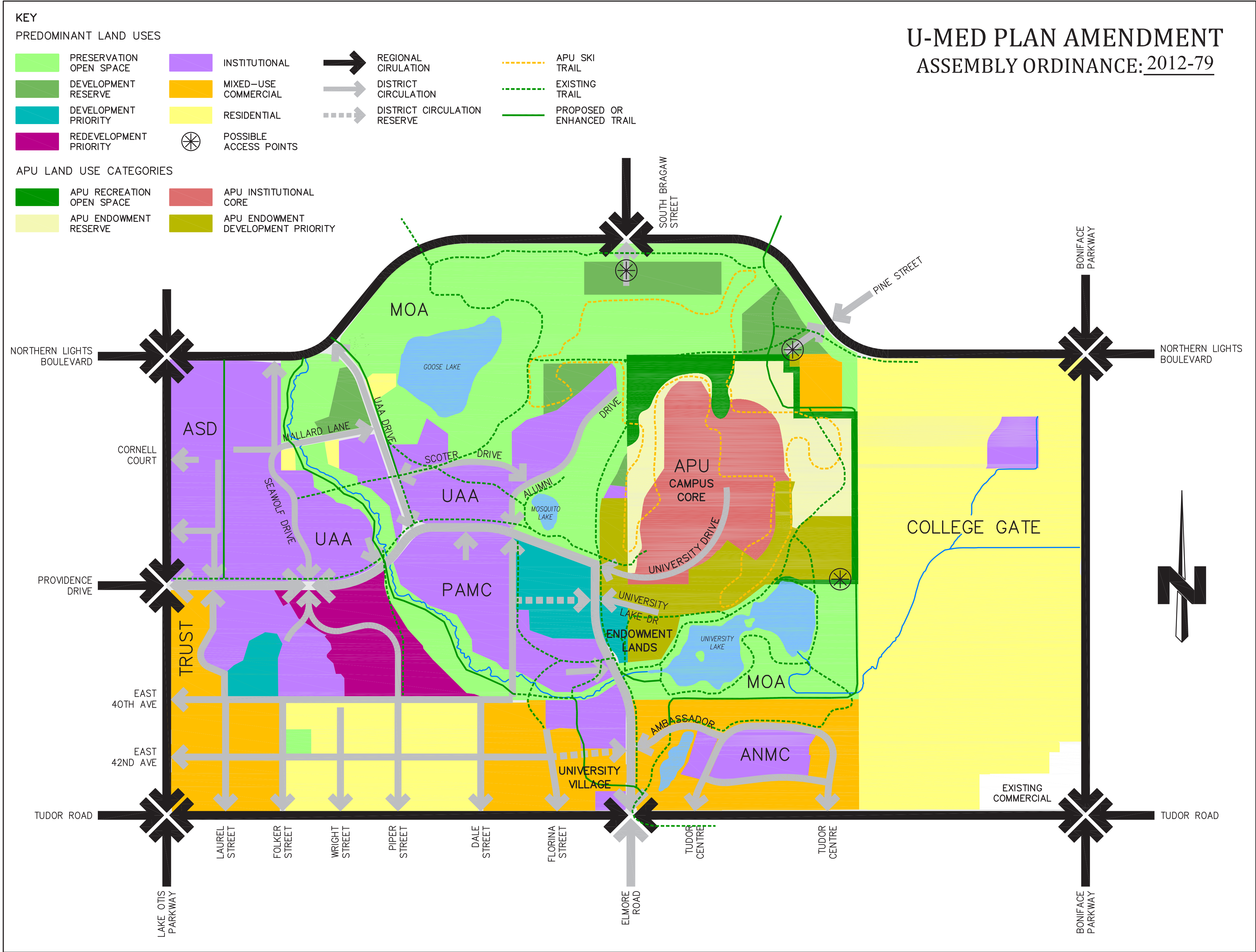
UAA Diplomacy

- Main Campus Area - 387 Acres
- Type A Wetlands - 8.18% - 32 Acres
- Type B Wetlands - 6.49% - 25 Acres
- Type C Wetlands - 10.24% - 40 Acres
- Leased to ASD - 3.35% - 13 Acres

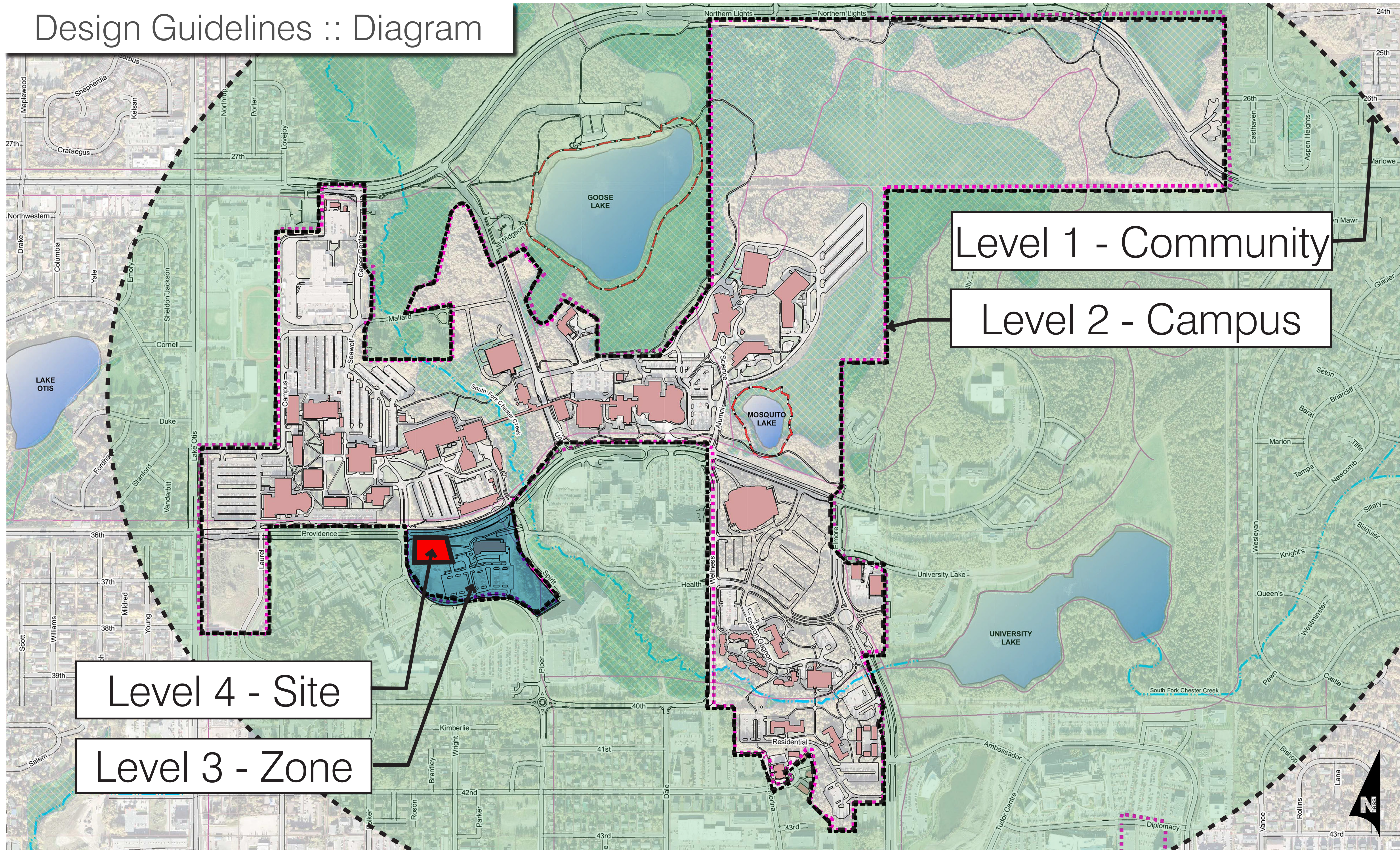
Note :: Wetland acres based on GIS mapping

N

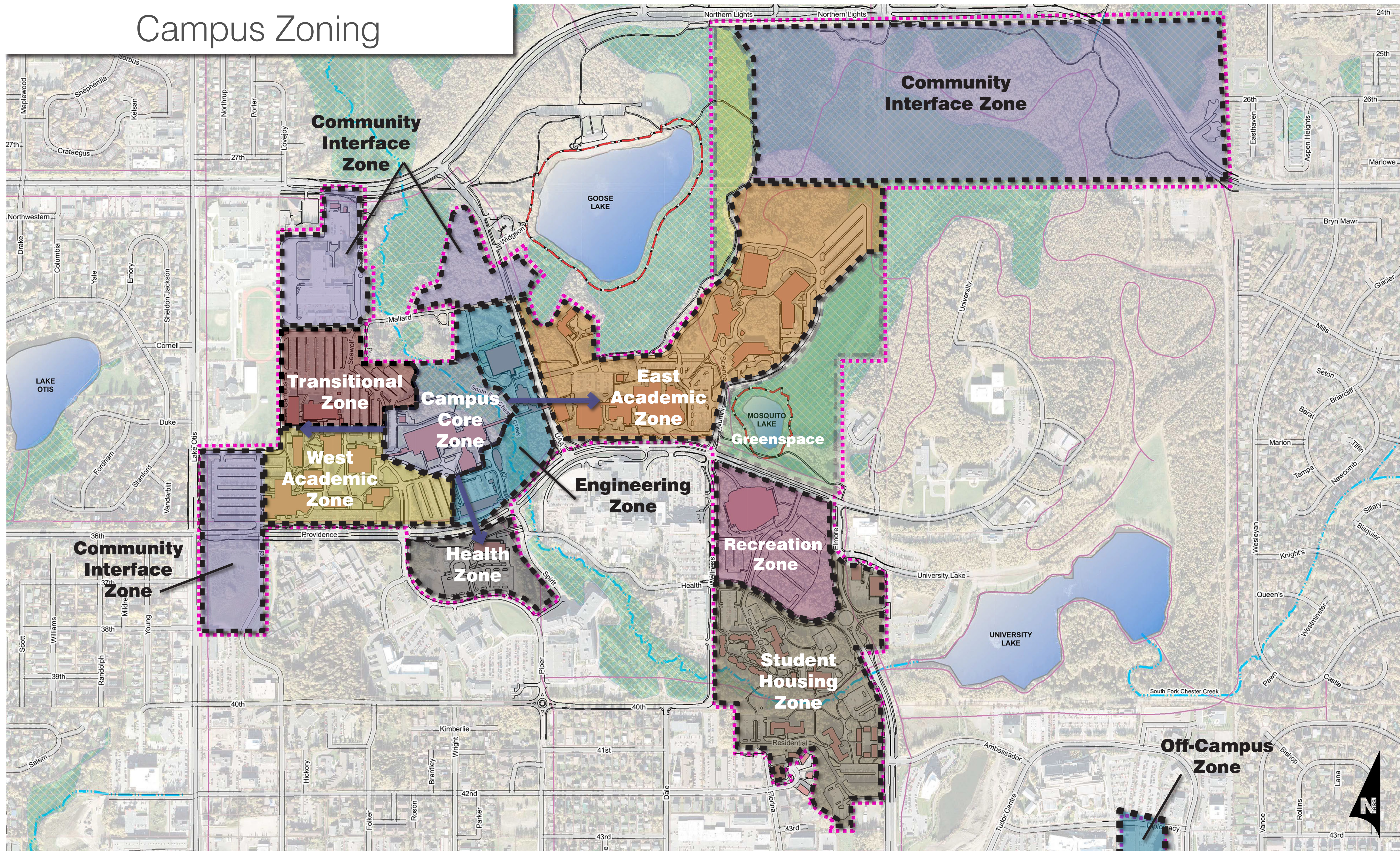
U-MED District



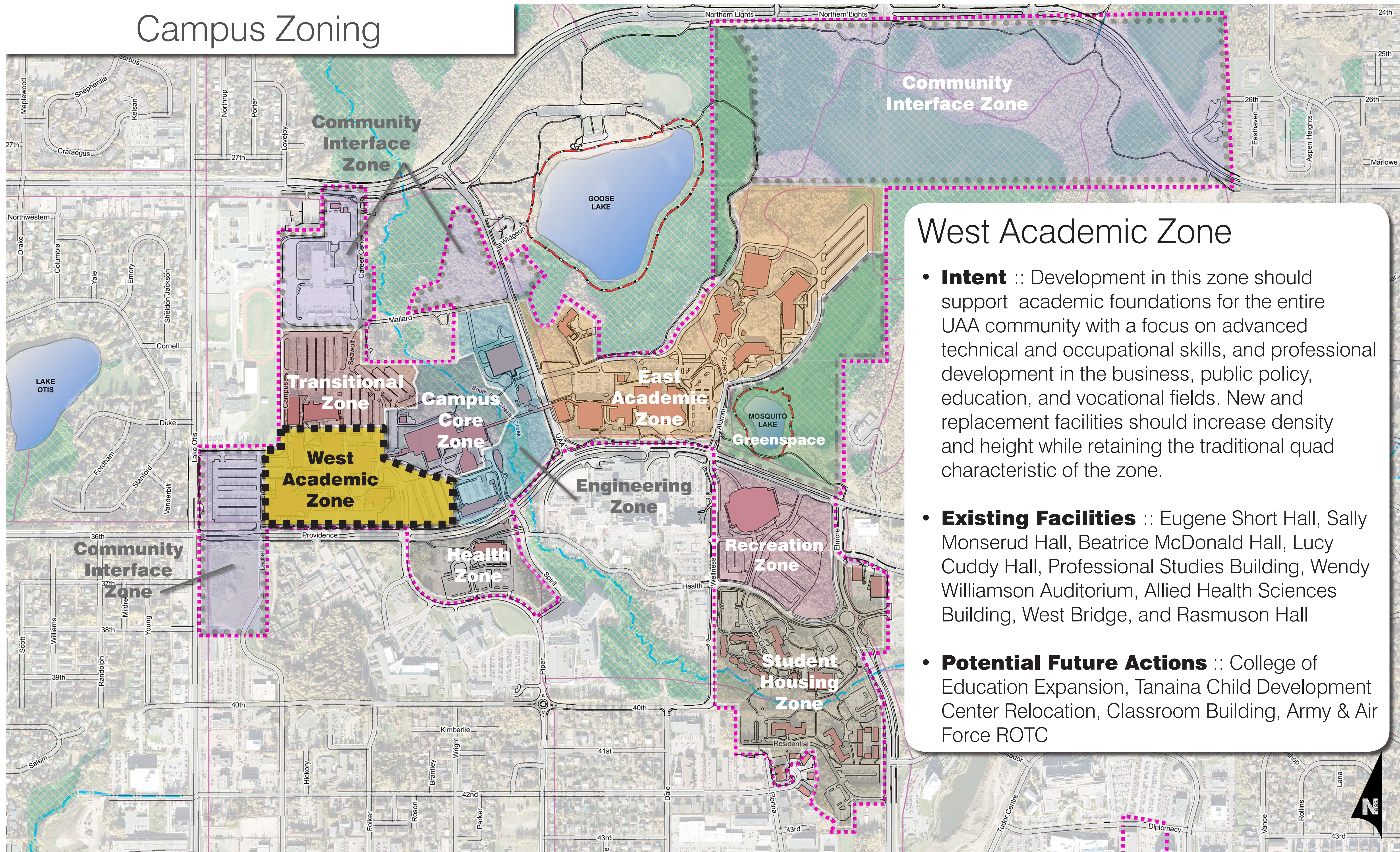
Design Guidelines :: Diagram



Campus Zoning

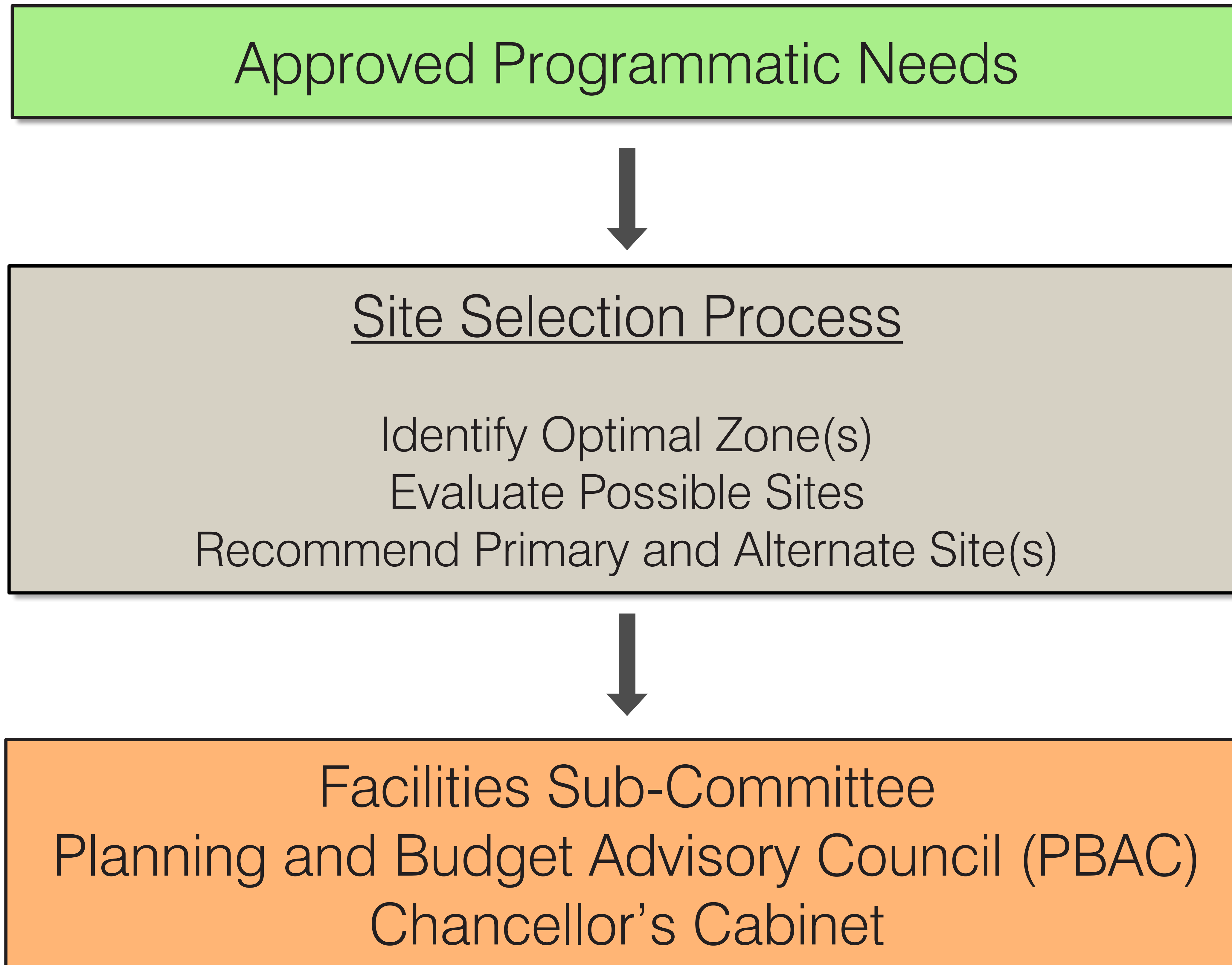


Campus Zoning



West Academic Zone

- **Intent** :: Development in this zone should support academic foundations for the entire UAA community with a focus on advanced technical and occupational skills, and professional development in the business, public policy, education, and vocational fields. New and replacement facilities should increase density and height while retaining the traditional quad characteristic of the zone.
- **Existing Facilities** :: Eugene Short Hall, Sally Monserud Hall, Beatrice McDonald Hall, Lucy Cuddy Hall, Professional Studies Building, Wendy Williamson Auditorium, Allied Health Sciences Building, West Bridge, and Rasmuson Hall
- **Potential Future Actions** :: College of Education Expansion, Tanaina Child Development Center Relocation, Classroom Building, Army & Air Force ROTC



Implementation :: Site Selection



Similar Sized Institutions

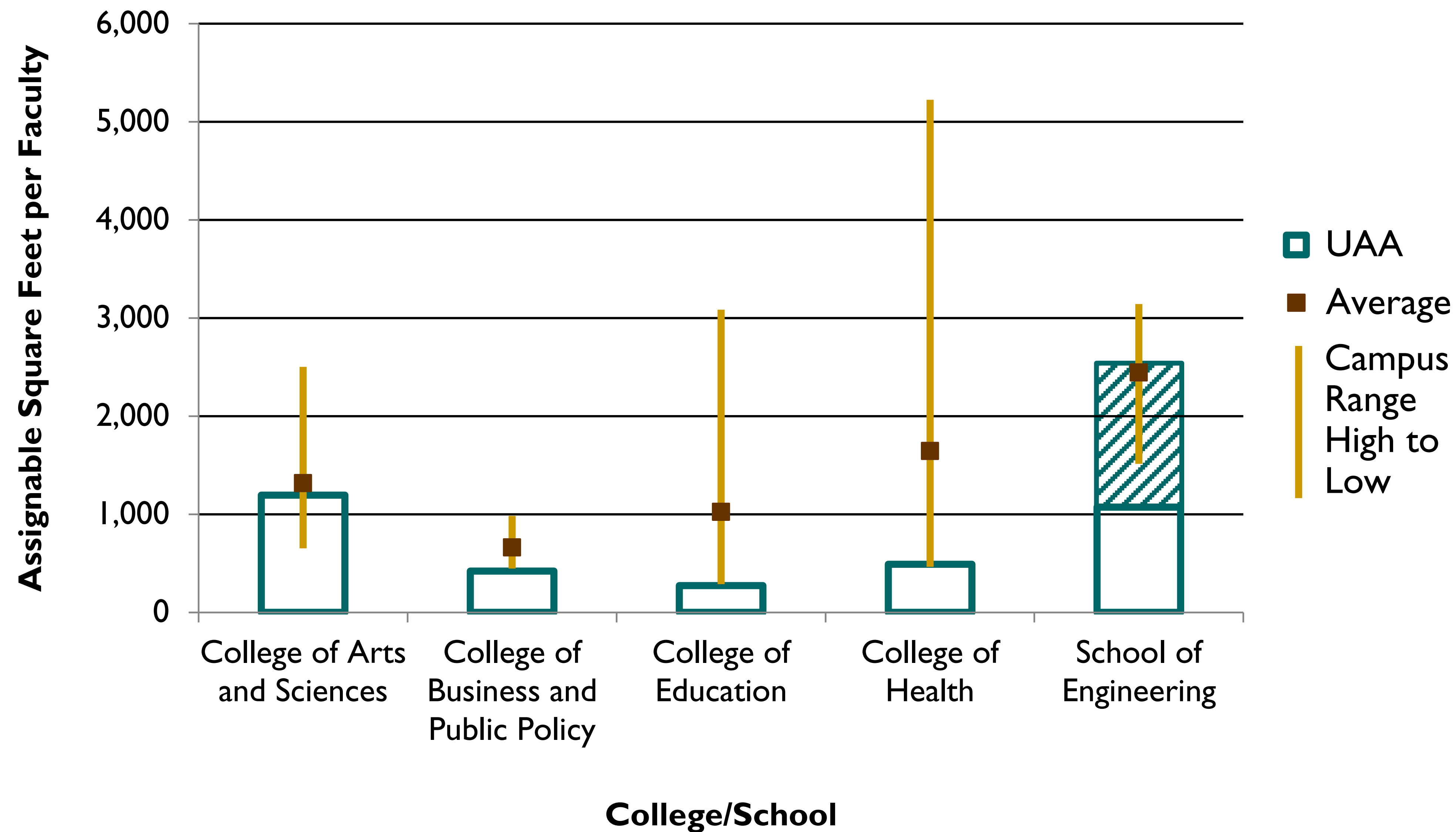
Campus Name	Carnegie Classification
University of Alaska Anchorage	Master's Colleges and Universities (large programs)
Idaho State University	Research University (high research activity)
Southern Connecticut State University *	Master's Colleges and Universities (large programs)
University of Nebraska-Lincoln	Research University (very high research activity)
University of Nevada, Reno	Research University (high research activity)
University of North Carolina at Greensboro *	Research University (high research activity)
University of North Dakota	Research University (high research activity)

Source: Ira Fink and Associates, Inc., based on data from the Carnegie Foundation for the Advancement of Teaching.

Note: This information is based on the 2010 edition of the Carnegie Classifications.

* UAA Institutional Peer

Space Comparison of ASF per Faculty,
University of Alaska Anchorage vs. Benchmark Institutions



Source: Ira Fink and Associates, Inc.



Includes only the existing Engineering Building at UAA.



Includes both the existing Engineering Building and the new Engineering and Industry Building at UAA.

Capital Improvement Plan (CIP)

Renewal and Renovation Highlights:

- Fine Arts Mechanical System Renewal
- Cuddy Phase II Renewal

New Construction Highlights:

- Campus Road Improvements
- Wells Fargo Sports Center Renovation & Student Recreation Addition
- Alaska Native Arts Program Building
- Health Sciences Phase II Building and Parking Structure
- Library North Entrance and Student Services Addition
- Community Arena and Athletic Facility

Projects in Progress:

- Alaska Airlines Center
- Engineering Phase I - Engineering Instructional Lab Building
- Beatrice McDonald Building Renewal
- HSB/Engineering Spine Connection

Master Plan Update Schedule

Community Open House :: Review & Comment :: June

Final Master Plan Board of Regents Comments :: July 31st

Final Master Plan Presentation :: September 26 - 27 :: Juneau

UAA Master Plan Blog :: uaamasterplan2012.blogspot.com/