

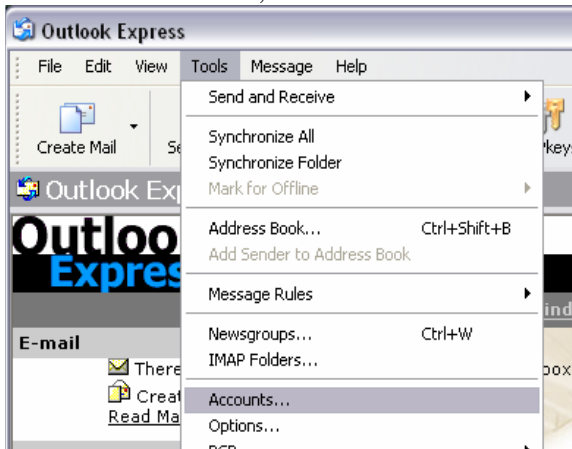
SMTP AUTHENTICATION - OUTLOOK EXPRESS 6

Purpose

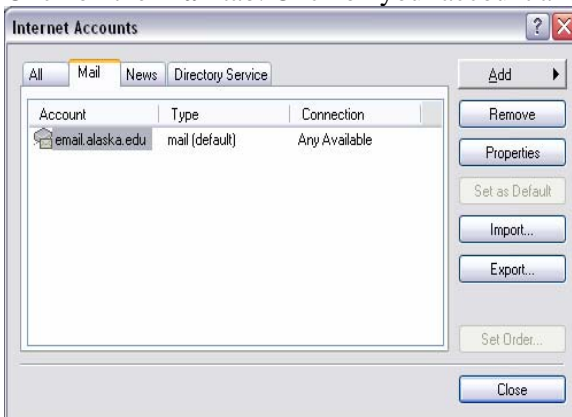
This document describes how to modify an existing email account in Outlook Express version 6, specifically how to change the outgoing mail server settings to enable outgoing server authentication. It does not describe the entire process of adding email accounts.

Procedure

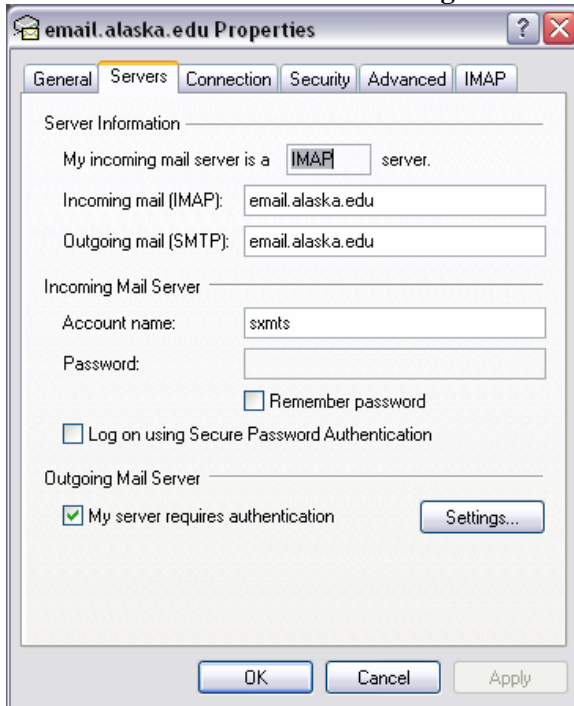
1. Open Microsoft Outlook Express.
2. From the Tools menu, click on **Accounts...**



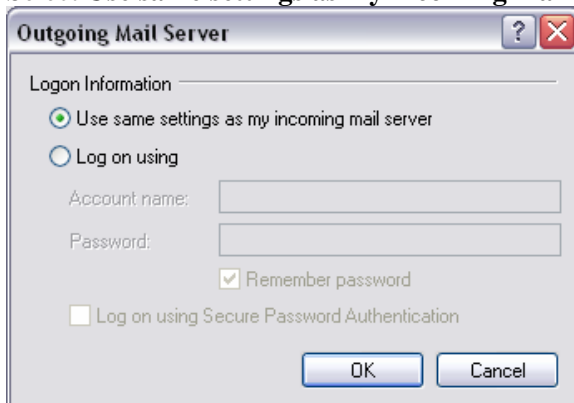
3. Click on the **Mail** tab. Click on your account and click on **Properties**.



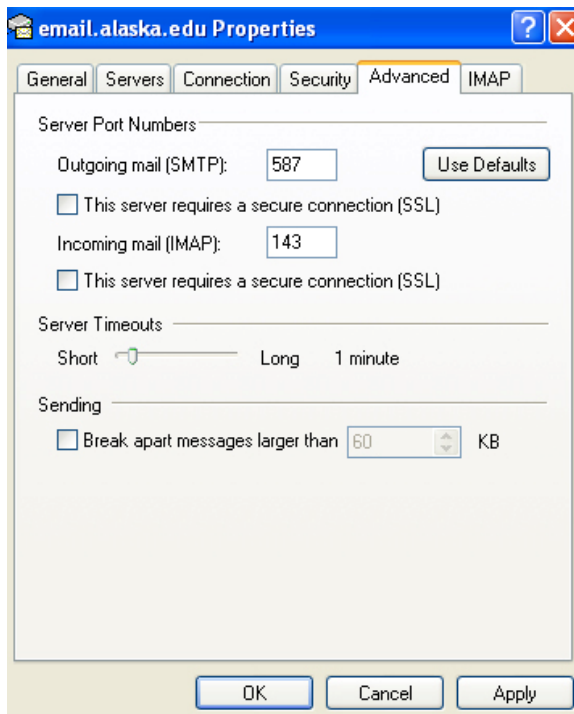
- Click on the **Servers** Tab. Under **Outgoing Mail Server**, place a check in **My Server Requires Authentication**. Click on the **Settings...** button.



- Select **Use same settings as my incoming mail server**. Click **OK**.



- Click on **Advanced**, and change the **Outgoing mail (SMTP) port to 587**



- Click **OK** or **Close** on any remaining setting windows, until you're back to the main screen. You should now be all set to authenticate with the mail server during mail sending.