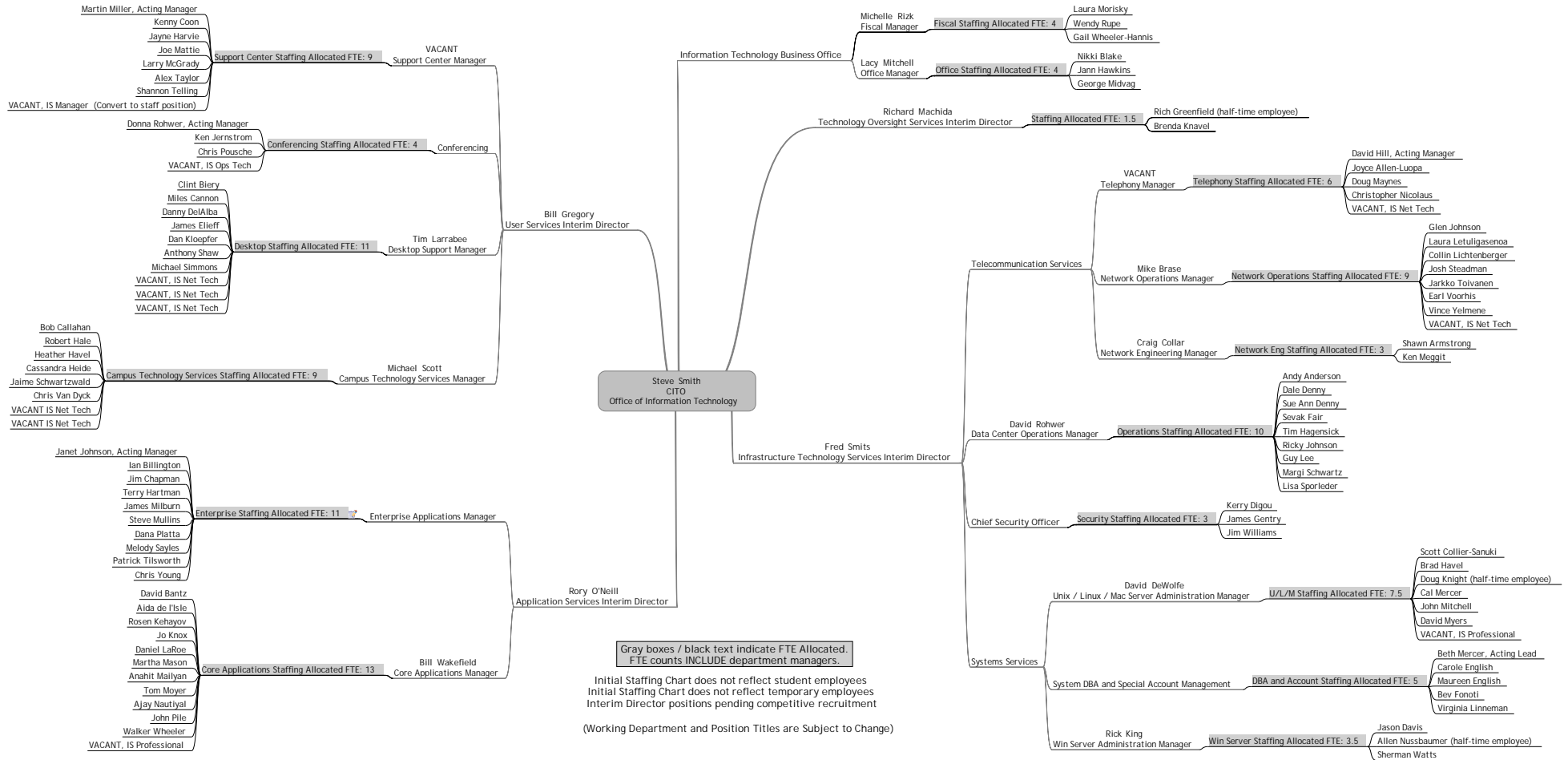


Office of Information Technology Organization Chart - Initial Staffing Allocations (v.1)

Final determination of allocations, reclassifications or recruitments is contingent upon Position Description review and classification by Human Resources.



Gray boxes / black text indicate FTE Allocated, FTE counts INCLUDE department managers.

Initial Staffing Chart does not reflect student employees
Initial Staffing Chart does not reflect temporary employees
Interim Director positions pending competitive recruitment

(Working Department and Position Titles are Subject to Change)

DEPARTMENT DESCRIPTIONS

IT Business Office - Coordinates and provides administrative and fiscal support for OIT.

User Services - Responsible for ensuring delivery of services for students, faculty and staff.

Applications Services - Application software services directed toward the end-user community without regard for MAU boundaries.

Infrastructure Technology Services - Services common to all deployed IT systems.

Technology Oversight Services - Coordinates and provides direction and guidance in various areas of OIT including, but not limited to: project management, strategic planning, communications, and security.