

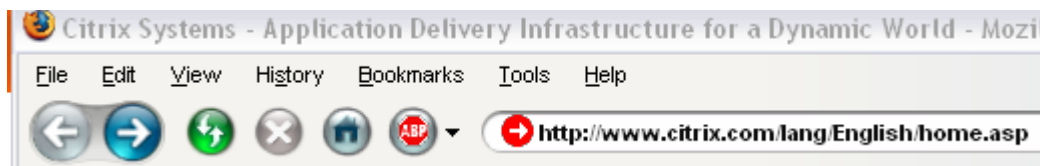


Last Updated: October 2007

II.7 Procedure for Setting Up Citrix

This procedure describes how to setup the citrix ICA client to connect to the foundation citrix servers. Section 1 describes how to download the citrix client (if uninstalled) and section 2 describes how to setup the connection to citrix.

1. Instructions to obtain the citrix client (if not installed)
 - A. Open a web browser
 - B. Browse to <http://www.citrix.com/lang/English/home.asp>



C. Select *Download*



D. Select *Clients*



Home > Support > Downloads

The downloads you need in one, easy place.

Welcome to Citrix Downloads. Here you'll find the software downloads you need to get the most out of your Citrix investment.

Clients

Download the latest Citrix clients and get the most out of your infrastructure investment.

Clients from Partners

Obtain client solutions offered by Citrix partners.

Product Software

Find the latest releases of product software and updates. May require My Citrix login to view & access complete file list.

Hotfixes, Rollups & Service Packs

Download the latest Hotfixes, Hotfix Rollup Packs, Service Packs and Feature Releases to take advantage of all the great upgrades



- E. Find the presentation server (represented here as “Citrix Presentation server Clients Version 10.1”. The version might change as new versions are released

Download Clients

Citrix Access Gateway

Windows 9x/NT/2000/2003/XP: 32-bit, 64-bit

Citrix Endpoint Analysis Client (EPAClient.msi) Version 4.2.5

Citrix Presentation Server

Windows Vista/XP/2003/2000

Citrix Streaming Client Version 1.1

Citrix Streaming Client Version 1.0

Citrix Presentation Server Clients Version 10.1

- F. Scroll down to *Recommended Versions* and click *download here* on the right side

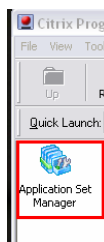
Recommended Versions					
Client Package Version 10.1	6/28/2007	All Languages	.msi	7.6 MB	Download Here
Read Me	Admin Guide				

- G. Save the file on your desktop
- H. Run the file (usually called ica32pkg.msi)
- I. Follow the directions for install

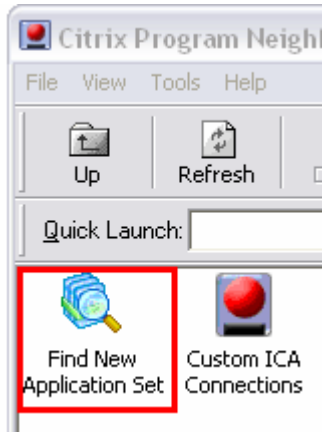
- 2. Adding the foundation citrix servers
 - A. Open the *Citrix Program Neighborhood*



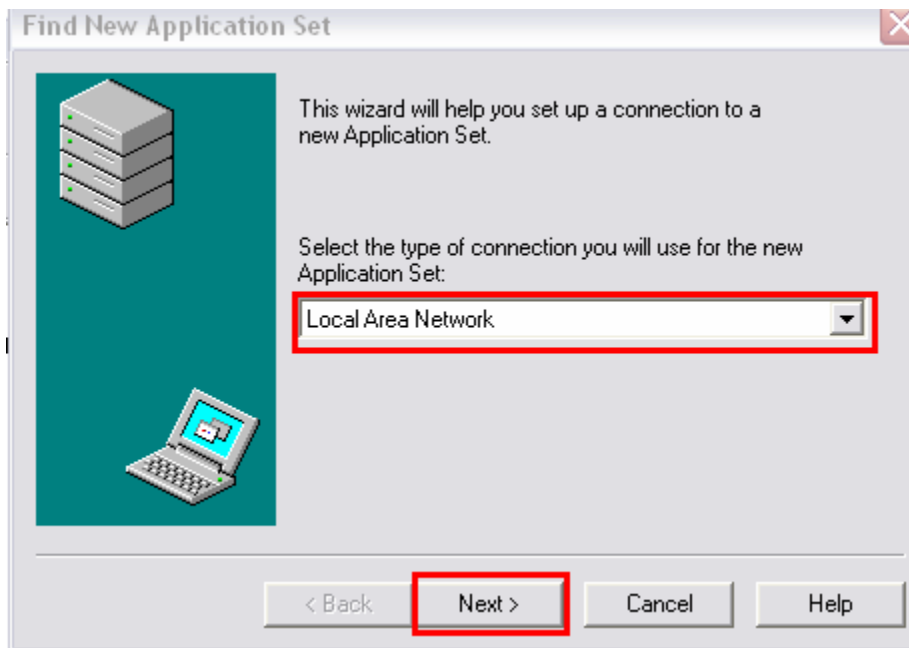
- B. Double click *Application Set Manager*



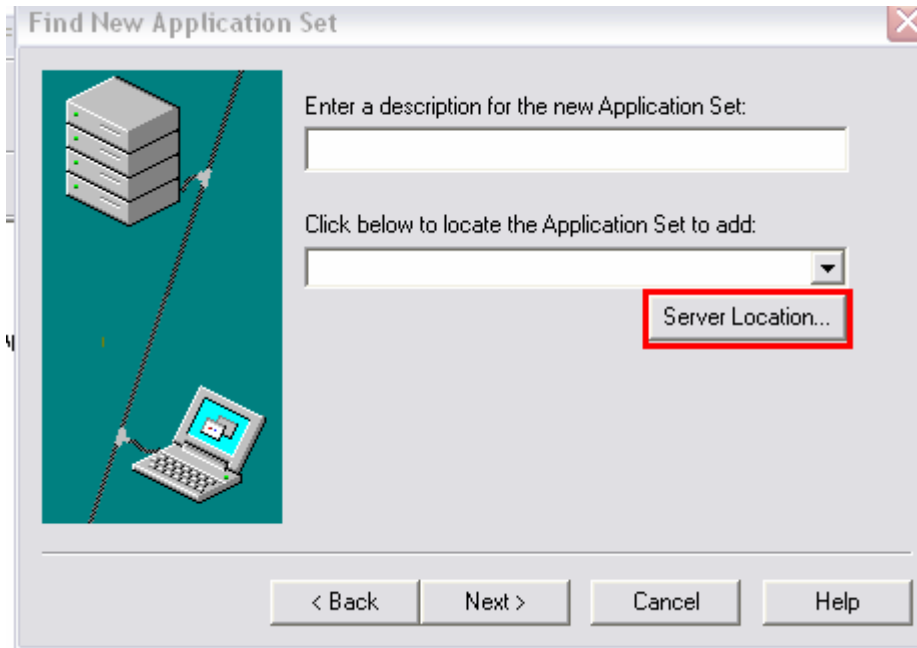
C. Double click *Find New Application Set*



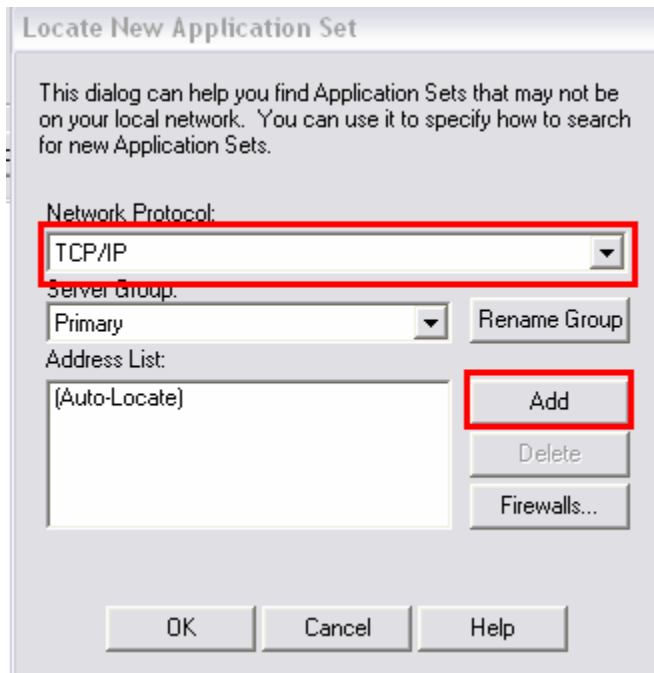
D. Make sure the connection dropdown box says *Local Area Network* and click *Next*



E. Click *Server Location*



F. Change the *Network Protocol* dropdown box to *TCP/IP* and click *Add*





G. Enter *137.229.10.200* in the text box and click okay

Add Server Location Address

Enter the new server location address below:

OK Cancel Help

H. Click Add, enter *137.229.10.201* in the text box and click okay (repeat steps F, G, and H)

Locate New Application Set

This dialog can help you find Application Sets that may not be on your local network. You can use it to specify how to search for new Application Sets.

Network Protocol:
TCP/IP

Server Group:
Primary Rename Group

Address List:
137.229.10.200

Add Delete Firewalls...

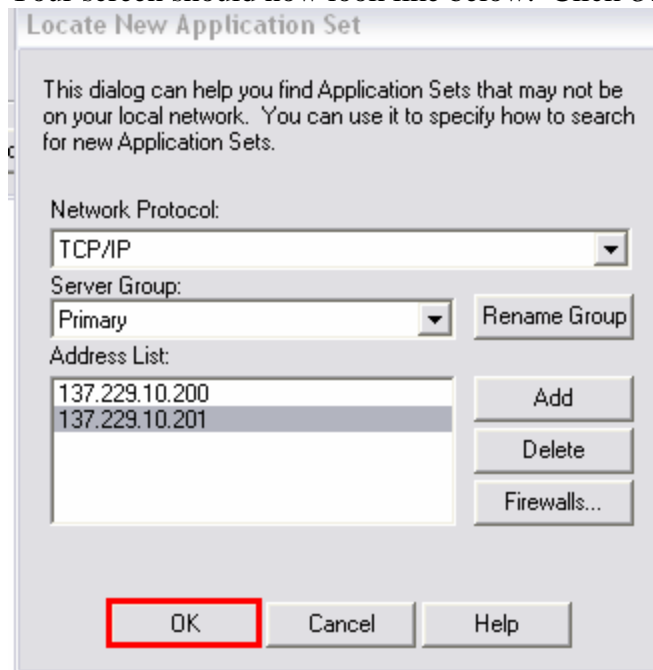
OK Cancel Help

Add Server Location Address

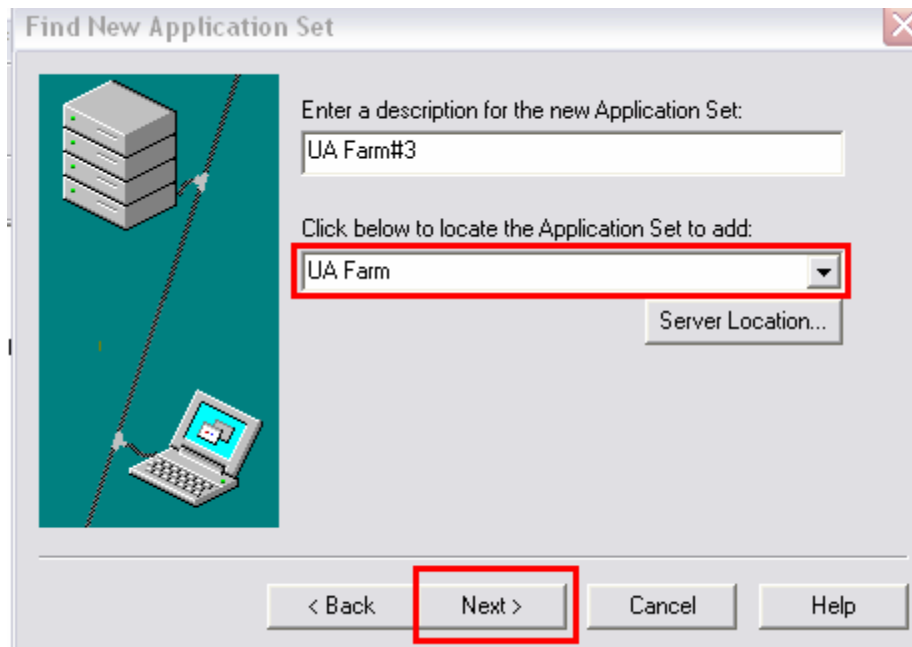
Enter the new server location address below:

OK Cancel Help

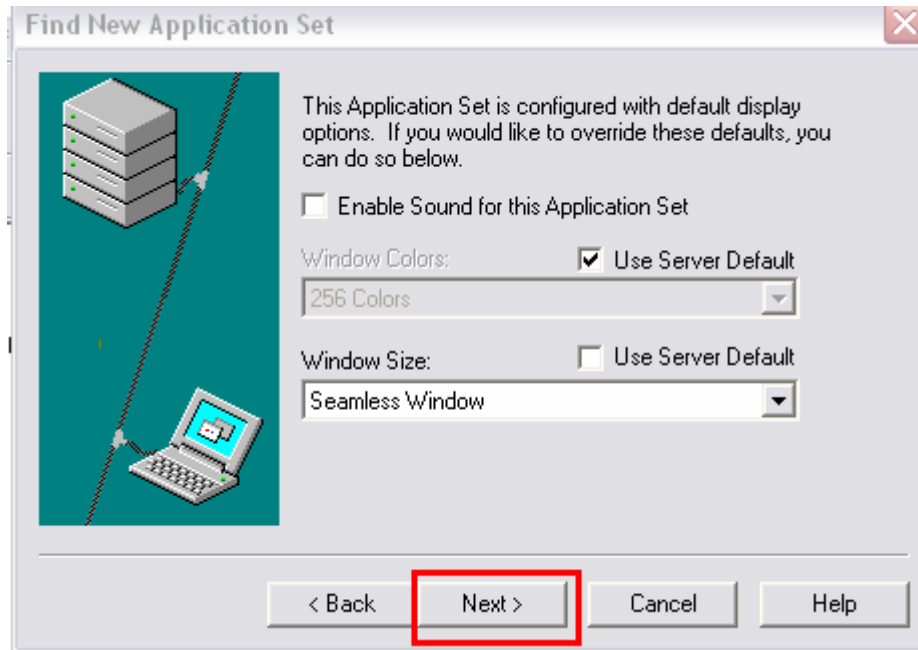
I. Your screen should now look like below. Click *Ok*



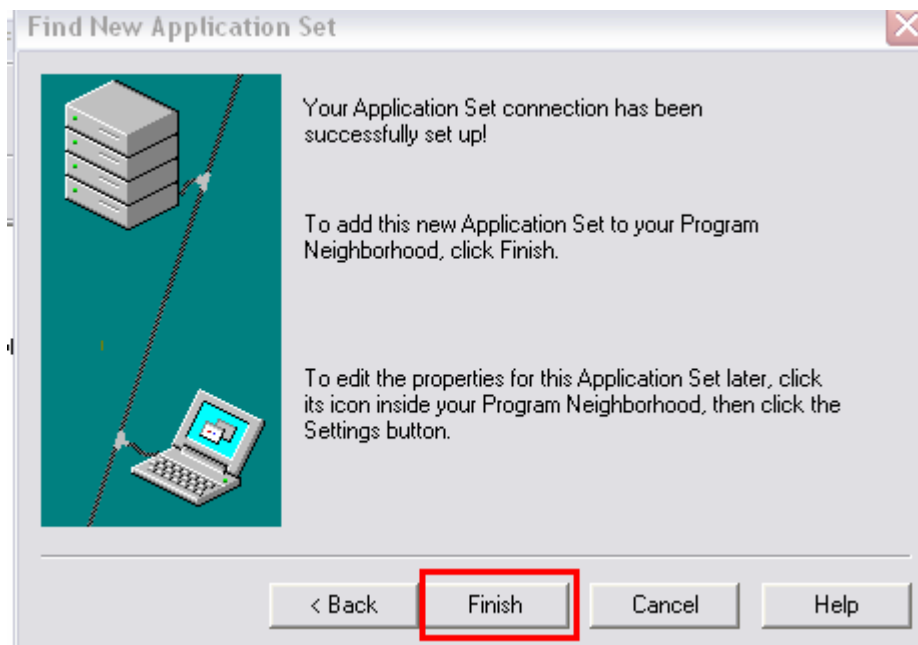
J. Select *UA Farm* from the *Application Set* dropdown box. The description box will auto-fill with a name. Click next.



K. Make all options look as below and click *Next*



L. Click *Finish*



M. Double click the icon that will appear in your *Citrix Program Neighborhood* (In this case, it shows up as UA Farm#3)



N. Fill in the *Username*, *Password*, *Domain*, click the *Save Password* checkbox, and click *Ok*. **NOTE:** This is your statewide domain password, provided to you by the database administrator when your account was setup initially.





- O. A series of folders and icons should appear in *Citrix Program Neighborhood*.
Note: You may or may not have all of these icons, depending on your level of security.

