



Office 2013 - Software Center Installation Document

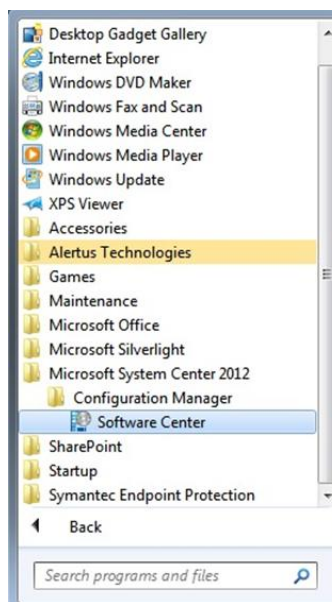
Microsoft Office 2013 Professional Installation

*NOTE: You are not required to delete your current Microsoft Office client before upgrading, but if you currently have a version of Microsoft Office installed a restart is required during the upgrade process.

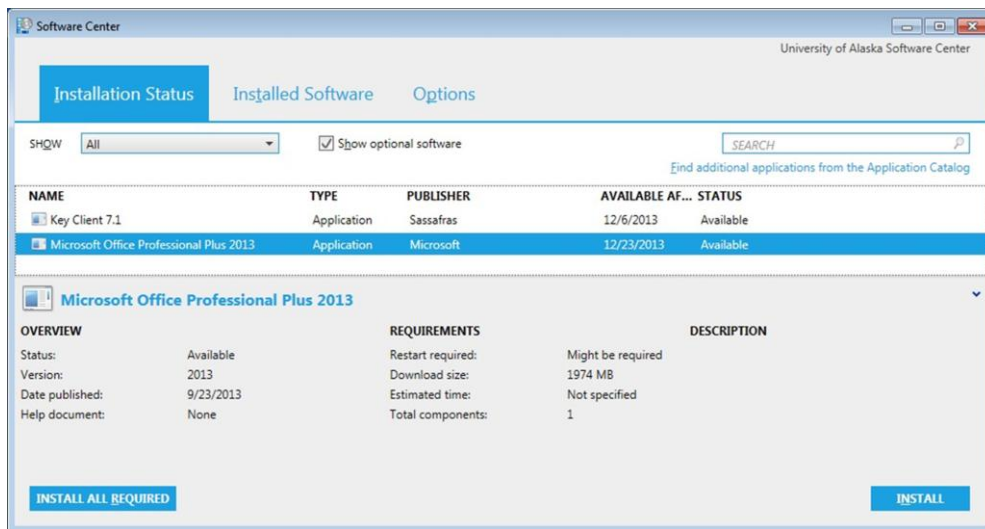
1. When the software is available to your computer to install you will receive the following notification:



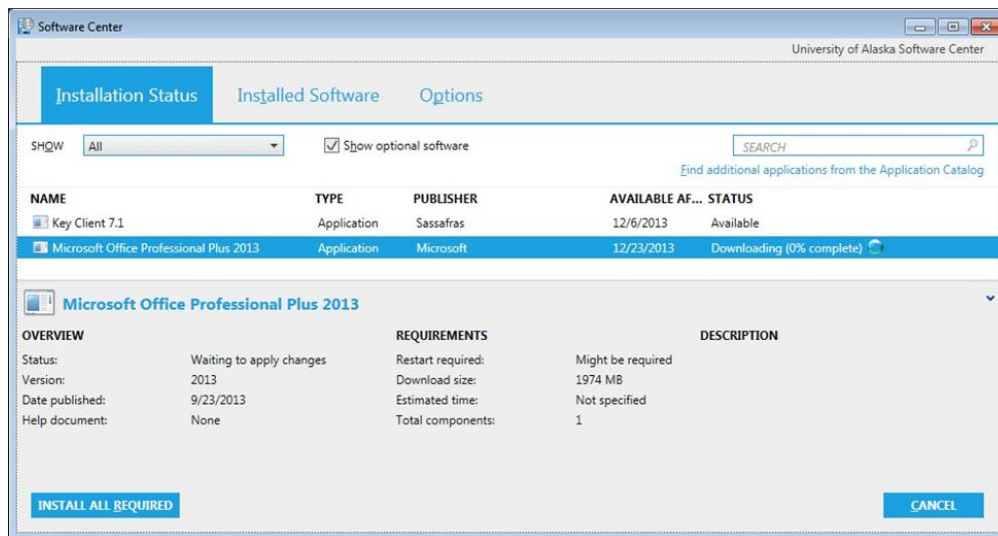
2. When you are ready to install you can open software center from the start menu.



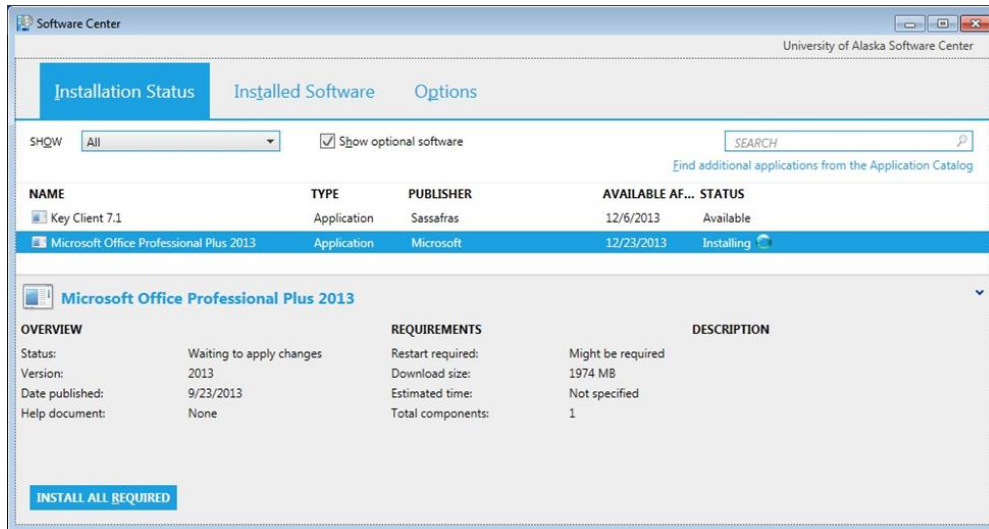
3. When you open Software Center the following window opens:



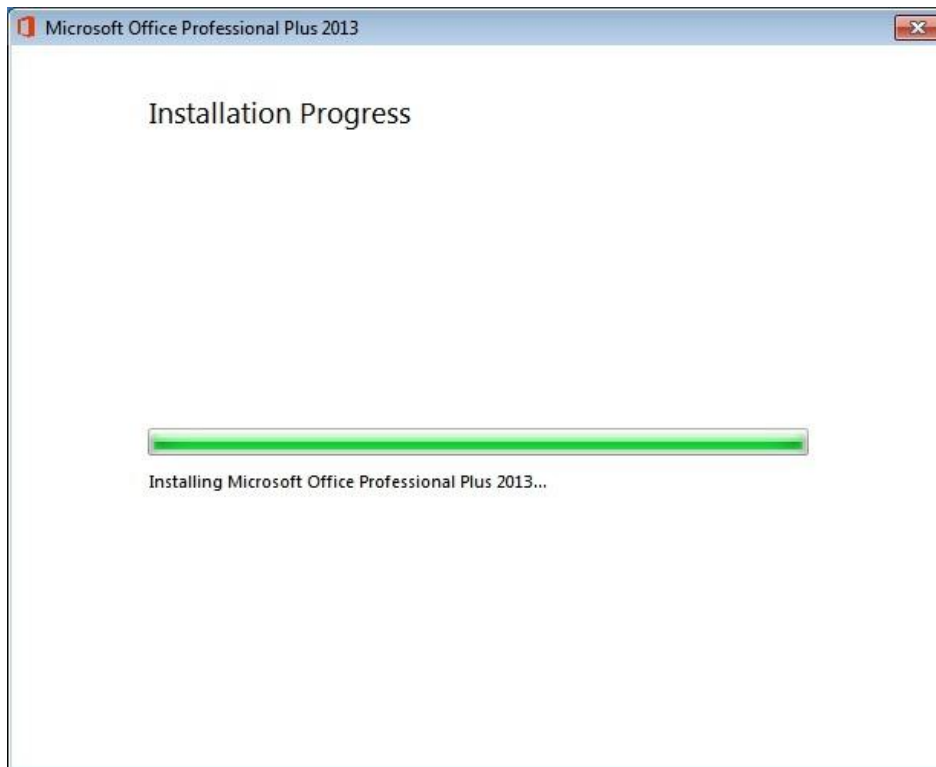
4. After selecting Microsoft Office Professional 2013, click install, and the Office 2013 installer will begin downloading:



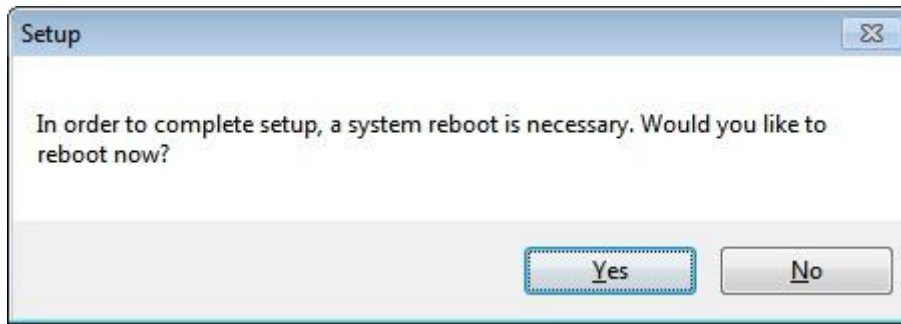
5. After the installer is finished downloading it will begin installing automatically (*no input is required*)



6. This is the screen that will be shown during the installation process which takes approximately 30 minutes.



7. Please reboot your system by selecting the “Yes” Button if prompted from the dialog box



8. After the required restart your system center will update to “Installed” for Microsoft Office Professional 2013

