



PROJECT UPDATE

Name of Project: UAA Sports Arena

Location of Project: UAA - Anchorage

Project Number: 564289(09)

Date of Request: September 1, 2009

Estimated Total Project Cost: \$80,000,000

Approval Required: None Info Only

Prior Approvals/Actions: Preliminary Project Approval: Aug 2008

Formal Project Approval: Feb 2009

65% Design Approval: June 2009

Supporting Documents

- One Page Budget
- Program Development Sheet
- Schematics
 - Site Plan
 - Lower Level
 - Entry level
 - Upper Level
 - East-West Section
 - North -South Section
 - East- West Elevation
 - North-South Elevation

UNIVERSITY OF ALASKA

Project Name: UAA Sports Arena

MAU: UAA

Building: UAA Sports Arena

Date: September 1, 2009

Campus: Anchorage

Prepared by: Stan Vanover

Project #:

Acct #: 564289(09)

Total GSF Affected by Project:

130,000

145,300

PROJECT BUDGET

FPA Budget

35% Update Budget

A. Professional Services

Advance Planning, Program Development

Consultant: Design Services

\$ 4,800,000 \$ 5,124,000

Consultant: Construction Phase Services

\$ 750,000

Consul: Extra Services (List: _____)

Site Survey

\$ 40,000 \$ 40,000

Soils Testing & Engineering

\$ 45,000 \$ 45,000

Special Inspections

Plan Review Fees / Permits

\$ -

Other (List: _____)

Professional Services Subtotal

\$ 4,885,000 \$ 5,959,000

B. Construction

General Construction Contract(s)

\$ 61,440,000 \$ 62,172,914

Other Contractors: (Utilities Infrastructure)

\$ 346,600 \$ 346,600

Construction Contingency

\$ 6,144,000 \$ 3,462,670

Construction Subtotal

\$ 67,930,600 \$ 65,982,184

Construction Cost per GSF

\$ 523 \$ 454

C. Building Completion Activity

Plan Review Fees/Permits

\$ 170,000 \$ 200,000

Equipment

\$ 1,300,000 \$ 2,543,693

Fixtures - IT Switch/etc

\$ -

Furnishings

\$ 1,100,000 \$ 665,123

Signage not in construction contract

Move-In Costs

Art

\$ 614,400 \$ 600,000

Other (Interim Space Needs or Temp Reloc. Costs)

Maintenance Operation Support

\$ 50,000

Equipment and Furnishings Subtotal

\$ 3,184,400 \$ 4,058,816

D. Owner Activities and Administrative Costs

Project Plng, Staff Support

Project Management

\$ 4,000,000 \$ 4,000,000

Misc. Expenses: Advertising, Printing, Supplies, Etc.

Administrative Costs Subtotal

\$ 4,000,000 \$ 4,000,000

E. Total Project Cost

\$ 80,000,000 \$ 80,000,000

Total Project Cost per GSF

\$ 615 \$ 551

F. Total Appropriation(s)

\$ 80,000,000 \$ 80,000,000

University of Alaska Anchorage -- New Sports Arena

Revised Building Program

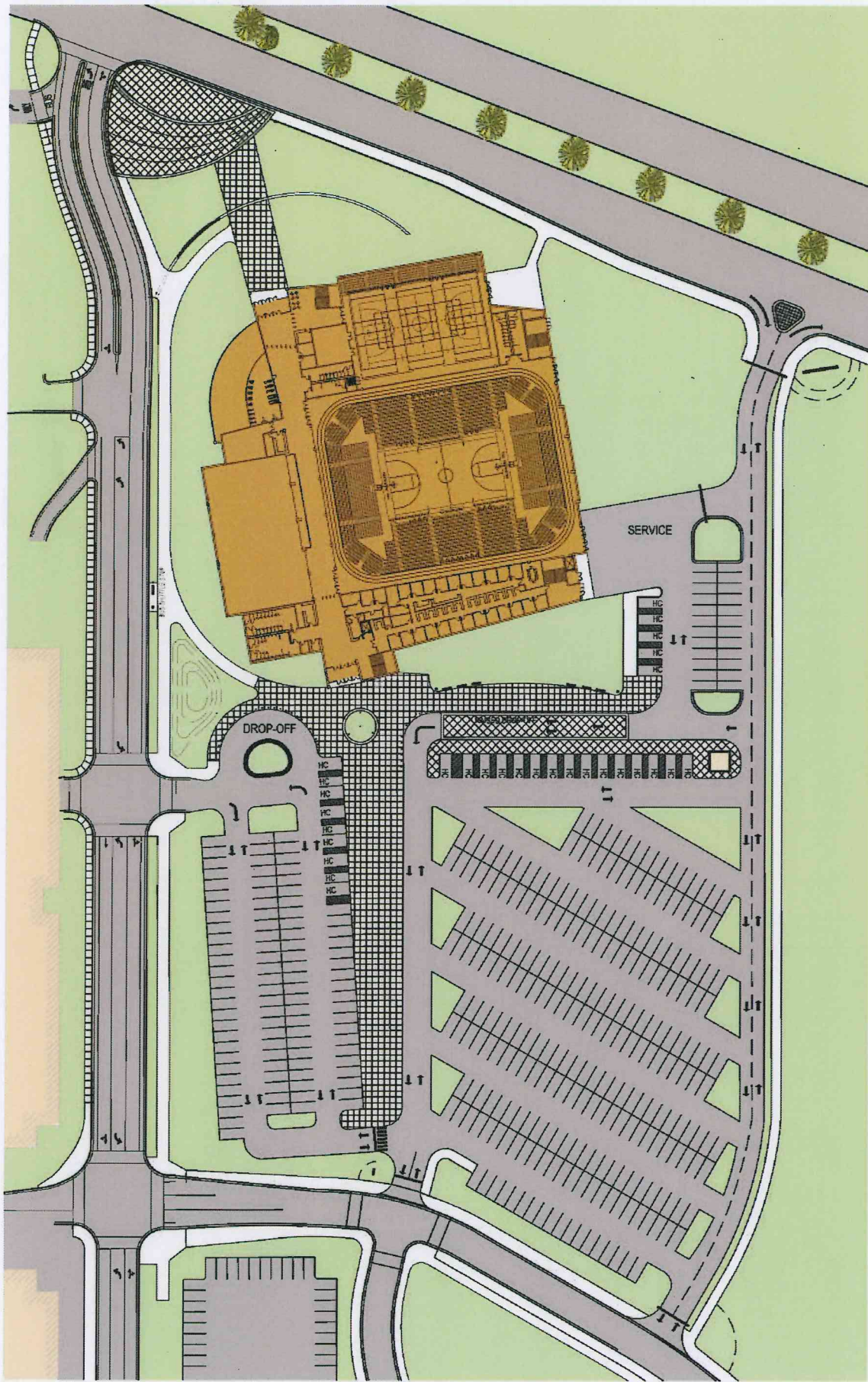
Hastings+Chivetta Architects, Inc./ McCool Carlson Green

Date: February 11, 2009
Revised: August 13, 2009

Component	Program from Workshop No. 1 November 5, 2008			Program Revisions February 11, 2009			Program Revisions August 13, 2009		
	No. of Units	Area SF	Total NASF	No. of Units	Area SF	Total NASF	No. of Units	Area SF	Total NASF
Net Building Area (NASF)	80%		122,403 SF	84%		127,363 SF	81%		117,160 SF
Circulation and Walls	20%		30,601 SF	16%		24,638 SF	19%		28,140 SF
Gross Building Area	100%		153,003 SF	100% (+/-)		152,000 SF	100% (+/-)		145,300 SF

	Program from Workshop No. 1 November 5, 2008			Program Revisions February 11, 2009			Program Revisions August 13, 2009		
	No. of Units	Area SF	Total NASF	No. of Units	Area SF	Total NASF	No. of Units	Area SF	Total NASF
1.00 Public Spaces		4,570 SF	4,570 SF		8,420 SF	8,420 SF		12,319 SF	12,319 SF
2.00 Team Meeting Rooms		2,160 SF	2,160 SF		1,910 SF	1,910 SF		1,347 SF	1,347 SF
3.00 Performance Gymnasium Private Suites		3,360 SF	3,360 SF		1,670 SF	1,670 SF		1,846 SF	1,846 SF
4.00 Athletic User Support		14,360 SF	14,360 SF		15,875 SF	15,875 SF		14,353 SF	14,353 SF
5.00 Venue Administration		975 SF	975 SF		1,223 SF	1,223 SF		1,133 SF	1,133 SF
6.00 Performance Gymnasium		40,150 SF	40,150 SF		43,310 SF	43,310 SF		38,342 SF	38,342 SF
7.00 Gymnastics Facility		10,120 SF	10,120 SF		9,240 SF	9,240 SF		9,333 SF	9,333 SF
8.00 Auxiliary Gymnasium		14,800 SF	14,800 SF		14,300 SF	14,300 SF		12,616 SF	12,616 SF
9.00 Athletic Fitness		4,770 SF	4,770 SF		4,740 SF	4,740 SF		4,697 SF	4,697 SF
10.00 Training Room		1,930 SF	1,930 SF		2,250 SF	2,250 SF		2,195 SF	2,195 SF
11.00 Athletic Administration		9,548 SF	9,548 SF		10,140 SF	10,140 SF		8,036 SF	8,036 SF
12.00 Academic Support Facilities		3,375 SF	3,375 SF		2,000 SF	2,000 SF		0 SF	0 SF
13.00 Athletic Building Support		12,285 SF	12,285 SF		12,285 SF	12,285 SF		10,943 SF	10,943 SF

Net Building Area (NASF)	80%		122,403 SF	84%		127,363 SF	81%		117,160 SF
Circulation and Walls	20%		30,601 SF	16%		24,638 SF	19%		28,140 SF
Gross Building Area	100%		153,003 SF	100%		152,000 SF	100%		145,300 SF

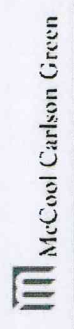


Site Plan
New Sports Arena



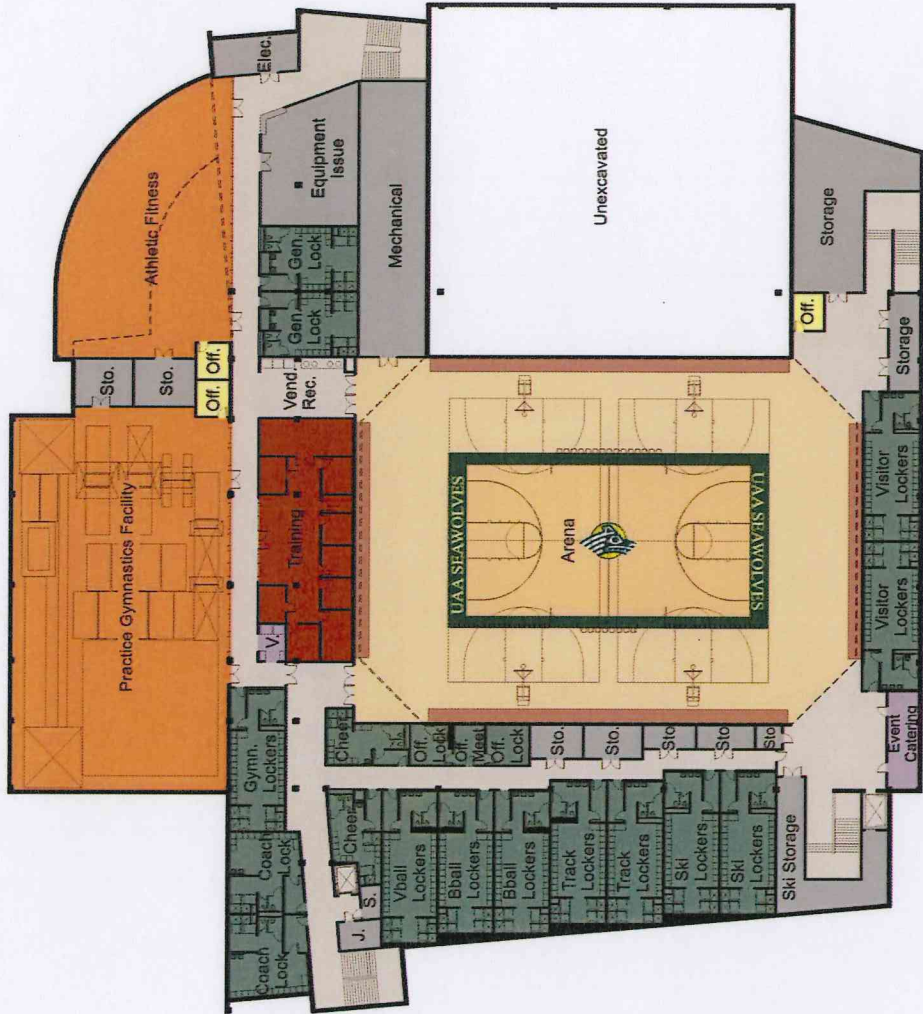
UAA
UNIVERSITY OF ALASKA
ANCHORAGE

Hastings+Chivetta
ARCHITECTS · PLANNERS · INTERIOR DESIGNERS



McCool Carlson Green

August 13, 2009



Lower Level
New Sports Arena

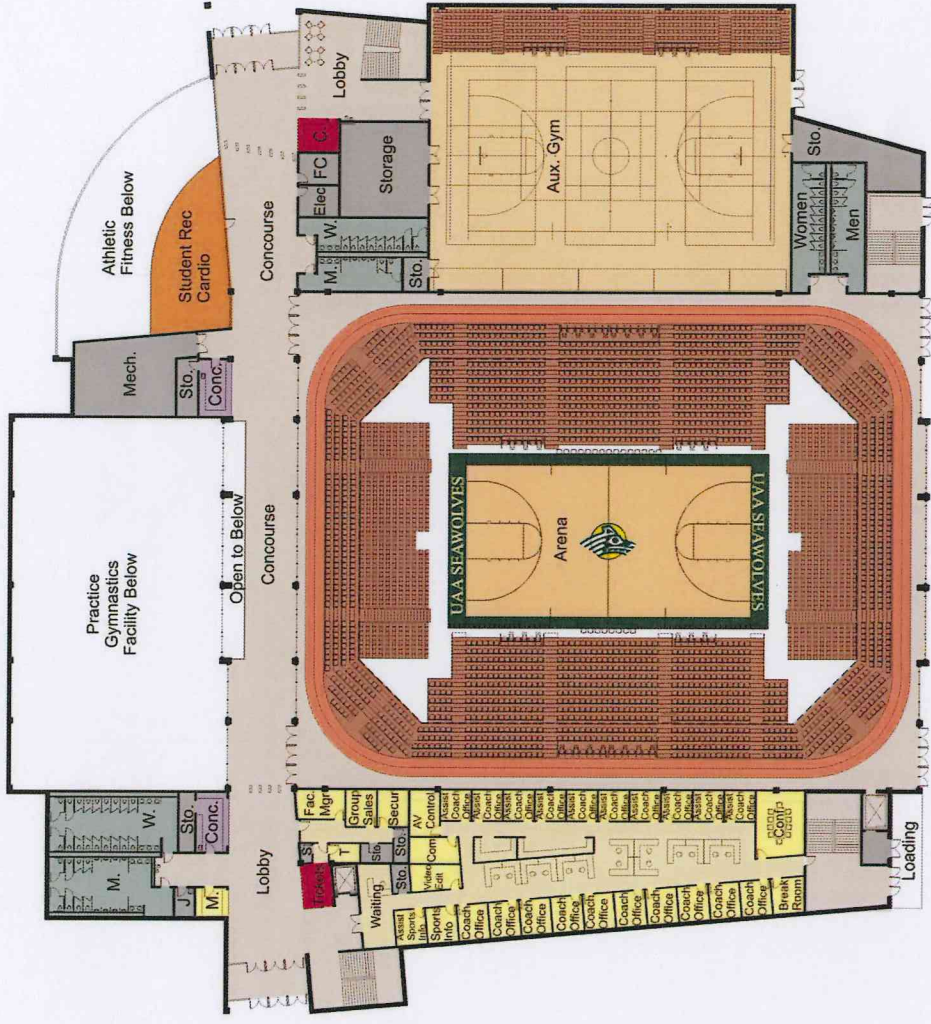


UAA
 UNIVERSITY of ALASKA
 ANCHORAGE

McCool Carlson Green

Hastings-Chivetta
 ARCHITECTS • PLANNERS • INTERIOR DESIGNERS

August 13, 2009



SEATING COUNTS:

- Performance Arena Seating - 3,068
- Auxiliary Gymnasium Seating - 432



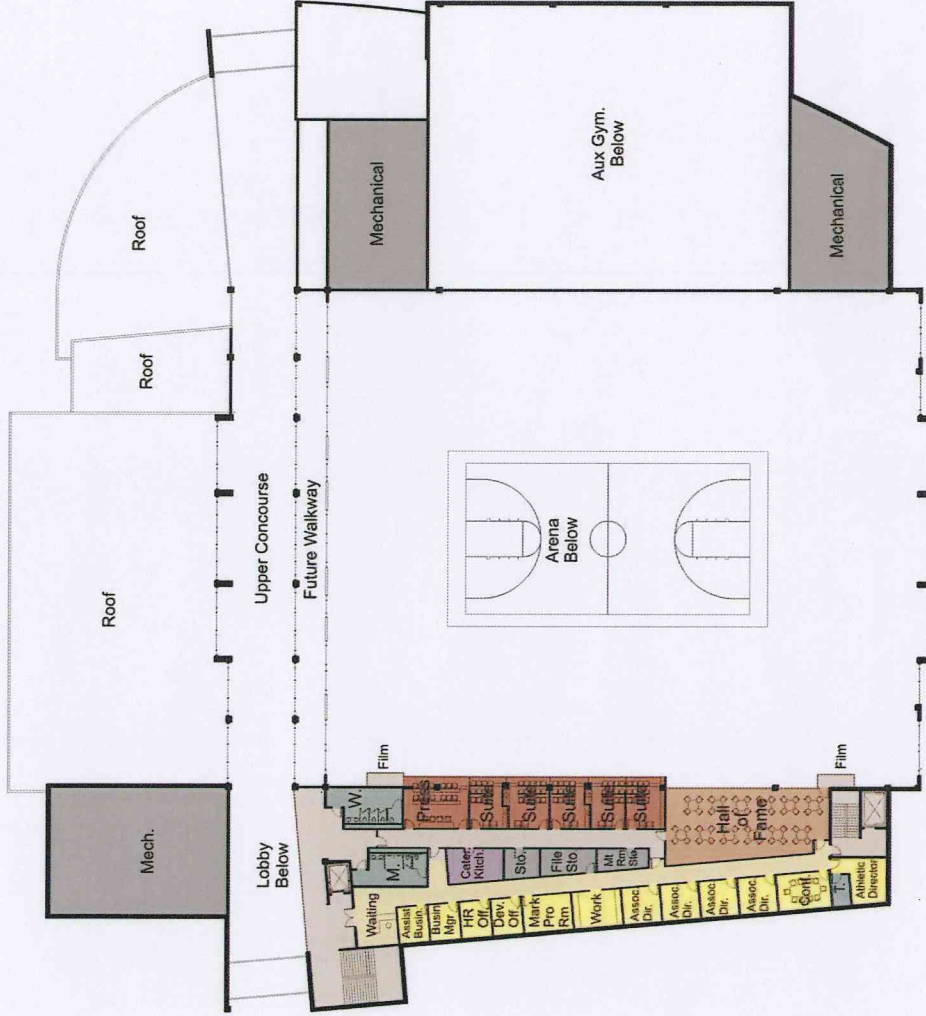
Entry Level
New Sports Arena



Hastings+Chivetta
ARCHITECTS • PLANNERS • INTERIOR DESIGNERS

McCool Carlson Green

August 13, 2009



Upper Level
New Sports Arena

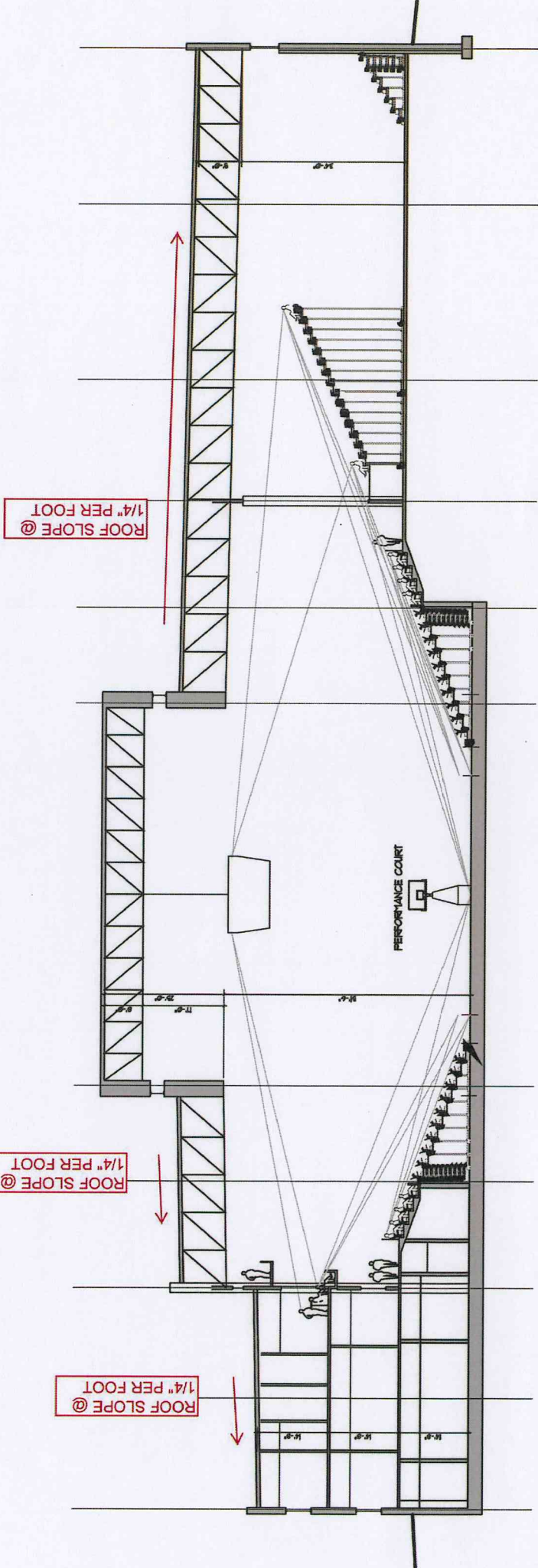


UNIVERSITY of ALASKA
ANCHORAGE

Hastings+Chivetta
ARCHITECTS • PLANNERS • INTERIOR DESIGNERS

McCool Carlson Green

August 13, 2009



East-West Section
New Sports Arena

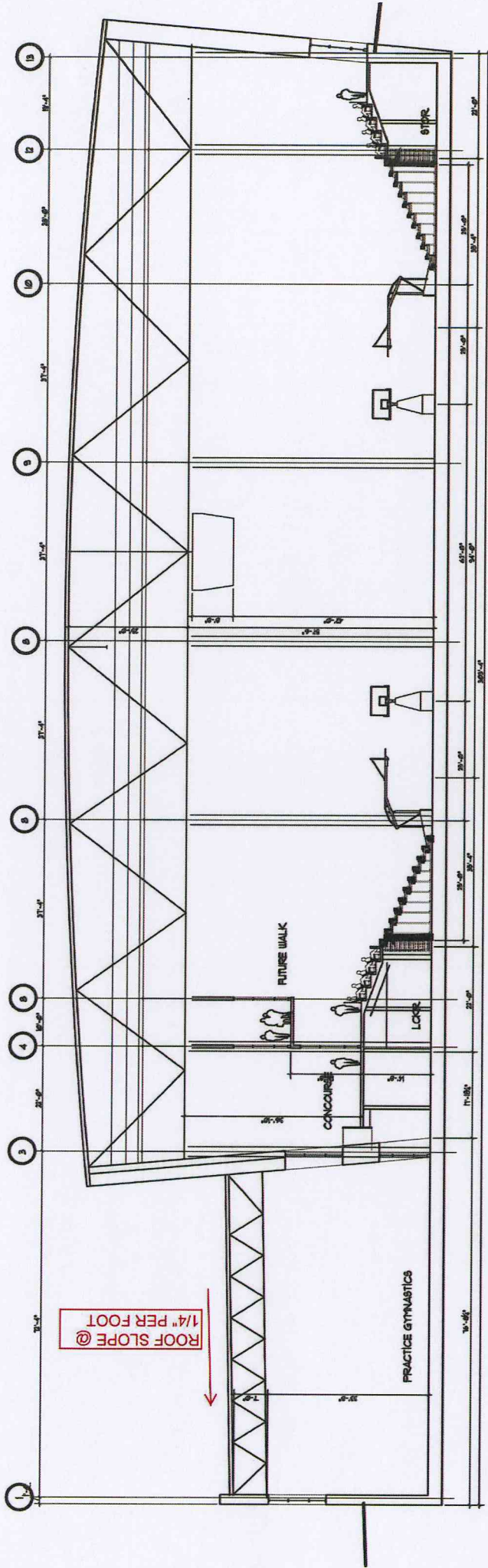


UAA
 UNIVERSITY of ALASKA
 ANCHORAGE

Hastings+Chivetta
 ARCHITECTS · PLANNERS · INTERIOR DESIGNERS

McCool Carlson Green

August 13, 2009



North-South Section
New Sports Arena

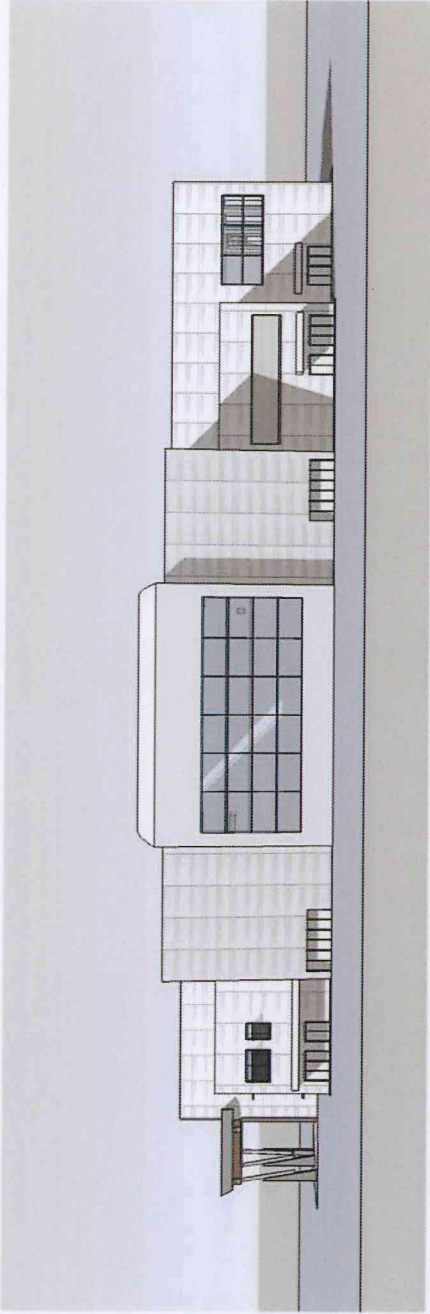


UAA
 UNIVERSITY of ALASKA
 ANCHORAGE

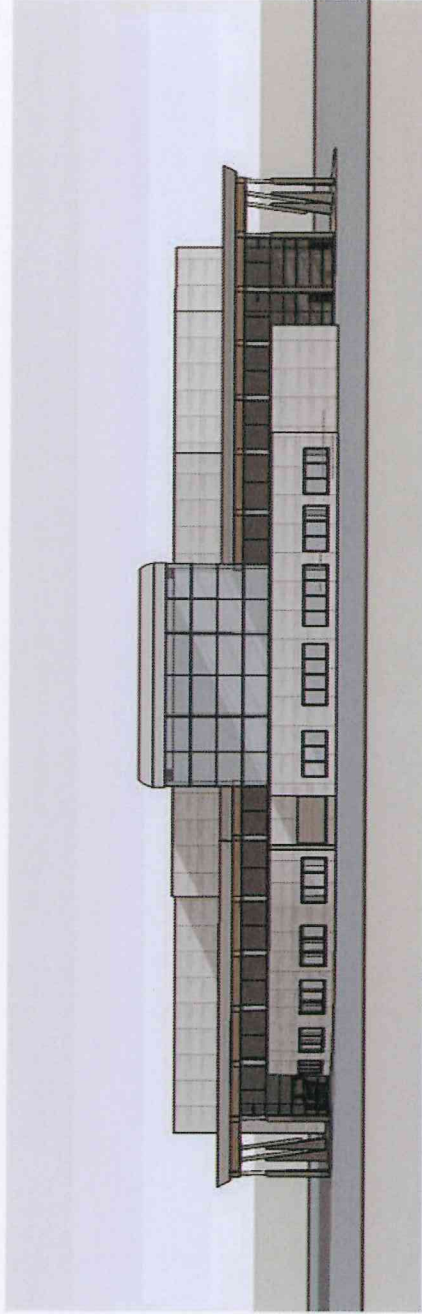
McCool Carlson Green

Hastings+Chivetta
 ARCHITECTS · PLANNERS · INTERIOR DESIGNERS

August 13, 2009



EAST ELEVATION



WEST ELEVATION

East-West Elevations
New Sports Arena



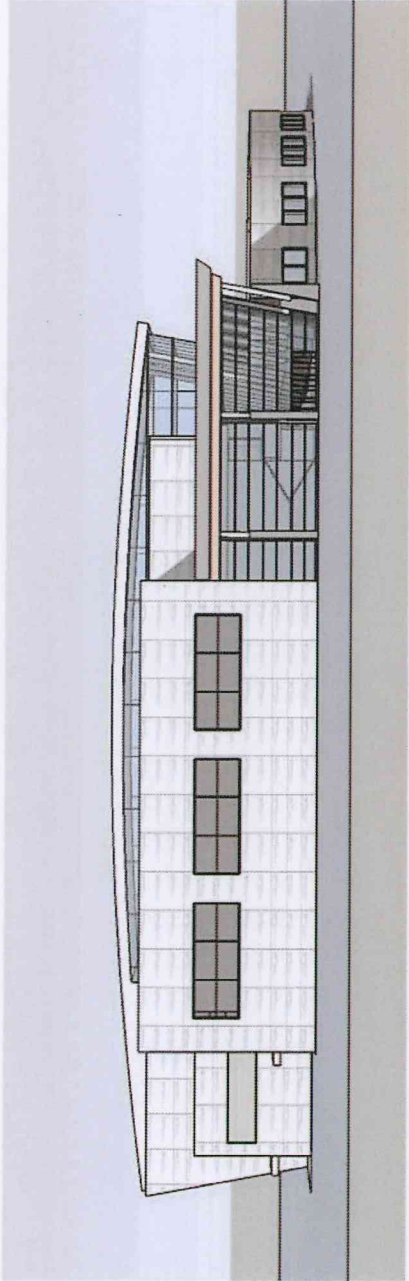
UAA
UNIVERSITY OF ALASKA
ANCHORAGE



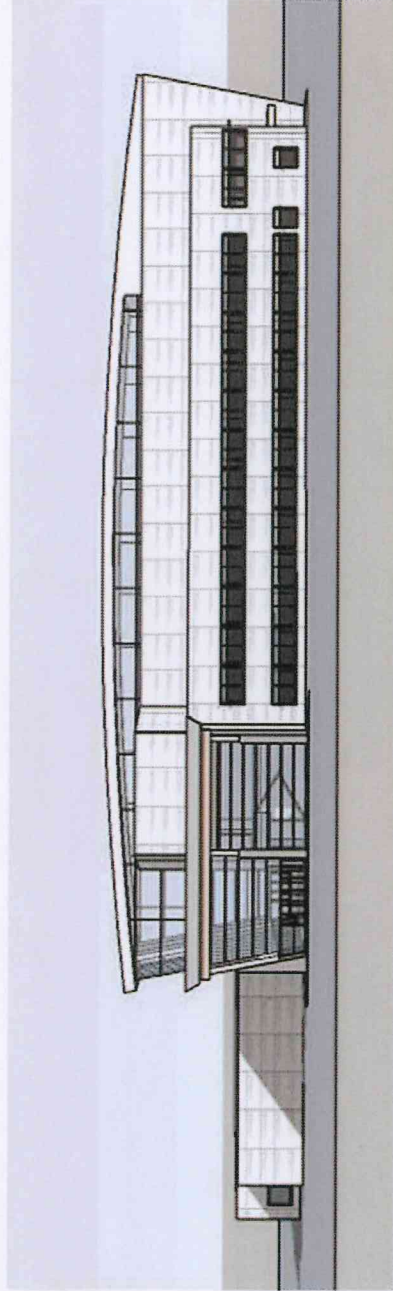
McCool Carlson Green

Hastings+Chivetta
ARCHITECTS · PLANNERS · INTERIOR DESIGNERS

August 13, 2009



NORTH ELEVATION



SOUTH ELEVATION



UAA
UNIVERSITY of ALASKA
ANCHORAGE

North-South Elevations
New Sports Arena



McCool Carlson Green

Hastings+Chivetta
ARCHITECTS · PLANNERS · INTERIOR DESIGNERS

August 13, 2009