



## ***PROJECT UPDATE***

**Name of Project:** UAA Sports Arena

**Location of Project:** UAA - Anchorage

**Project Number:** 564289(09)

**Date of Request:** November 1, 2009

**Estimated Total Project Cost:** \$80,000,000

**Approval Required:** None Info Only

**Prior Approvals/Actions:** Preliminary Project Approval: Aug 2008

Formal Project Approval: Feb 2009

65% Design Approval: June 2009

### **Supporting Documents**

- One Page Budget
- Schematics
  - Exterior Rendering of North Entry
  - Site Plan
  - Lower Level Plan
  - Entry level Plan
  - Upper Level Plan
  - Building Sections
  - Exterior Aerial Views
  - Building Elevations
- Program Document

**UNIVERSITY OF ALASKA**

Project Name: UAA Sports Arena

MAU: UAA

Building: UAA Sports Arena

Campus: Anchorage

Project #:

Date: October 30, 2009

Prepared by: Stan Vanover

Acct #: 564289(09)

Total GSF Affected by Project:

130,000

148,200

**PROJECT BUDGET**

FPA Budget

35% Update Budget

**A. Professional Services**

Advance Planning, Program Development

Consultant: Design Services

Consultant: Construction Phase Services

Consul: Extra Services (List: \_\_\_\_\_)

Site Survey

Soils Testing &amp; Engineering

Special Inspections

Plan Review Fees / Permits

Other (List: \_\_\_\_\_)

*Professional Services Subtotal***B. Construction**

General Construction Contract(s)

Other Contractors: (Utilities Infrastructure)

Construction Contingency

*Construction Subtotal**Construction Cost per GSF***C. Building Completion Activity**

Plan Review Fees/Permits

Equipment

Fixtures - IT Switch/etc

Furnishings

Signage not in construction contract

Move-In Costs

Art

Other (Interim Space Needs or Temp Reloc. Costs)

Maintenance Operation Support

*Equipment and Furnishings Subtotal***D. Owner Activities and Administrative Costs**

Project Plng, Staff Support

Project Management

Misc. Expenses: Advertising, Printing, Supplies, Etc.

*Administrative Costs Subtotal***E. Total Project Cost***Total Project Cost per GSF***F. Total Appropriation(s)**





SCHEMATIC DESIGN SUBMITTAL

PROJECT NO.	2076.02
DATE	09-17-2008
REVISIONS	
SHEET NAME	SCHEMATIC DESIGN
UNIVERSITY OF ALASKA ANCHORAGE	
ILLUSTRATIVE	



Hastings+Chivetta

Hastings & Chivetta Architects, Inc.  
701 Corporate Park Dr., Ste. 400  
St. Louis, MO 63105 • 314-863-8717

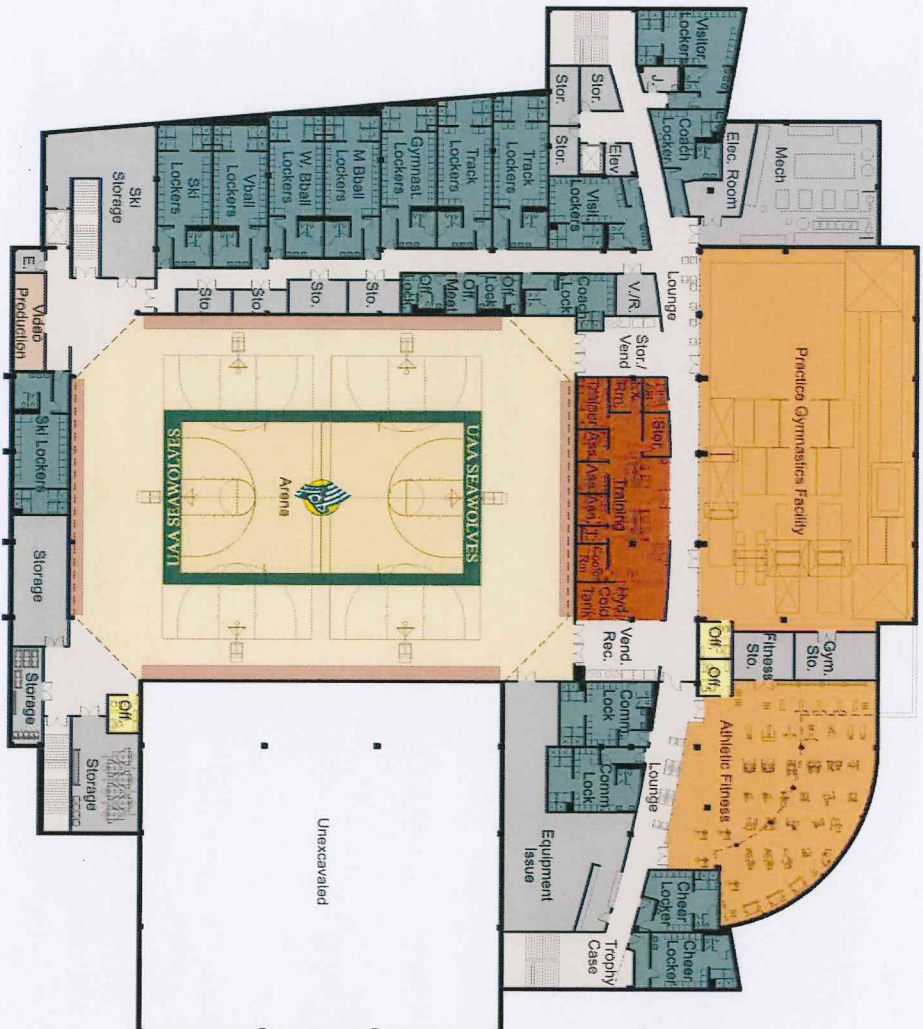


McCOOL CARLSON GREEN  
ARCHITECTURE INTERIOR DESIGN SPACE PLANNING  
901 W. 25TH AVENUE, ANCHORAGE, AK 99507 585-8474

NOT FOR CONSTRUCTION

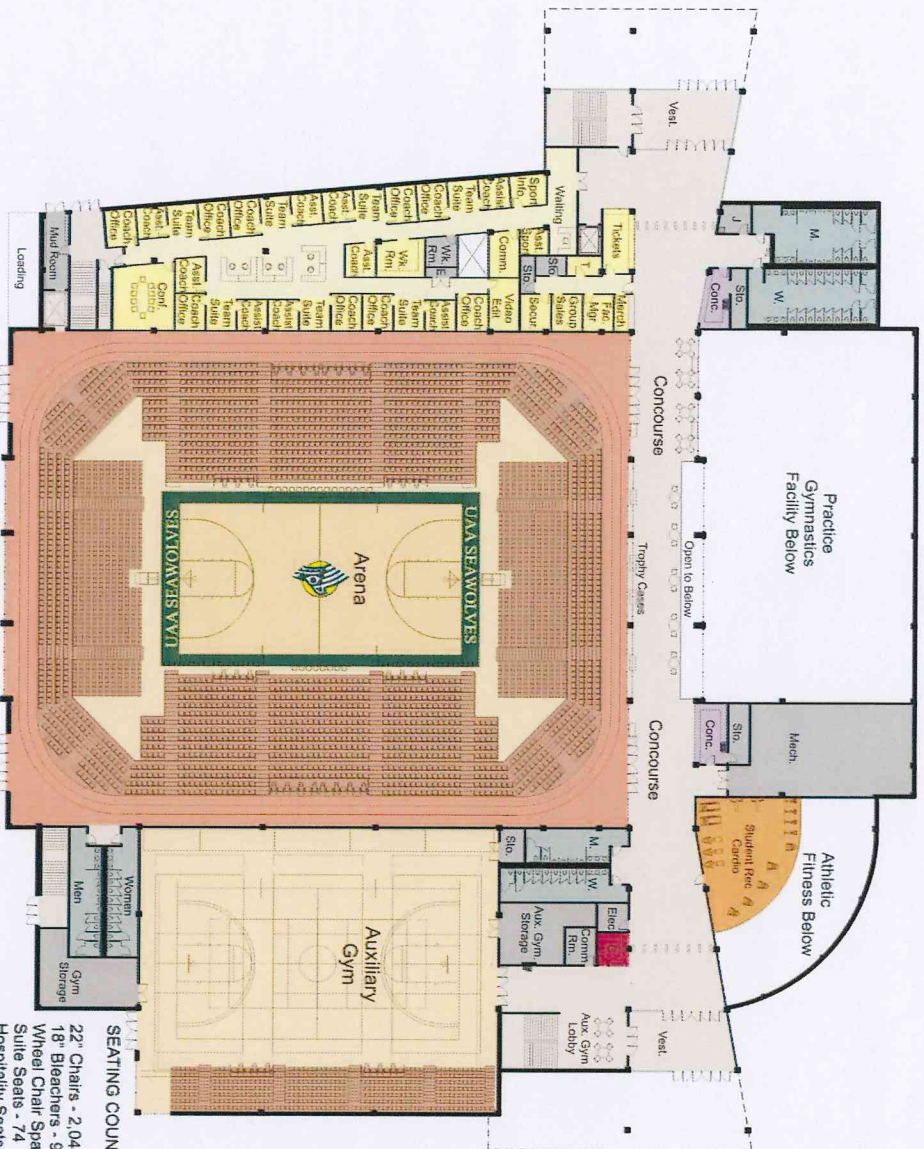


Lower Level  
New Sports Arena



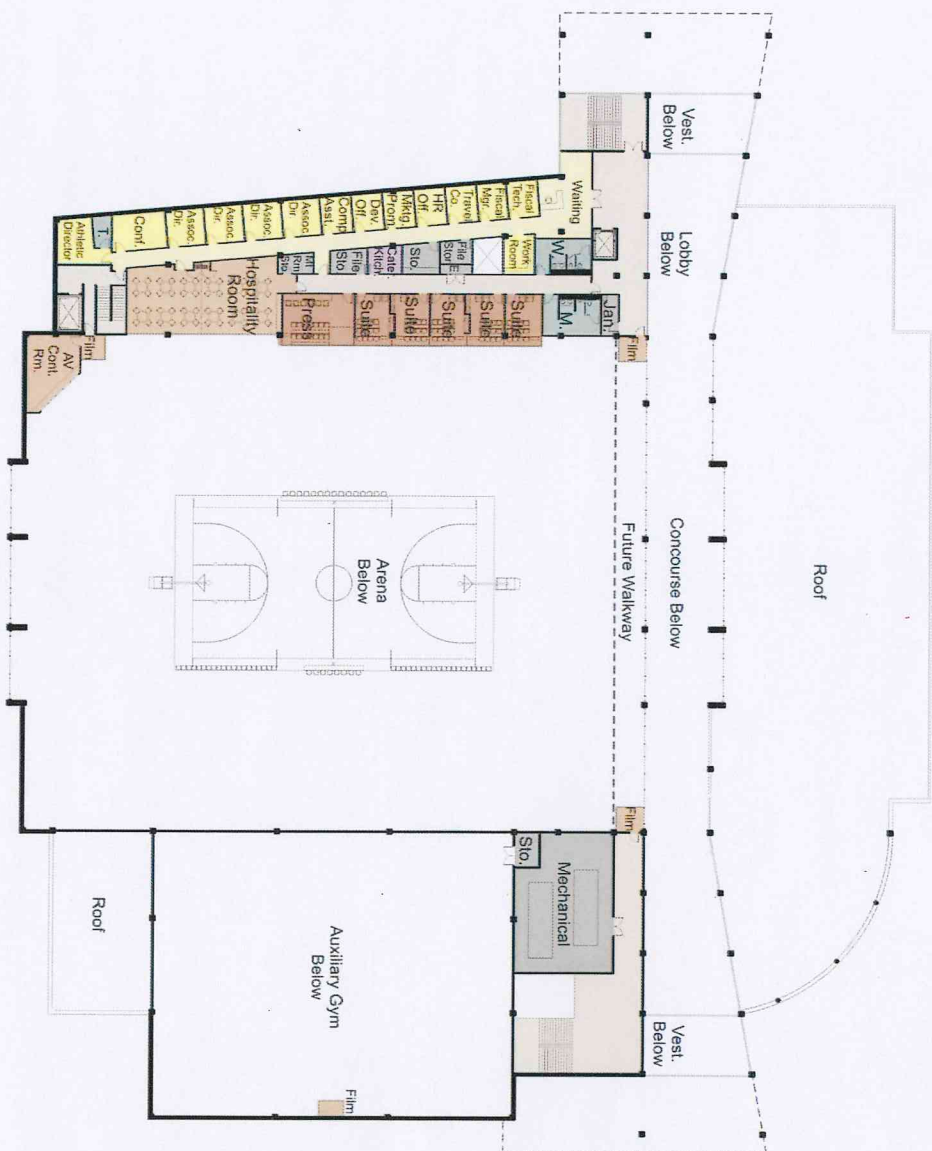


Entry Level  
New Sports Arena

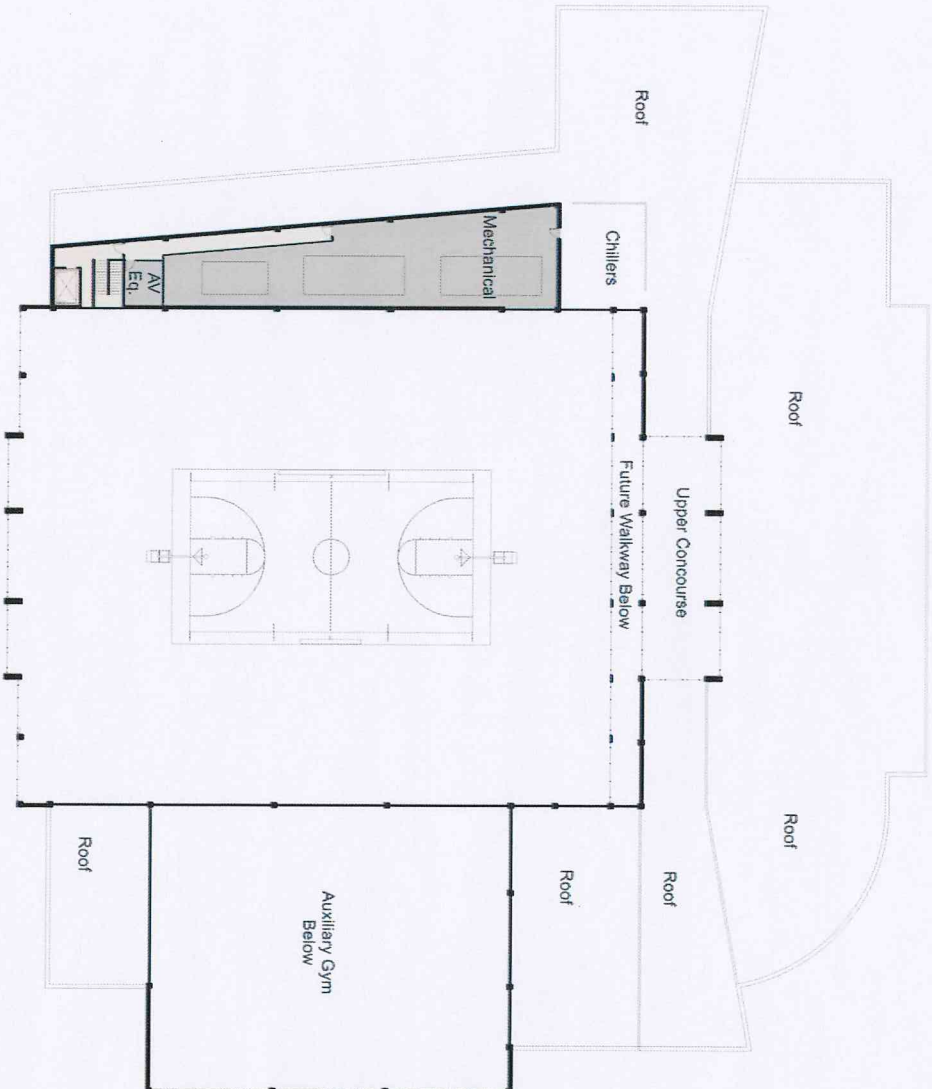


SEATING COUNTS:

- 22" Chairs - 2,044
- 18" Bleachers - 996
- Wheel Chair Spaces - 28
- Suite Seats - 74
- Hospitality Seats - 48
- Sub Total - 3,190
- Auxiliary Gymnasium Seating - 395
- Total - 3,585



Upper Mechanical Level
   
*New Sports Arena*





Building Sections  
*New Sports Arena*

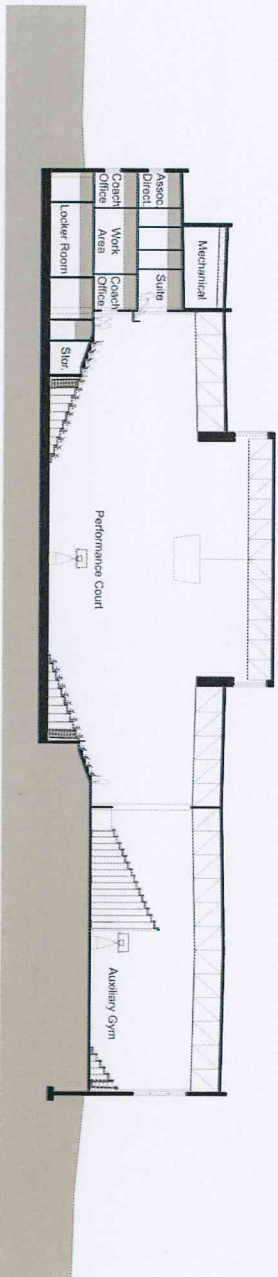


McCool Carlson Green

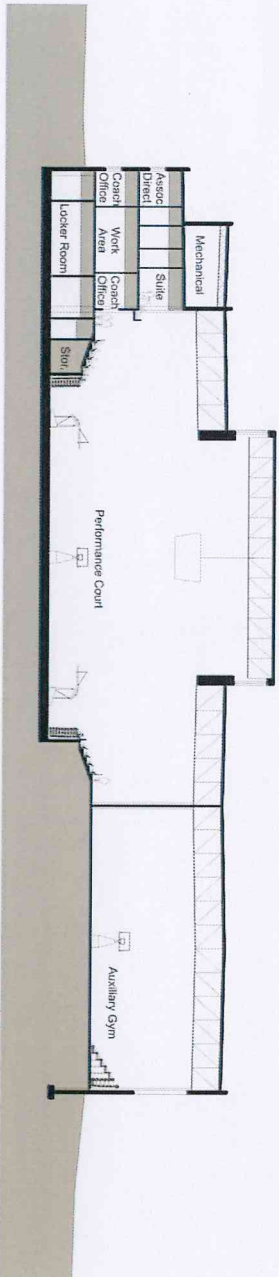
**Hastings+Chivetta**  
 ARCHITECTS • PLANNERS • INTERIOR DESIGNERS

September 17, 2009

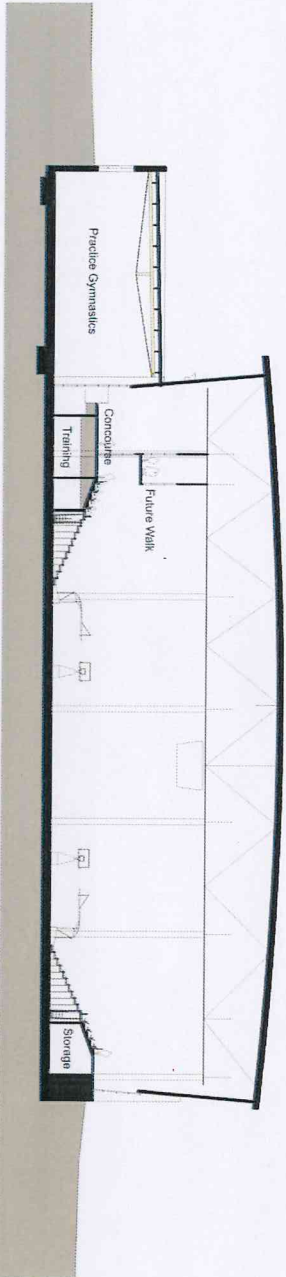
Section A-1



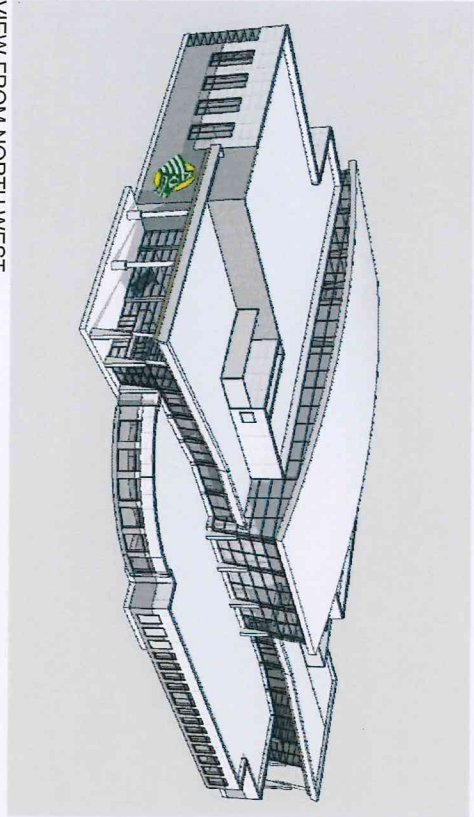
Section A



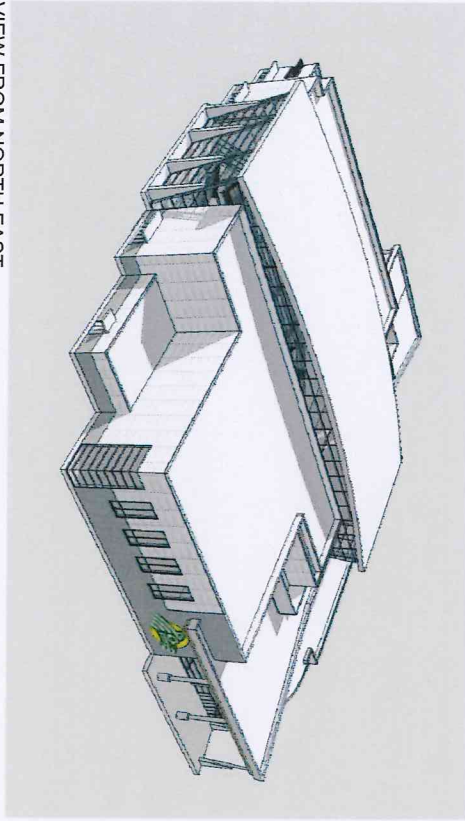
Section B



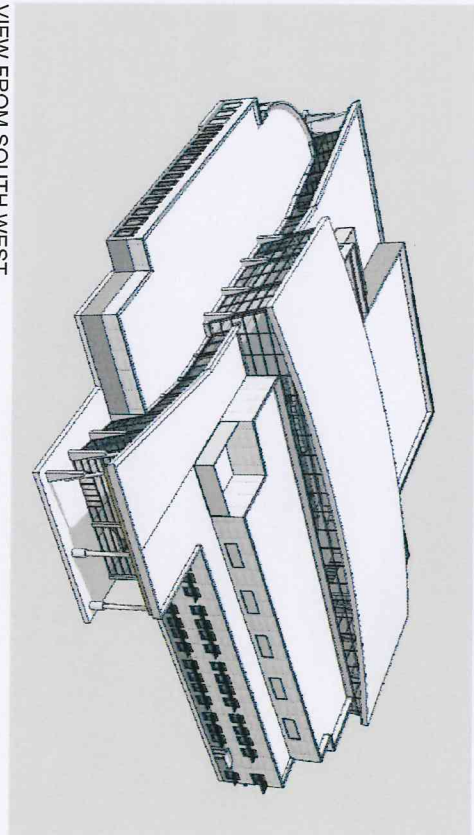
VIEW FROM NORTH WEST



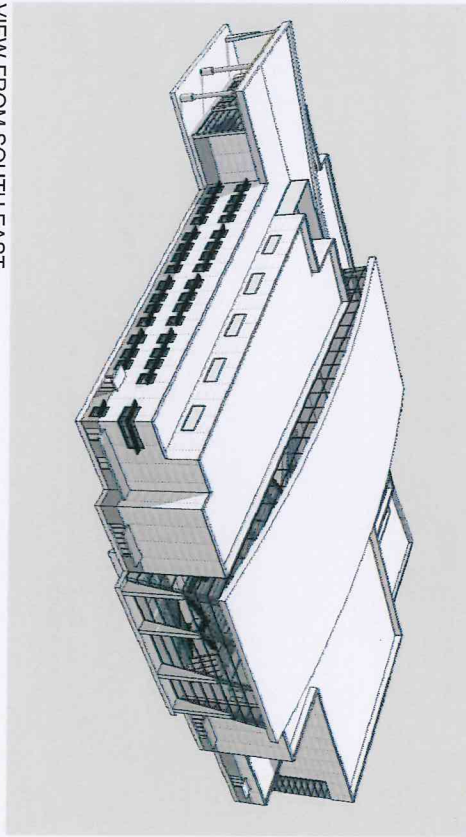
VIEW FROM NORTH EAST



VIEW FROM SOUTH WEST



VIEW FROM SOUTH EAST



SCHEMATIC DESIGN SUBMITTAL

PROJ. NO.	2008024
DATE	09-17-09
REVISIONS:	
SHEET NAME:	
BUILDING	
AREAL VIEWS	
A400	

UNIVERSITY of ALASKA ANCHORAGE  
NEW SPORTS ARENA  
Anchorage, AK 99508

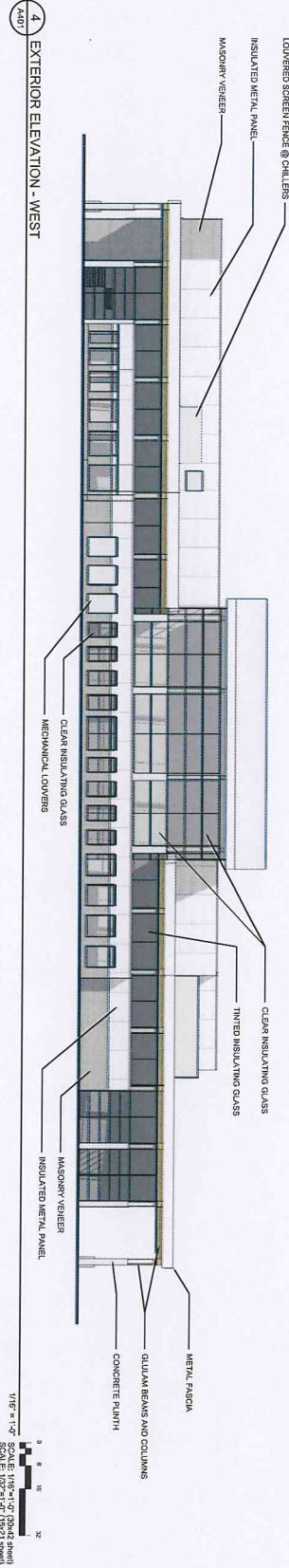
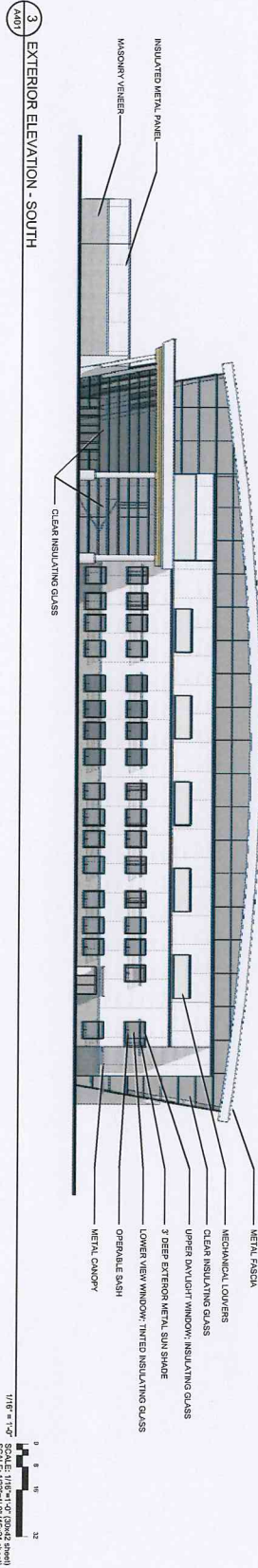
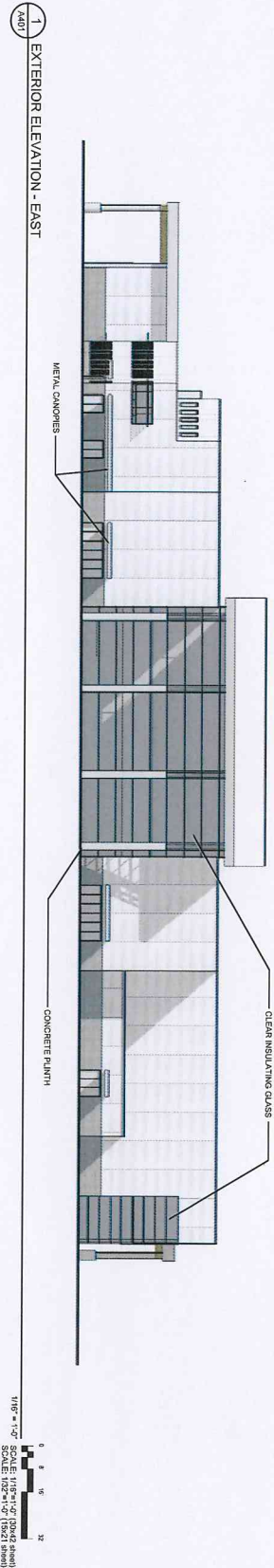


Hastings+Chivetta  
Hastings & Chivetta Architects, Inc.  
200 Calzadilla Park Dr., Ste. 400  
St. Louis, MO 63105



McCOOL CARLSON GREEN  
ARCHITECTURE INTERIOR DESIGN SPACE PLANNING  
901 W. 20TH AVENUE, ANCHORAGE, AK (907) 563-8474

NOT FOR  
CONSTRUCTION



SCHEMATIC DESIGN SUBMITTAL

A401

SHEET NAME  
EXTENSION  
ELEVATIONS

PROJ. NO. 2836.02  
DATE: 09-17-09  
REVISIONS:

UNIVERSITY of ALASKA ANCHORAGE

NEW SPORTS ARENA

Anchorage, AK 99508

Hastings+Chivetta

Hastings & Chivetta Architects, Inc.  
700 Corporate Park Dr., Ste. 400  
St. Louis, MO 63105



McCOOL CARLSON GREEN

ARCHITECTURE INTERIOR DESIGN SPACE PLANNING

601 W. 20TH AVENUE, ANCHORAGE, AK (907) 563-6474

NOT FOR  
CONSTRUCTION

# University of Alaska Anchorage -- New Sports Arena

## Schematic Design Building Program

Hastings+Chivetta Architects, Inc./ McCool Carlson Green

Date:

September 17, 2009

Revised:

Component	Conceptual Design February 11, 2009			Schematic Design September 17, 2009			Difference
	No. of Units	Area SF	Total NASF	No. of Units	Area SF	Total NASF	
<b>1.00 Public Spaces</b>							
1.01 Vestibule	2 vest	400 SF	800 SF	2 vest	664 SF	1,328 SF	528 SF
1.02 Lobby / Concourse	1 area	3,000 SF	3,000 SF	1 area	6,311 SF	6,311 SF	3,311 SF
1.03 Control Desk (Ticket Sales)	1 area	200 SF	200 SF	2 area	312 SF	312 SF	112 SF
1.04 Operations Office (See 6.00)	0 room	120 SF	0 SF	0 room	120 SF	0 SF	0 SF
1.05 Vending Area	2 areas	100 SF	200 SF	2 areas	180 SF	180 SF	-20 SF
1.06 Ticket Office (See 6.00)	0 rooms	500 SF	0 SF	0 rooms	500 SF	0 SF	0 SF
1.07 Men's Restroom	2 rooms	400 SF	800 SF	3 rooms	1,425 SF	1,425 SF	625 SF
1.08 Women's Restroom	2 rooms	450 SF	900 SF	3 rooms	1,604 SF	1,604 SF	704 SF
1.09 Juice / Snack Bar (Secondary Concessions)	1 area	250 SF	250 SF	2 areas	370 SF	370 SF	120 SF
1.10 Juice / Snack Bar Storage	1 room	100 SF	100 SF	2 areas	230 SF	230 SF	130 SF
1.11 Merchandise Sales Area	1 area	300 SF	300 SF	1 area	70 SF	70 SF	-230 SF
1.12 Merchandise Storage Area	1 room	120 SF	120 SF	0 room	0 SF	0 SF	-120 SF
1.13 Student Recreation/Cardio Area	1 area	1,750 SF	1,750 SF	1 area	1,224 SF	1,224 SF	-526 SF
<b>Public Spaces Total</b>			<b>8,420 SF</b>			<b>13,054 SF</b>	<b>4,634 SF</b>
<b>2.00 Team Meeting Rooms</b>							
2.01 Meeting Room (48 seats, divisible into 2 rooms)(Hospitality)	1 room	1,750 SF	1,750 SF	1 room	1,223 SF	1,223 SF	-527 SF
2.02 Student Meeting Storage Rooms	2 rooms	80 SF	160 SF	2 room	73 SF	73 SF	-87 SF
<b>Team Meeting Rooms Total</b>			<b>1,910 SF</b>			<b>1,296 SF</b>	<b>-614 SF</b>
<b>3.00 Performance Gymnasium Private Suites</b>							
3.01 Large Arena Suites (20 person)	0 rooms	400 SF	0 SF	0 rooms	0 SF	0 SF	0 SF
3.02 Small Arena Suites (12 person)	5 rooms	190 SF	950 SF	5 rooms	203 SF	1,015 SF	65 SF
3.03 Hospitality Suite Storage	1 rooms	120 SF	120 SF	1 room	94 SF	94 SF	-26 SF
3.04 Hospitality Suite Catering Kitchen	1 rooms	200 SF	200 SF	1 room	99 SF	99 SF	-101 SF
3.05 Hospitality Suite Toilets	2 rooms	200 SF	400 SF	2 rooms	419 SF	419 SF	19 SF
<b>Private Suites Total</b>			<b>1,670 SF</b>			<b>1,627 SF</b>	<b>-43 SF</b>
<b>4.00 Athletic User Support</b>							
4.01 Women's Varsity Gymnastics Locker Room (20)	1 rooms	760 SF	760 SF	1 rooms	800 SF	800 SF	40 SF
4.02 Women's Varsity Volleyball Locker Room (20)	1 rooms	760 SF	760 SF	1 rooms	861 SF	800 SF	40 SF
4.03 Women's Varsity Track & Field/CC Locker Room (25)	1 rooms	760 SF	760 SF	1 rooms	800 SF	857 SF	97 SF
4.04 Women's Varsity Future Team Locker Room (25)	2 rooms	760 SF	1,520 SF	0 rooms	760 SF	0 SF	-1,520 SF
4.05 Women's Varsity Locker Room Toilet & Showers	0 rooms	800 SF	0 SF	0 rooms	800 SF	0 SF	0 SF
4.05 Women's Varsity Skiing Locker Room (15)	1 rooms	760 SF	760 SF	1 rooms	800 SF	800 SF	40 SF
4.06 Men's Varsity Skiing Locker Room (15)	1 rooms	760 SF	760 SF	1 rooms	800 SF	800 SF	40 SF
4.07 Men's Varsity Track & Field/CC Locker Room (25)	1 rooms	760 SF	760 SF	1 rooms	800 SF	831 SF	71 SF
4.08 Men's Varsity Future Team Locker Room (25)	2 rooms	760 SF	1,520 SF	0 rooms	760 SF	0 SF	-1,520 SF
4.09 Men's Varsity Locker Room Toilet & Showers	0 rooms	800 SF	0 SF	0 rooms	800 SF	0 SF	0 SF
4.10 Women's Varsity Basketball Locker Room (20)	1 rooms	760 SF	760 SF	1 rooms	800 SF	800 SF	40 SF
4.11 Men's Varsity Basketball Locker Room (20)	1 rooms	760 SF	760 SF	1 rooms	800 SF	800 SF	40 SF
4.12 Official's Locker Rooms	2 rooms	175 SF	350 SF	2 rooms	182 SF	364 SF	14 SF
4.12a Official's Meeting Room	1 room	110 SF	110 SF	1 room	130 SF	130 SF	20 SF
4.13 Women's Coach's' Locker Rooms	1 rooms	300 SF	300 SF	1 rooms	426 SF	426 SF	126 SF
4.14 Men's Coach's' Locker Rooms	1 rooms	400 SF	400 SF	1 rooms	513 SF	513 SF	113 SF
4.15 Visitor's Locker Rooms	2 rooms	500 SF	1,000 SF	2 rooms	1,510 SF	1,510 SF	510 SF
4.16 Equipment Issue	1 rooms	150 SF	150 SF	1 rooms	2,197 SF	2,197 SF	2,047 SF
4.17 Equipment Manager Office (See 4.16)	1 rooms	120 SF	120 SF	1 rooms	0 SF	0 SF	-120 SF
4.18 Equipment Storage (See 4.16)	1 rooms	1,500 SF	1,500 SF	1 rooms	0 SF	0 SF	-1,500 SF
4.19 Skiing Team Equipment Storage	1 rooms	750 SF	750 SF	1 rooms	1,252 SF	1,252 SF	502 SF
4.20 Equipment Laundry (See 4.16)	1 rooms	500 SF	500 SF	1 rooms	0 SF	0 SF	-500 SF
4.21 Event/Catering Kitchen (Non Party Suite Events)	1 rooms	175 SF	175 SF	0 rooms	0 SF	0 SF	-175 SF
4.22 Community/Recreation/Staff Locker Rooms	2 rooms	400 SF	800 SF	2 rooms	598 SF	1,196 SF	396 SF
4.23 Cheerleader Locker Rooms (WV-350 SF/M-250 SF)	2 rooms	300 SF	600 SF	2 rooms	1,039 SF	1,039 SF	439 SF
<b>User Support Total</b>			<b>15,875 SF</b>			<b>15,115 SF</b>	<b>-760 SF</b>

# University of Alaska Anchorage -- New Sports Arena

## Schematic Design Building Program

Hastings+Chivetta Architects, Inc./ McCool Carlson Green

Date:

September 17, 2009

Revised:

Component	Conceptual Design February 11, 2009			Schematic Design September 17, 2009			Difference
	No. of Units	Area SF	Total NASF	No. of Units	Area SF	Total NASF	
<b>5.00 Venue Administration</b>							
5.01 Ticket Sales Area (See 1.03)	2 area	150 SF	300 SF	0 area	0 SF		-300 SF
5.02 Money Handling (Counting) Room	1 room	64 SF	64 SF	1 room	73 SF		9 SF
5.03 Reception (See 11.00)	0 room	250 SF	0 SF	0 room	0 SF		0 SF
5.04 Administrative Assistant	0 room	100 SF	0 SF	0 room	0 SF		0 SF
5.05 Facility Manager	1 room	120 SF	120 SF	1 room	120 SF		0 SF
5.06 Group Sales Office (Ticket Sales)	1 room	120 SF	120 SF	1 room	120 SF		0 SF
5.07 Security Office	1 room	120 SF	120 SF	1 room	120 SF		0 SF
5.08 Conference Room (Utilize Areas in 11.00)	0 room	300 SF	0 SF	0 room	0 SF		0 SF
5.09 Marketing Production Room (Utilize Areas in 11.00)	0 room	200 SF	0 SF	0 room	0 SF		0 SF
5.10 Work Room (Utilize Areas in 11.00)	0 room	150 SF	0 SF	0 room	0 SF		0 SF
5.11 Break Room (Utilize Areas in 11.00)	0 room	150 SF	0 SF	0 room	0 SF		0 SF
5.12 Storage Room	1 room	64 SF	64 SF	2 rooms	119 SF		55 SF
5.13 Press Room (Located by Private Suites)	1 room	190 SF	190 SF	1 room	400 SF		210 SF
5.14 Suite Circulation	25% area	245 SF		25% area	238 SF		-7 SF
<b>Venue Administration Total</b>			<b>1,223 SF</b>			<b>1,190 SF</b>	<b>-33 SF</b>
<b>6.00 Performance Gymnasium</b>							
6.01 Performance Gymnasium (Main Gym Floor Area)	1 room	29,500 SF	29,500 SF	1 room	21,129 SF		-8,371 SF
6.02 Performance Gymnasium Fixed / Telescoping Seating	3,500 seats	Chair-Back Style		3,068 seats	Combo Chair-Back & Bench		
6.03 Performance Gymnasium Storage (Team and General)	1 room	2,500 SF	2,500 SF	7 room	2,473 SF		-27 SF
6.04 Performance Gymnasium Concourse and Fixed Seating	1 room	6,400 SF	6,400 SF	5 rooms	14,656 SF		8,256 SF
6.05 Performance Gymnasium Lobby (See 1.02)	1 room	4,000 SF	4,000 SF	0 room	0 SF		-4,000 SF
6.06 Performance Gymnasium Concessions (See 1.09)	2 room	225 SF	450 SF	0 room	0 SF		-450 SF
6.07 Performance Gym Concessions Stor. (Includes Count Rm.)	2 room	100 SF	200 SF	0 room	0 SF		-200 SF
6.08 Hall of Fame (See 2.01)	0 room	1,000 SF	0 SF	0 room	0 SF		0 SF
6.09 Hall of Fame Storage (See 2.02)	0 room	120 SF	0 SF	0 room	0 SF		0 SF
6.10 Hall of Fame Kitchen (See 4.21)	0 room	100 SF	0 SF	0 room	0 SF		0 SF
6.11 Hall of Fame Toilet (Utilize areas in 3.05)	1 room	60 SF	60 SF	0 room	0 SF		-60 SF
6.12 Performance Gymnasium AV Control and Production Room	1 room	200 SF	200 SF	1 room	677 SF		477 SF
<b>Performance Gymnasium Total</b>			<b>43,310 SF</b>			<b>38,935 SF</b>	<b>-4,375 SF</b>
<b>7.00 Gymnastics Facility</b>							
7.01 Floor Exercise & Apparatus Area	1 room	9,000 SF	9,000 SF	1 room	8,945 SF		-55 SF
7.02 Office	1 room	120 SF	120 SF	1 room	124 SF		4 SF
7.03 Storage	1 room	120 SF	120 SF	1 room	414 SF		294 SF
<b>Gymnastics Facility Total</b>			<b>9,240 SF</b>			<b>9,483 SF</b>	<b>243 SF</b>
<b>8.00 Auxiliary Gymnasium</b>							
8.01 Two Court Auxiliary Gym (One Court per 12/9/08 - 88'x118')	1 room	13,000 SF	13,000 SF	1 room	11,217 SF		-1,783 SF
8.02 Gym Storage	1 room	500 SF	500 SF	1 room	505 SF		5 SF
8.03 Observation Deck (400 Seats)	0 area	2,800 SF	0 SF	0 area	0 SF		0 SF
8.04 Gymnastics Event Storage	1 room	800 SF	800 SF	1 room	613 SF		-187 SF
<b>Auxiliary Gymnasium Total</b>			<b>14,300 SF</b>			<b>12,335 SF</b>	<b>-1,965 SF</b>
<b>9.00 Athletic Fitness</b>							
9.01 Cardiovascular Area	1 area	1,200 SF	1,200 SF	1 area	4,177 SF		2,977 SF
9.02 Strength Area (See 9.01)	1 area	1,200 SF	1,200 SF	1 area	0 SF		-1,200 SF
9.03 Free Weight Area (See 9.01)	1 area	1,800 SF	1,800 SF	1 area	0 SF		-1,800 SF
9.04 Fitness Control Desk (See 9.01)	1 area	120 SF	120 SF	1 area	0 SF		-120 SF
9.05 Strength Coach's Office	1 office	120 SF	120 SF	1 office	124 SF		4 SF
9.06 Fitness Storage	1 area	300 SF	300 SF	1 area	307 SF		7 SF
<b>Fitness Total</b>			<b>4,740 SF</b>			<b>4,608 SF</b>	<b>-132 SF</b>

# University of Alaska Anchorage -- New Sports Arena

## Schematic Design Building Program

Hastings+Chivetta Architects, Inc./ McCool Carlson Green

Date: September 17, 2009

Revised:

Component	Conceptual Design February 11, 2009			Schematic Design September 17, 2009			Difference
	No. of Units	Area SF	Total NASF	No. of Units	Area SF	Total NASF	
<b>10.00 Training Room</b>							
10.01 Taping Area	1 area	200 SF	200 SF	1 area	976 SF		776 SF
10.02 Hydro-Therapy / Cold Plunge Tank	1 room	200 SF	200 SF	1 room	359 SF		159 SF
10.03 Treatment Area (See 10.01)	1 area	220 SF	220 SF	1 area	0 SF		-220 SF
10.04 Rehab Area (See 10.01)	1 area	350 SF	350 SF	1 area	0 SF		-350 SF
10.05 Trainer's Office	1 office	120 SF	120 SF	1 office	167 SF		47 SF
10.06 Assistant Trainer's Office	3 offices	100 SF	300 SF	3 offices	100 SF	300 SF	0 SF
10.07 Exam Room	1 room	100 SF	100 SF	1 room	117 SF		17 SF
10.08 Cooler Room	1 room	115 SF	115 SF	1 room	120 SF		5 SF
10.09 Storage Room	1 room	115 SF	115 SF	1 room	117 SF		2 SF
10.10 Toilet Room	1 room	60 SF	60 SF	1 room	44 SF		-16 SF
10.11 Cold Plunge Tank (See 10.02)	1 room	350 SF	350 SF	0 room	0 SF		-350 SF
10.12 Public First Aid Room	1 room	120 SF	120 SF	1 room	84 SF		-36 SF
<b>Training Room Total</b>			<b>2,250 SF</b>			<b>2,284 SF</b>	<b>34 SF</b>
<b>11.00 Athletic Administration</b>							
11.01 Reception Area / Waiting	1 area	225 SF	225 SF	2 areas	978 SF		753 SF
11.02 Director's Office (Includes Private Toilet/Shower)	1 office	275 SF	275 SF	1 office	273 SF		-2 SF
11.03 Associate Director (Compliance/Internal/External/Facilities)	4 offices	150 SF	600 SF	4 offices	150 SF	600 SF	0 SF
11.04 Administrative Assistant (See 11.01)	2 areas	100 SF	200 SF	2 areas	0 SF		-200 SF
11.05 Coach's Offices	14 offices	120 SF	1,680 SF	9 offices	120 SF	1,080 SF	-600 SF
11.06 Assistant Coach's Offices	14 offices	100 SF	1,400 SF	9 offices	100 SF	900 SF	-500 SF
11.07 Sports Information Office	1 office	120 SF	120 SF	1 office	120 SF		0 SF
11.07a Assistant Sports Information Office	1 office	100 SF	100 SF	1 office	80 SF		-20 SF
11.08 Part Time Assistant Coach's Office	14 offices	64 SF	896 SF	9 offices	cubicles	576 SF	-320 SF
11.09 Large Conference Room	1 room	400 SF	400 SF	1 room	436 SF		36 SF
11.10 Small Conference Room	1 room	250 SF	250 SF	1 room	212 SF		-38 SF
11.11 Video Editing	1 room	180 SF	180 SF	1 room	171 SF		-9 SF
11.12 Student Employee Work Stations	4 areas	64 SF	256 SF	4 cubbies	192 SF		-64 SF
11.13 Marketing Promotion Room	1 room	200 SF	200 SF	1 room	119 SF		-81 SF
11.14 Work Room	1 room	200 SF	200 SF	2 rooms	318 SF		118 SF
11.15 Break Room (Combine with 11.09)	1 room	200 SF	200 SF	0 room	0 SF		-200 SF
11.16 Storage Room	2 rooms	100 SF	200 SF	1 room	100 SF		-100 SF
11.17 Suite Toilet Room (See 3.05)	2 rooms	60 SF	120 SF	0 rooms	0 SF		-120 SF
11.18 Secure File Storage	1 room	150 SF	150 SF	1 room	103 SF		-47 SF
11.19 Fiscal Manager Office	1 office	120 SF	120 SF	1 office	119 SF		-1 SF
11.19a Assistant Fiscal Manager Office	1 office	100 SF	100 SF	1 office	100 SF		0 SF
11.20 Development Office	1 office	120 SF	120 SF	1 office	119 SF		-1 SF
11.21 HR Office	1 office	120 SF	120 SF	1 office	119 SF		-1 SF
11.22 Suite Circulation	25%		2,028 SF	25%		1,679 SF	-349 SF
<b>Athletic Administration Total</b>			<b>10,140 SF</b>			<b>8,394 SF</b>	<b>-1,746 SF</b>
<b>12.00 Academic Support Facilities</b>							
12.01 Reception Area / Waiting	1 area	150 SF	150 SF	0 area	150 SF	0 SF	-150 SF
12.02 Director's Office (Located in Athletic Office Area)	0 office	180 SF	0 SF	0 office	180 SF	0 SF	0 SF
12.03 Associate Director	1 offices	120 SF	120 SF	0 offices	120 SF	0 SF	-120 SF
12.04 Administrative Assistant	2 cubicle	80 SF	160 SF	0 cubicle	80 SF	0 SF	-160 SF
12.05 Conference Room	1 room	250 SF	250 SF	0 room	250 SF	0 SF	-250 SF
12.06 Computer Lab	0 room	500 SF	0 SF	0 room	500 SF	0 SF	0 SF
12.07 Tutor Rooms	3 rooms	80 SF	240 SF	0 rooms	80 SF	0 SF	-240 SF
12.08 Open Study Area (With Computer Stations)	1 area	600 SF	600 SF	0 area	600 SF	0 SF	-600 SF
12.09 Storage Room	1 room	80 SF	80 SF	0 room	80 SF	0 SF	-80 SF
12.10 Suite Circulation	25%		400 SF	25%		0 SF	-400 SF
<b>Academic Support Facilities Total</b>			<b>2,000 SF</b>			<b>0 SF</b>	<b>-2,000 SF</b>

# University of Alaska Anchorage -- New Sports Arena

## Schematic Design Building Program

Hastings+Chivetta Architects, Inc./ McCool Carlson Green

Date: September 17, 2009

Revised:

Component	Conceptual Design February 11, 2009			Schematic Design September 17, 2009			Difference
	No. of Units	Area SF	Total NASF	No. of Units	Area SF	Total NASF	
<b>13.00 Athletic Building Support</b>							
13.01 Mechanical	4 rooms	2,500 SF	10,000 SF	4 rooms	8,872 SF		-1,128 SF
13.02 Main Electrical Room	1 room	400 SF	400 SF	1 room	392 SF		-8 SF
13.03 Main Server Room	1 room	120 SF	120 SF	1 room	120 SF		0 SF
13.04 Remote Server Rooms	3 rooms	100 SF	300 SF	3 rooms	80 SF	240 SF	-60 SF
13.05 Custodial Closets	4 rooms	80 SF	320 SF	4 rooms	80 SF	320 SF	0 SF
13.06 Building Maintenance Office	1 office	120 SF	120 SF	1 office	120 SF		0 SF
13.07 Building Maintenance Storage	1 room	200 SF	200 SF	1 room	317 SF		117 SF
13.08 Receiving/Loading Dock	1 area	225 SF	225 SF	1 area	200 SF		-25 SF
13.09 Recycling Area	1 area	120 SF	120 SF	2 areas	35 SF	70 SF	-50 SF
13.10 Custodial Storage (See 13.07)	1 area	200 SF	200 SF	0 area	0 SF		-200 SF
13.11 Elevator	1 elev	80 SF	80 SF	2 elev		170 SF	90 SF
13.12 Elevator Machine	1 room	80 SF	80 SF	2 room	64 SF	128 SF	48 SF
13.13 Fire Control Center	1 room	120 SF	120 SF	1 room	95 SF		-25 SF
<b>Athletic Building Support Total</b>			<b>12,285 SF</b>			<b>11,044 SF</b>	<b>-1,241 SF</b>
<b>Net Building Area (NASF)</b>	84%		<b>127,363 SF</b>	81%		<b>119,365 SF</b>	<b>-7,998 SF</b>
<b>Circulation and Walls</b>	16%		<b>24,638 SF</b>	19%		<b>28,885 SF</b>	<b>4,248 SF</b>
<b>Gross Building Area</b>	100% (+/-)		<b>152,000 SF</b>	100% (+/-)		<b>148,250 SF</b>	<b>-3,750 SF</b>

	Program Revisions February 11, 2009		Program Revisions September 17, 2009		Difference
<b>1.00 Public Spaces</b>		<b>8,420 SF</b>		<b>13,054 SF</b>	<b>4,634 SF</b>
<b>2.00 Team Meeting Rooms</b>		<b>1,910 SF</b>		<b>1,296 SF</b>	<b>-614 SF</b>
<b>3.00 Performance Gymnasium Private Suites</b>		<b>1,670 SF</b>		<b>1,627 SF</b>	<b>-43 SF</b>
<b>4.00 Athletic User Support</b>		<b>15,875 SF</b>		<b>15,115 SF</b>	<b>-760 SF</b>
<b>5.00 Venue Administration</b>		<b>1,223 SF</b>		<b>1,190 SF</b>	<b>-33 SF</b>
<b>6.00 Performance Gymnasium</b>		<b>43,310 SF</b>		<b>38,935 SF</b>	<b>-4,375 SF</b>
<b>7.00 Gymnastics Facility</b>		<b>9,240 SF</b>		<b>9,483 SF</b>	<b>243 SF</b>
<b>8.00 Auxiliary Gymnasium</b>		<b>14,300 SF</b>		<b>12,335 SF</b>	<b>-1,965 SF</b>
<b>9.00 Athletic Fitness</b>		<b>4,740 SF</b>		<b>4,608 SF</b>	<b>-132 SF</b>
<b>10.00 Training Room</b>		<b>2,250 SF</b>		<b>2,284 SF</b>	<b>34 SF</b>
<b>11.00 Athletic Administration</b>		<b>10,140 SF</b>		<b>8,394 SF</b>	<b>-1,746 SF</b>
<b>12.00 Academic Support Facilities</b>		<b>2,000 SF</b>		<b>0 SF</b>	<b>-2,000 SF</b>
<b>13.00 Athletic Building Support</b>		<b>12,285 SF</b>		<b>11,044 SF</b>	<b>-1,241 SF</b>
<b>Net Building Area (NASF)</b>	84%	<b>127,363 SF</b>	81%	<b>119,365 SF</b>	<b>-7,998 SF</b>
<b>Circulation and Walls</b>	16%	<b>24,638 SF</b>	19%	<b>28,885 SF</b>	<b>4,248 SF</b>
<b>Gross Building Area</b>	100%	<b>152,000 SF</b>	100%	<b>148,250 SF</b>	<b>-3,750 SF</b>